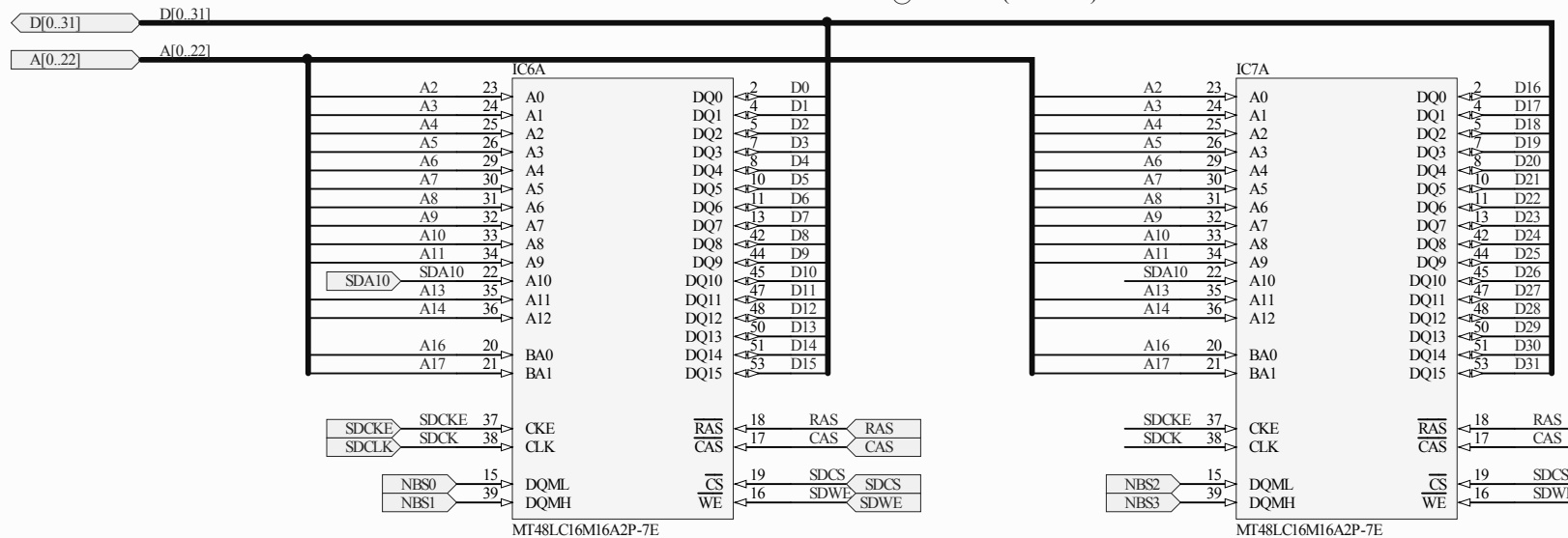
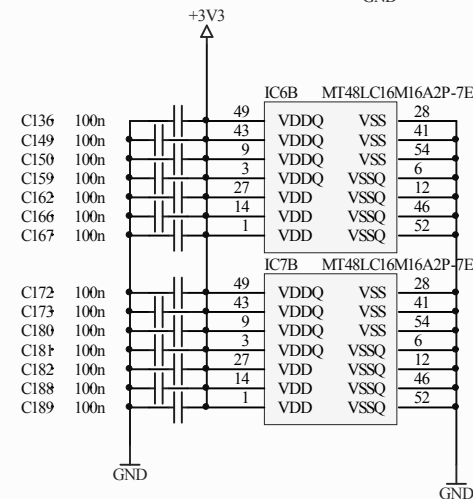
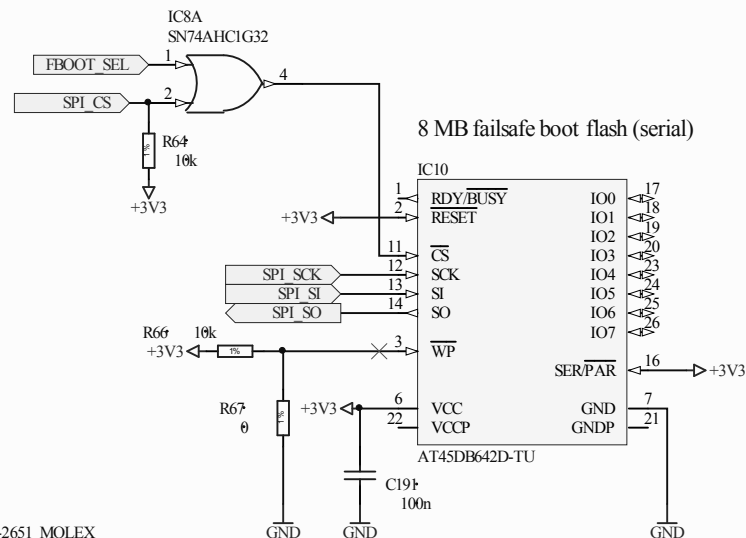
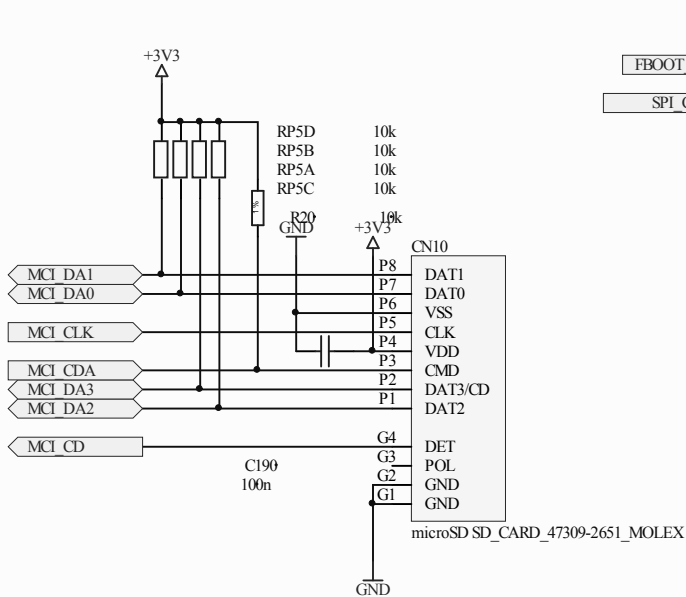
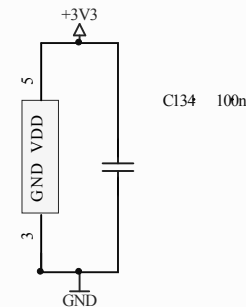


64 MB SDRAM @ 133 MHz (32 bit bus)



CPU memories:

- 64 MB SDRAM @ 133 MHz (32-bit)
- 256 MB main NAND flash
- 8 MB boot NAND flash



Project: White Rabbit Switch MCH - mainboard

Sheet: ARM9 CPU SDRAM and flash memories

Version: 1.1.0

Date: 2009/11/12

Author: Tomasz Wlostowski

License: Open Hardware License (OHL)

Company: CERN BE-CO-HT