

WRS-3/18 - Startup Guide

04 oct. 2014 - v4.1

Benoit Rat, Rodrigo Agis (Seven Solutions)

Contents

1	Introduction	6
1.1	About this Guide	6
1.2	The Official Manuals	6
2	Product Overview	7
2.1	Package	7
2.2	Front panel v3.4 (Legend)	7
2.3	Front panel v3.3 (Legend)	8
2.4	Back panel (Legend)	8
3	Basics	10
3.1	Default Setting	10
3.2	Quick Startup	10
3.3	USB Connections	11
3.4	Login via USB	11
3.5	Login via SSH	11
3.6	Login using Windows	12
3.7	Login using the Web Management Interface (WMI)	12
3.8	Web Management Interface Features:	14
3.9	Console tools:	15
4	Configurations	16
4.1	Booting	16
4.2	Non-DHCP user	16
4.3	GrandMaster mode	16
4.4	Firmware updates	17
4.5	Advanced configuration	17
5	Safety Notes	18
6	Appendix	19
6.1	Specification	19
6.2	Features	20
6.3	Warranty	20
6.4	FAQs & Troubleshooting	20

6.5 Contact-Us	21
6.6 Save Our Environment	21
7 References	22

Copyright

This document is copyrighted (under the Berne Convention) by Seven Solutions company and is formally licensed to the public under **GPL v2.0** license. Report content can be copied, modified, and redistributed.

The Seven Solutions Logo can not be modified in any form, or by any means without prior written permission by Seven Solutions.

Licenses

The "Startup Guide" (as defined below) is provided under the terms of GPL v2.0
Copyright (C) 2014 - Seven Solutions

This program is free software; you can redistribute it and/or modify it under the terms of the GNU General Public License as published by the Free Software Foundation; either version 2 of the License, or (at your option) any later version.

This program is distributed in the hope that it will be useful, but WITHOUT ANY WARRANTY; without even the implied warranty of MERCHANTABILITY or FITNESS FOR A PARTICULAR PURPOSE. See the GNU General Public License for more details.

You should have received a copy of the GNU General Public License along with this program; if not, write to the Free Software Foundation, Inc., 51 Franklin Street, Fifth Floor, Boston, MA 02110-1301, USA.

The [WRS](#) has been released under the **CERN OHL** licence.

Copyright CERN 2011.

This documentation describes Open Hardware and is licensed under the CERN OHL v. 1.2.

You may redistribute and modify this documentation under the terms of the CERN OHL v.1.2. (<http://ohwr.org/cernohl>). This documentation is distributed WITHOUT ANY EXPRESS OR IMPLIED WARRANTY, INCLUDING OF MERCHANTABILITY, SATISFACTORY QUALITY AND FITNESS FOR A PARTICULAR PURPOSE. Please see the CERN OHL v.1.2 for applicable conditions

Revision table

Rev	Date	Author	Comments
0.1	18/02/2013	Benoit Rat Seven Solutions	Initial Version Reviewer: Rodrigo Agis (7S)
0.2	26/03/2013	Benoit Rat Seven Solutions	Adding suggestion from Beck, Dietrich Dr (GSI)
0.3	27/03/2013	Benoit Rat Seven Solutions	Modifying licence to GPL v2.0 to be comptabile with the package
0.4	23/05/2013	Benoit Rat Seven Solutions	Updating 125MHz out to CLK
0.5	26/07/2013	Benoit Rat Seven Solutions	Adding suggestion from Erik Van Der Bij (CERN)
1.0	26/07/2013	Benoit Rat Seven Solutions	Updating for v3.3 release
1.1	26/07/2014	Jose Luis Gutierrez Seven Solutions	Adding WMI for v4.0 release
1.2	02/10/2014	Benoit Rat Seven Solutions	Updating for v4.1 release

Glossary

DHCP The Dynamic Host Configuration Protocol to obtain network configuration.

FMC FPGA Mezzanine Card, an ANSI standard for mezzanine card form factor.

HDL Hardware description language.

LM32 LatticeMico32 is a 32-bit microprocessor soft core optimized for field-programmable gate arrays (FPGAs).

NAND NAND Flash Memory, a type of reprogrammable non-volatile computer memory.

PCIe Peripheral Component Interconnect Express, a high-speed serial computer expansion bus standard.

PTP Precise Time Protocol, a time synchronization protocol.

SMC SubMiniature version C, coaxial connector used in radio-frequency circuits.

SFP Small form-factor pluggable transceiver, a hot-pluggable transceiver for optical fiber.

SPEC Simple PCIe FMC carrier.

SVEC Simple VME FMC carrier.

UART Universal Asynchronous Receiver/Transmitter.

WR White Rabbit.

WRS White Rabbit Switch.

WMI Web Management Interface

1 Introduction

The White Rabbit Switch ([WRS](#)) is the key component of the White Rabbit Protocol that provides precision timing and high synchronization over an Ethernet-based network.

1.1 About this Guide

This document is intended as a **Startup Guide** for quickly setup your switch in a White Rabbit Network. For more details on advanced topics please refers to the [Advanced configuration section](#) or to the other manuals.

This document will refer only to [WRS](#) v3.3 and v3.4.

1.2 The Official Manuals

This is the current set of manuals that accompany the [WRS](#):

WRS Startup Guide: hardware installation instructions.

This manual is provided by the manufacturer. It describes handling measures, the external connectors, hardware features and the initial bring-up of the device.

WRS User's Manual: documentation about configuring the [WRS](#), at software level.

This guide is maintained by software developers. The manual describes configuration in a deployed network, either as a standalone device or as network-booted equipment. The guide also describes how to upgrade the switch, because we'll release new official firmware images over time, as new features are implemented.

WRS Developer's Manual: it describes the build procedure and how internals work.

The manual is by developers and for developers. This is the document to check if you need to customize your [WRS](#) rebuild software from new repository commits that are not an official release point, or just install your [WRS](#) with custom configuration values.

2 Product Overview

2.1 Package

The **WRS** package is composed of various elements:

- The packaging box
- A power cable according to the country of distribution.
- The 18 SFP ports switch.
- SFP LC connectors
 - 16x AXGE-3454-0531 (violet)
 - 2x AXGE-1254-0531 (blue)

Note: The SFP LC connectors are optional. Consult the [SFPs Wiki](#) for more information about the compatibility of SFPs and how to use them.

2.2 Front panel v3.4 (Legend)

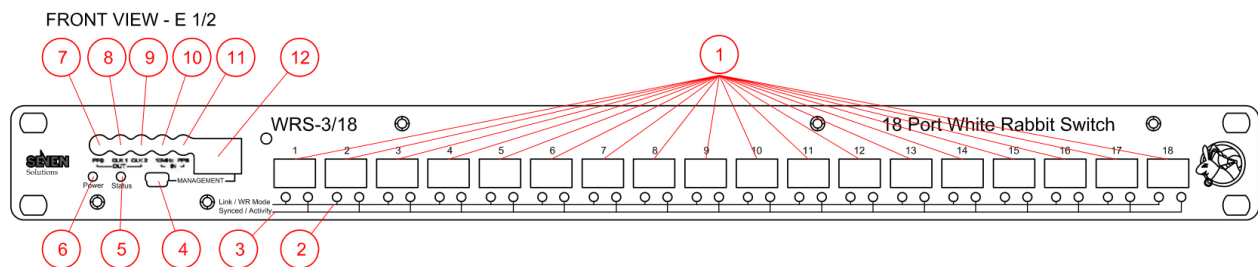


Figure 1: Front Panel of the WRS v3.4

1. The 18 SFP ports
2. Synced/Activity LEDs
3. Link/WR Mode LEDs
4. Management Mini-USB (B) port
5. Status LED
6. Power LED
7. PPS output
8. CLK1 output (10MHz from PLL)
9. CLK2 output (10MHz from FPGA)
10. 10MHz reference clock input (GPS/Cesium)
11. PPS in
12. Ethernet 100Mbps Management Port

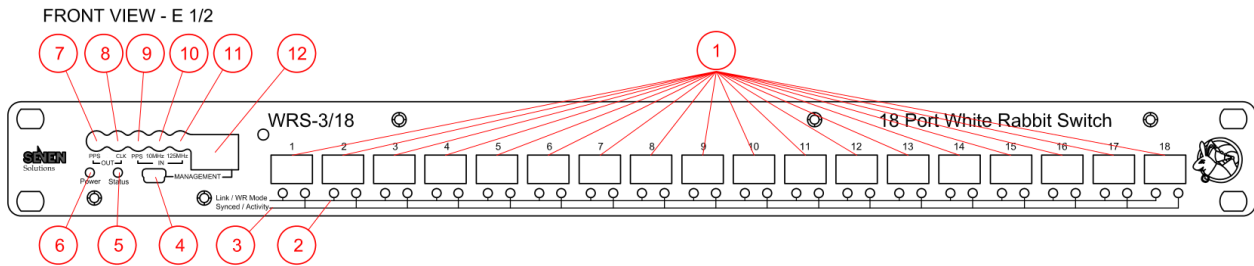


Figure 2: Front Panel of the WRS v3.3

2.3 Front panel v3.3 (Legend)

1. The 18 SFP ports
2. Synced/Activity LEDs
3. Link/WR Mode LEDs
4. Management Mini-USB (B) port
5. Status LED
6. Power LED
7. PPS output
8. Synced CLK reference Output (62.5 MHz)
9. PPS input (GPS Clock)
10. 10MHz reference clock input (GPS/Cesium)
11. 125MHz reference clock input (Not used)
12. Ethernet 100Mbps Management Port

2.4 Back panel (Legend)

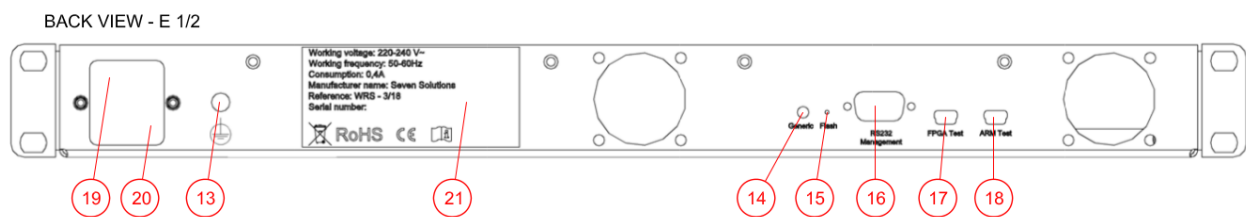


Figure 3: Back Panel of the WRS

13. Ground Connector
14. Generic Button
15. Flashing Button (See firmware update)
16. RS232 Management Port (GPRMC)
17. FPGA Mini-USB (B) UART

- 18. ARM Mini-USB (B) UART
- 19. Power Switch
- 20. Power Plug
- 21. Serial Number and MACs

3 Basics

3.1 Default Setting

The device is factory configured with the following default settings:

- IP configuration is **DHCP**
- MACs are given by the manufacturer; labeled on back panel [#21](#)
 - MAC1 corresponds to the management port (RJ45).
 - MAC2 corresponds to the first SFP port ($wr[0 - 17] \Leftrightarrow MAC2 + [0 - 17]$).
- WR mode is **BoundaryClock** (Simple Master)
 - The first two ports (SFPs 1 & 2) are configured as WR slave.
 - The other ports (SFPs [3-18]) are configured as WR master.
- SSH user: **root**
- SSH password: (empty/just press enter)
- Boot method: from Nandflash firmware
- Web Management Interface user: **admin**
- Web Management Interface password: (empty)

3.2 Quick Startup

To get the switch quickly working we recommend you to:

1. Plug the *Ethernet 100Mbps Management Port* of the switch to a DHCP network using RJ45 patch-cord.
2. Plug the power cable to the *Power Plug*.

After all connections have been made, toggle the power-switch on to turn the device on. After the power on, the [WRS](#) should behave as follows:

3. The *Power LED* goes green
4. After 15s, the *Status LED* goes orange which means that the [WRS](#)'s kernel has started.
5. Then the fan start working which means that FPGA has been correctly programmed.
6. Finally, it goes green when everything is succesful (PLL is locked).

You have now the [WRS](#) ready to be used in a WR network.

7. Connect the blue SFPs (AXGE-1254-0531) to the SFP port 1 and 2 of the [WRS](#). These SFPs are the ones that will receive synchronization message from another master [WRS](#) or from the grandmaster [WRS](#). If you only have one switch in your network you might configure it in the [GrandMaster mode](#).
8. You can plug the other SFP ports [2-16] with violet SFPs (AXGE-3454-0531) to the WR node such as [SPEC](#), [SVEC](#), ...

3.3 USB Connections

The [WRS](#) has three different USB ports used to communicate/monitorize through a PC.

- a. Management Mini-USB (B) port
- b. FPGA Mini-USB (B) UART
- c. ARM Mini-USB (B) UART

These ports correspond themselves to different devices on your computer.

- a. ttyACM0 (when the *Status LED* is green)
- b. ttyUSB0
- c. ttyUSB1

To connect to them you need to open a serial console such as `minicom`¹

```
## Connecting to the Management USB port
minicom -D /dev/ttyACM0 -b 115200

## Connecting to the FPGA UART
minicom -D /dev/ttyUSB0 -b 115200

## Connecting to the ARM UART
minicom -D /dev/ttyUSB1 -b 115200
```

Note: `ttyUSB0` and `ttyUSB1` usually correspond respectively to FPGA and ARM UART. However this order can change dependably on how you plug the cable.

3.4 Login via USB

Once the device has been correctly started up (*Status LED* is green), It is recommended to use the USB management port to connect to the device instead of the ARM UART.

```
## Connecting to the Management USB port
minicom -D /dev/ttyACM0 -b 115200
```

The ARM UART is usually employed during development and monitoring because the kernel and daemons messages are sent to this console.

3.5 Login via SSH

The Ethernet management port automatically obtains its IP using the DHCP protocol. If you don't have any DHCP router/server in your network please refer to the [non-DHCP](#) section.

To obtain the IP of the [WRS](#) you can connect to your DHCP server interface and retrieve the IP, or [connect to ttyACM0](#) to retrieve the IP (`ipconfig eth0`).

If the [WRS](#) IP is for example `192.168.1.50` you might connect using:

```
ssh root@192.168.1.50
```

And press enter when requesting the password.

¹In Debian-like distribution you can install `minicom` by executing `sudo apt-get install minicom`.

3.6 Login using Windows

The process of login to the switch using Windows (XP,Vista,7,8) is pretty similar:

1. You first need to download the [Putty Tool](#) and install it.
2. Then you need to list and find out which serial port in Windows corresponds to which interface. A simple way to perform this is to plug only one USB cable at a time, and go to Device Manager > Ports (COM & LPT) to check the name of the COM<X> port.
3. Finally to connect through the USB you just need to open the Putty tool and configure it as indicated in the figure below. Do not forget to replace the COM9 port name by the one that corresponds to the USB management.

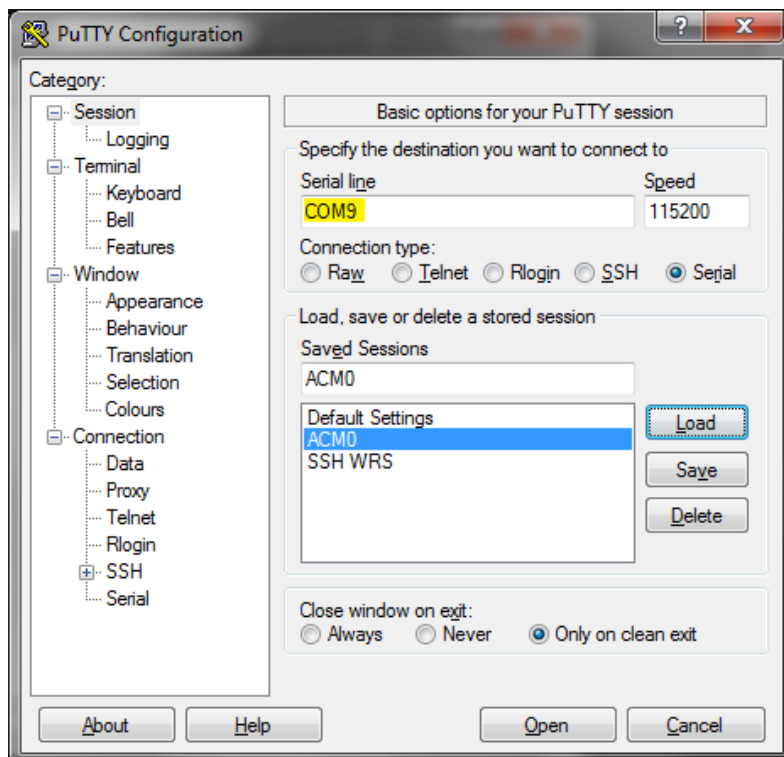


Figure 4: Putty - USB connection

4. Similarly, you can connect to the [WRS](#) using the SSH protocol. You should not forget to replace the IP of your [WRS](#) (yellow) by the one in your subnetwork.

3.7 Login using the Web Management Interface (WMI)

If you want to access and manage the [WRS](#) using the web interface, it is necessary to connect the [WRS](#) manager ethernet port to your local network and obtain the IP as explained in [login via SSH](#). The access should be carried out by a network browser (Mozilla Firefox and Google Chrome supported) as it follows:

1. Open your browser and type the IP address (i.e. 192.168.1.50) of the [WRS](#). By default, the network IP configuration is provided by the DHCP server in the same network and can be retrieved from it.

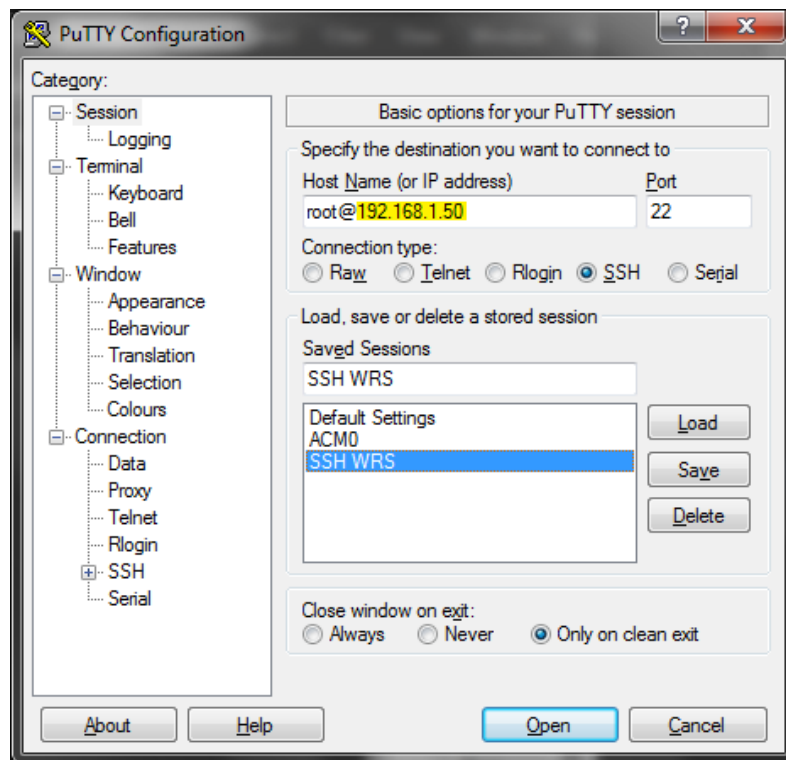


Figure 5: Putty - SSH connection

White-Rabbit Switch Manager

MAIN MENU

Dashboard

Login

Username

Password

[Login](#)

DASHBOARD

Switch Info	
Hostname:	wrs3
Switch Mode:	GrandMaster
IP Address:	192.168.1.54 (dhcp)
HW Address:	02:34:56:78:9A:BC
OS Version:	2.6.39-wr-switch #1 Wed Jun 18 20:28:58 CEST 2014
Gateway Version:	3.3
PCB Version:	3.30
FPGA:	LX240T
Compiling time:	Jun 18 2014 20:29:21
White-Rabbit Date:	1403124223.676672000 2014-06-18 20:43:43.676672000
PPSi:	[on]
Net-SNMP:	[on] ver. 5.6.1.1 (port 161) [OIDs]
NTP Server:	192.168.1.61 UTC
Max. Filesize Upload:	40M

White Rabbit Project - Open Hardware and Source Project [White-Rabbit OHR](#)

Figure 6: Web Management Interface - Login

2. After accessing the **WMI**, you should enter the web interface user and password, which is not same for the SSH connection, otherwise you will be only able to see the Dashboard info. By default the user is **admin** with no password. For this reason it is strongly recommended to change the password.

In order to change the **WMI** password you just need to click on “**User: admin**” on the left side of the webpage. You have to enter your username (**admin**), old password, new password and repeat the new password. Once you submit the new password you will be redirected to the main screen and logged out.

3.8 Web Management Interface Features:

WMI is a web interface that allows the **WRS** management from a web browser. It displays the main configuration and status of the main services and programs that are available for the switch, such as endpoints’ mode and calibration status, SFP calibration, PTP, SNMP, VLANs, etc. It acts as an abstraction layer between the back-end scripts and programs in `/wr/bin/` folder, making the WR switch management easier for the user.

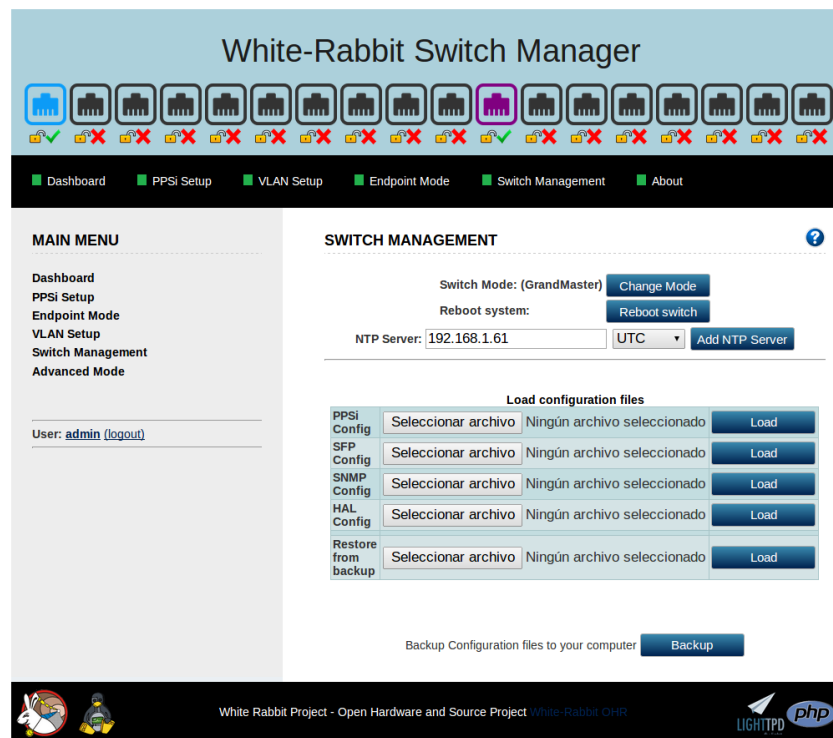


Figure 7: Web Management Interface - Switch Management

List of all the actions that can be performed by using the **WMI**:

- Display info: HW information, services status and main configuration.
- Stop/run services: PPSi, WRSW_HAL, NTP.
- NTP server setup.
- Modify endpoint `wr_master/wr_slave` mode.
- VLAN setup.

- White-Rabbit timing.
- Modify maximum filesize of uploaded files to the switch.
- PPSi daemon configuration: clock class, clock accuracy, etc.
- Terminal simulation avoiding SSH connections.
- Login system.
- Modify login password.
- Load lm32 and FPGA binaries into the switch.
- Switch reboot.
- Backup and restore configuration files for services (PPSi, HAL, SNMP, etc).
- Restore configuration files from tarball.
- Flash firmware.
- Backup firmware.

If you want to know more about each section you can click the help icon that you will find on the top-right corner of each page.

3.9 Console tools:

Once you are logged via a terminal you can use various tools to monitor the [WRS](#). All these tools are found in `/wr/bin/` which is included in the `$PATH`.

The following list resumes the most interesting commands:

- `wrs_version`: Print information about the SW & HW version of the [WRS](#).
- `rtu_stat`: Routing Table Unit Statistic, returns the routing table information where we can find which MAC needs to be forwarded to which port. It also allows to add and delete entries.
- `wr_mon`: WR Switch Sync Monitor, outputs information about the state of WR synchronisation such as Phase Tracking, Master-Slave delay, link asymmetry, etc...
- `wrs_vlans`: Creation and configuration of VLANs.

Note: *More information about the tools are explained in the [wrs-user-manual.pdf](#) or can be obtain using the embedded help argument: `--help`, `-h` or `help`.*

Warning: The SFP ports are labeled from 1 to 18 on the front panel but their corresponding network interface are named from `wr0` to `wr17`.

4 Configurations

We strongly suggest you to configure the switch using the Web Management Interface. However if you prefer to configure it using a terminal just follow some examples below.

4.1 Booting

After 10 seconds, the bootloader automatically loads the [WRS](#) firmware from the Flash NAND memory of the switch. If you connect to the ARM debug port you might see the following message:

```
Welcome on WRSv3 Boot Sequence
 1: boot from nand (default)
 2: boot from TFTP script
 3: edit config
 4: exit to shell
 5: reboot
```

Note: If you want to change how the [WRS](#) is booted you can place a `wrboot` script in your TFTP root folder and select the second option or you can edit the configuration (third option). Please find more explanations in the [wrs-user-manual.pdf](#)

4.2 Non-DHCP user

If you have no DHCP server in your network you must connect to the [WRS](#) using the [login via USB method](#) and then edit the interfaces file:

```
vi /etc/network/interfaces
```

for example, in a 192.168.1.x subnetwork you might replace the `iface eth0 inet dhcp` by

```
iface eth0 inet static
  address 192.168.1.10
  netmask 255.255.255.0
  network 192.168.1.0
  broadcast 192.168.1.255
  gateway 192.168.1.1
```

Note: If you are willing to use TFTP script in a non-DHCP network, you must also statically set the IP in the bootloader configuration.

4.3 GrandMaster mode

In a White Rabbit network, almost all the switches are configured as master (a.k.a SimpleMaster) (default configuration). They transmit the clock signal that comes from other switches. However the “top” switch connected to the GPS signal is called the **GrandMaster** and is configured in a specific way.

To configure a switch as GrandMaster you must edit² the `wrsw_hal.conf` file

```
vi /wr/etc/wrsw_hal.conf
```

And uncommenting the `timing.mode` value the line below:

²To edit in `vi`: `Ins` Insert text; `Esc` back to normal mode; `:wq` Save and Exit

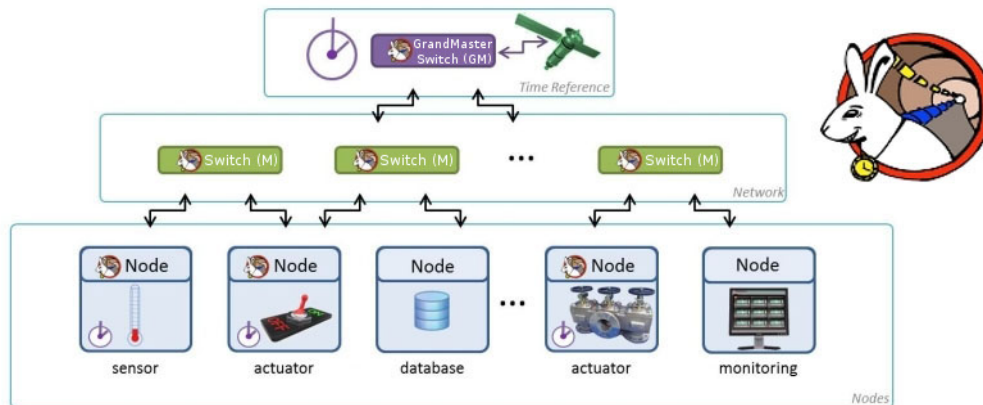


Figure 8: White Rabbit Network

```
timing = {
  -- other values
  mode = "GrandMaster"; -- grand-master with external reference
};
```

Finally you need to connect the 10MHz and PPS from a clock source to the switch SMC inputs, and reboot the switch.

For a more detailed explanation on how to configure and connect the switch as GrandMaster, please consult the [wr_external_reference.pdf](#) document.

4.4 Firmware updates

Since the firmware v4.1 we have improved the update procedure and the switch is able to upgrade by itself.

Just copy the firmware you have download to the /update folder of the switch. For instance you can do:

```
scp wr-switch-sw-v<X.X-YYYYMMDD>_binaries.tar root@192.168.1.50:/update/wrs-firmware.tar
```

and then reboot the switch.

You can also use the Advanced Mode > Firmware menu in the Web Interface to perform this step.

Note: If you are upgrading from v3.3 or v4.0 please refer to the old manual.

4.5 Advanced configuration

Please refer to the White Rabbit Switch: software build scripts manual ([wrs-user-manual.pdf](#)) that explains advanced topics such as:

- Advanced flashing options.
- Configuring specific MAC address.
- Modification of the bootloader.
- Changing Slave/Master port type.
- Building from the sources.
- etc.

5 Safety Notes

Warning: Do not block the air vents which are located on back panel of the [WRS](#), the internal temperature might increase and damage the switch.

Warning: To increase the lifetime of the [WRS](#) it is recommended to use the switch in a controlled ambient environment and limit to the ambient condition stated in the [Specification Appendix](#).

Warning: The standard power source for this equipment is designed to work in the range of 110-240V with 50-60Hz.

Warning: This equipment is intended to be grounded using the *Grounded Connector*. Ensure that the host is connected to earth ground during normal use.

6 Appendix

6.1 Specification

<i>FPGA</i>	
Type	Xilinx Virtex-6 (LX240T)
Package	1156-pin BGA
Slices	37,680 (4 LUTs and 8 flip-flops)
Memories	416x36Kb (9,504Kb) Block RAM 32MB NOR Flash
Softcore	LatticeMico32 (LM32)
I/O	20 GTX transceivers for SFP links 40 GPIO for generic purpose (LEDs, SFP detection, ...)
Monitoring	Monitoring power supply
Temperature	Sensor control

<i>CPU</i>	
Type	ARM Atmel AT91 SAM9G45
Core	400MHz (ARM926E)
Memories	64MB DDR2 (16-bit bus chip) 256MB NAND flash chip 8MB boot flash
I/O	32bit Async Bridge with FPGA 100Base-T Ethernet
OS	Linux (Kernel v2.6.39)

<i>OnChip Clock</i>	
PLL	AD9516 (14-Output Clock Generator with Integrated 1.6 GHz VCO)
Synthesizer	TI CDCM61002RHBT (28-683MHz)
DAC	2xAD5662BRJ (16bit; 2.7-5.54V)

<i>Others</i>	
Soldering	IPC- 610 Rev E Class 2
Certification	ISO-9001, ISO-14001, CE, RoHS
Power Supply	100-240VAC, 2.0A 50-60 Hz 12V DC, 6.66A – 80W max
Environmental Conditions	Temperature: -10°C ~ +50°C Humidity: 0% ~ 90% RH

6.2 Features

- PTPv2 (IEEE 1588-2008) with PPSi
- WRP daemon (node discovery, etc.)
- VLANs
- DHCP client
- SSH server
- Web Management Interface
- SNMP
- Rsyslog
- Python Support
- NTP Client/Relay/Server
- ARP/ DNS / EtherWake protocol

6.3 Warranty

The [WRS](#) is fully factory tested and warranted against manufacturing defects for a period of one year. As the circumstances under which this [WRS](#) is installed can not be controlled, failure of the [WRS](#) due to installation problems can not be warranted. This includes misuse, miswiring, overheating, operation under loads beyond the design range of the [WRS](#). For warranty or non-warranty replacement send the [WRS](#) to:

Seven Solutions
C/ Baza, parcela 19, nave 3
Polígono Industrial Juncaril,
18210 Peligros
(Granada), SPAIN.

6.4 FAQs & Troubleshooting

If you are experiencing some issues please look first at the [WRS FAQ](#) wiki page if you can find an answer.

You can also reach out the wiki to see if your issue is a known bug and if a solution was found: <http://www.ohwr.org/projects/wr-switch-sw/wiki/Bugs>

You can also request Technical Support by [contacting our company](#)

Bug report

Feel free to send us a bug report with the full state of the [WRS](#) by executing the following command:

```
#On the WRS
wrs_version > /tmp/bug_report.txt
rtu_stat >> /tmp/bug_report.txt
dmesg >> /tmp/bug_report.txt

#Obtain the IP of the switch
ifconfig eth0 | grep addr
```

And retrieving the file from your computer by using SSH:

```
#On your client
scp root@<IP_of_the_switch>:/tmp/bug_report.txt ~
```

6.5 Contact-Us

To contact Seven Solutions company please use:

- info@sevensols.com
- (+34) 958 285 024
- <http://www.sevensols.com>

6.6 Save Our Environment



This symbol means that when the equipment has reached the end of its life cycle, it must be taken to a recycling centre and processed separate from domestic waste.

The cardboard box, the plastic contained in the packaging, and the parts that make up this device can be recycled in accordance with regionally established regulations.

Never throw this electronic equipment out along with your household waste. You may be subject to penalties or sanctions under the law. Instead, ask for instructions from your municipal government on how to correctly dispose of it. Please be responsible and protect our environment.

7 References

- [wrs-3/18.pdf](#): Datasheet for the White Rabbit Switch v3 - 18 SFPs
- [wrs-user-manual.pdf](#): User manual documentation of the tools.
- [wr_external_reference.pdf](#): Connect the **WRS** in GrandMaster mode.
- [whiterabbitsolution](#): White Rabbit as a complete timing solutions
- [WRS Wiki](#): White Rabbit Switch Wiki on ohwr.org
- [WRS FAQ](#): WR-Switch Frequently Added Questions
- [wr-switch-testing](#): Project for testing the switch itself
- [SFPs Wiki](#): Type of SFP supported by the **WRS**
- [latest stable release](#): http://www.sevensols.com/dl/wr-switch-sw/bin/latest_stable.tar.gz
- [\[flashing package\]](#): http://www.sevensols.com/dl/wrs-flashing/latest_stable.tar.gz