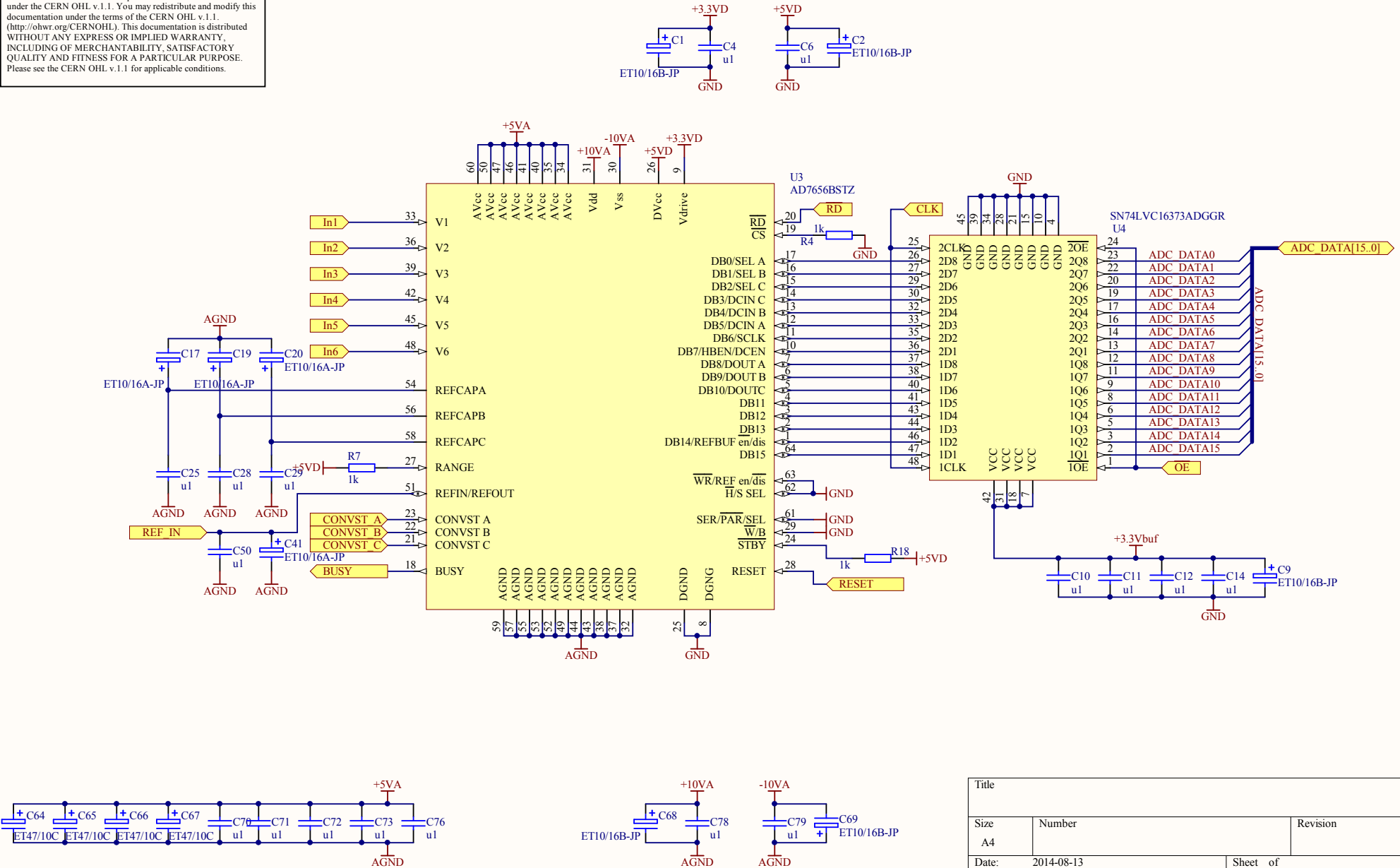
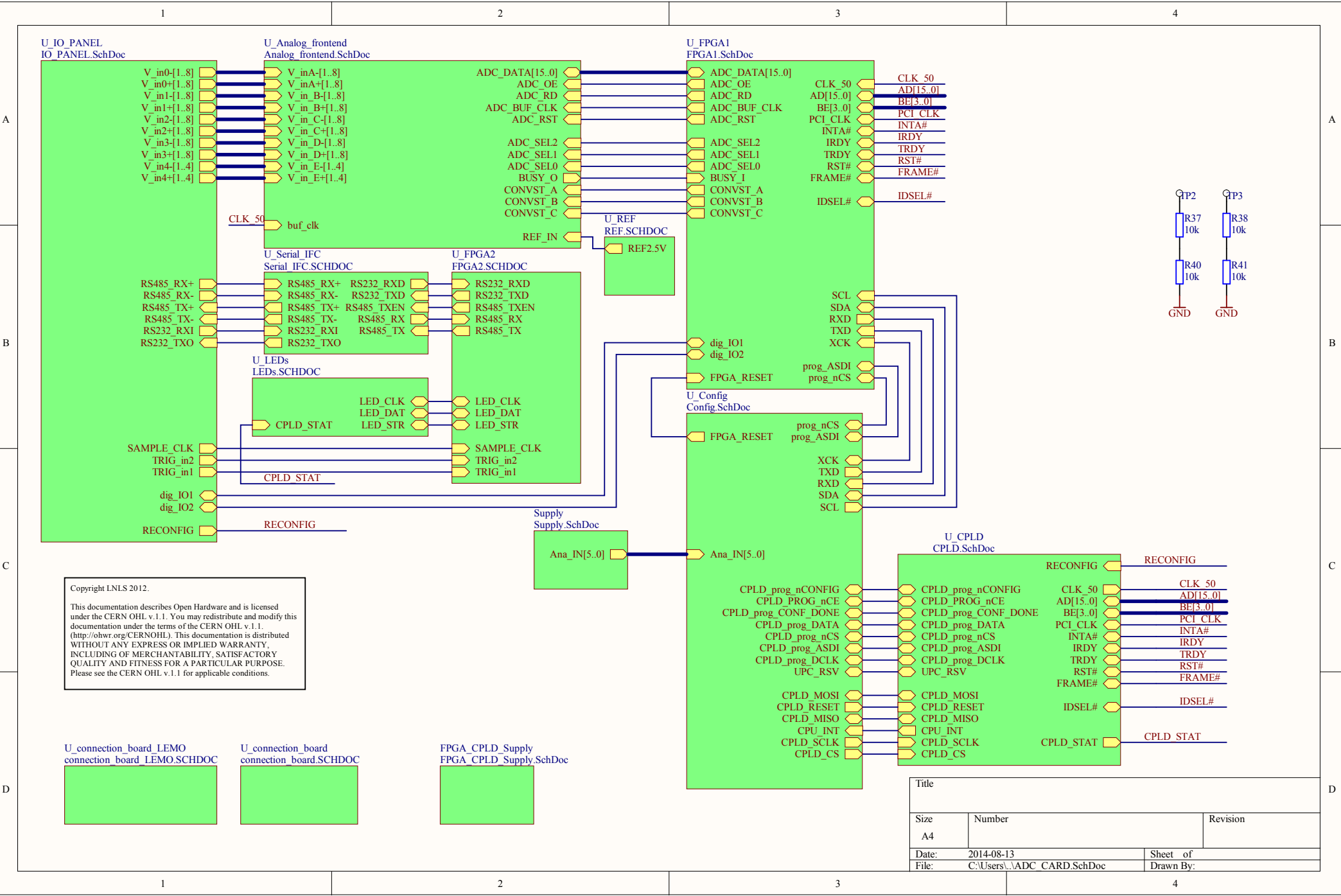


Copyright LNLS 2012.

This documentation describes Open Hardware and is licensed under the CERN OHL v.1.1. You may redistribute and modify this documentation under the terms of the CERN OHL v.1.1. (<http://ohwr.org/CERNOHL>). This documentation is distributed WITHOUT ANY EXPRESS OR IMPLIED WARRANTY, INCLUDING OF MERCHANTABILITY, SATISFACTORY QUALITY AND FITNESS FOR A PARTICULAR PURPOSE. Please see the CERN OHL v.1.1 for applicable conditions.



Title		
Size	Number	Revision
A4		
Date:	2014-08-13	Sheet of
File:	C:\Users\...\ADC.SCHDOC	Drawn By:



A

A

B

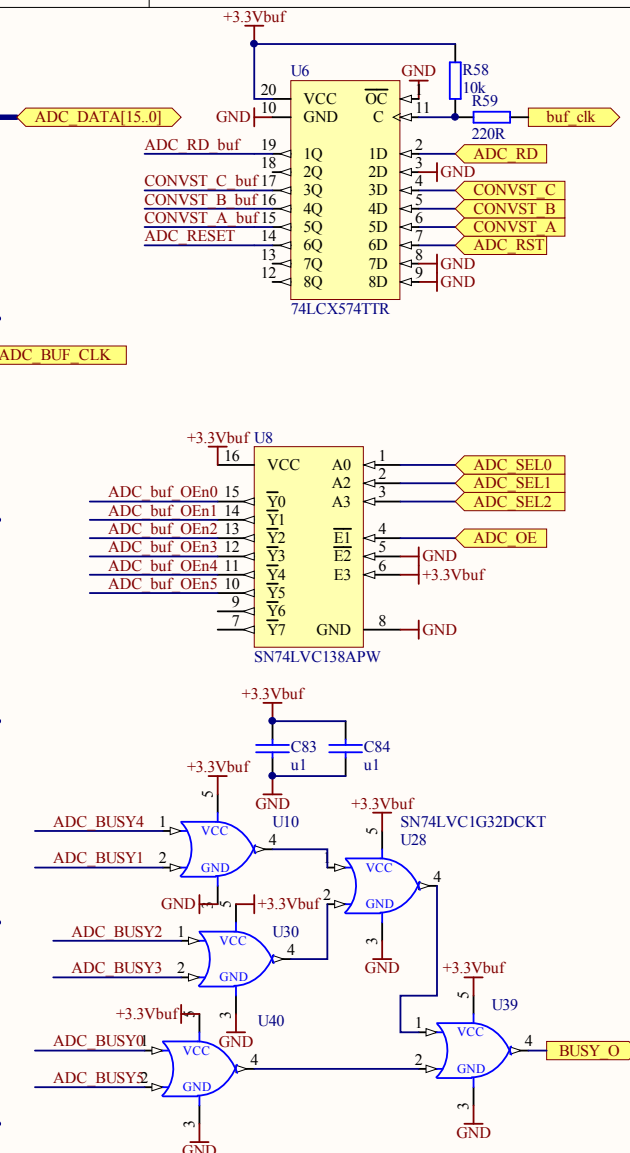
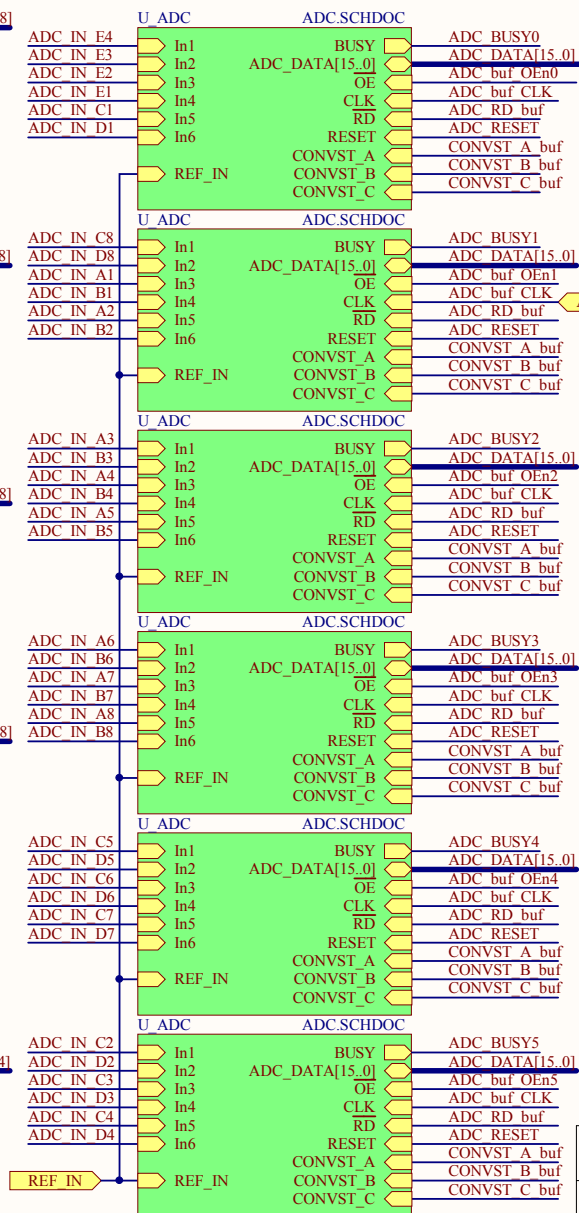
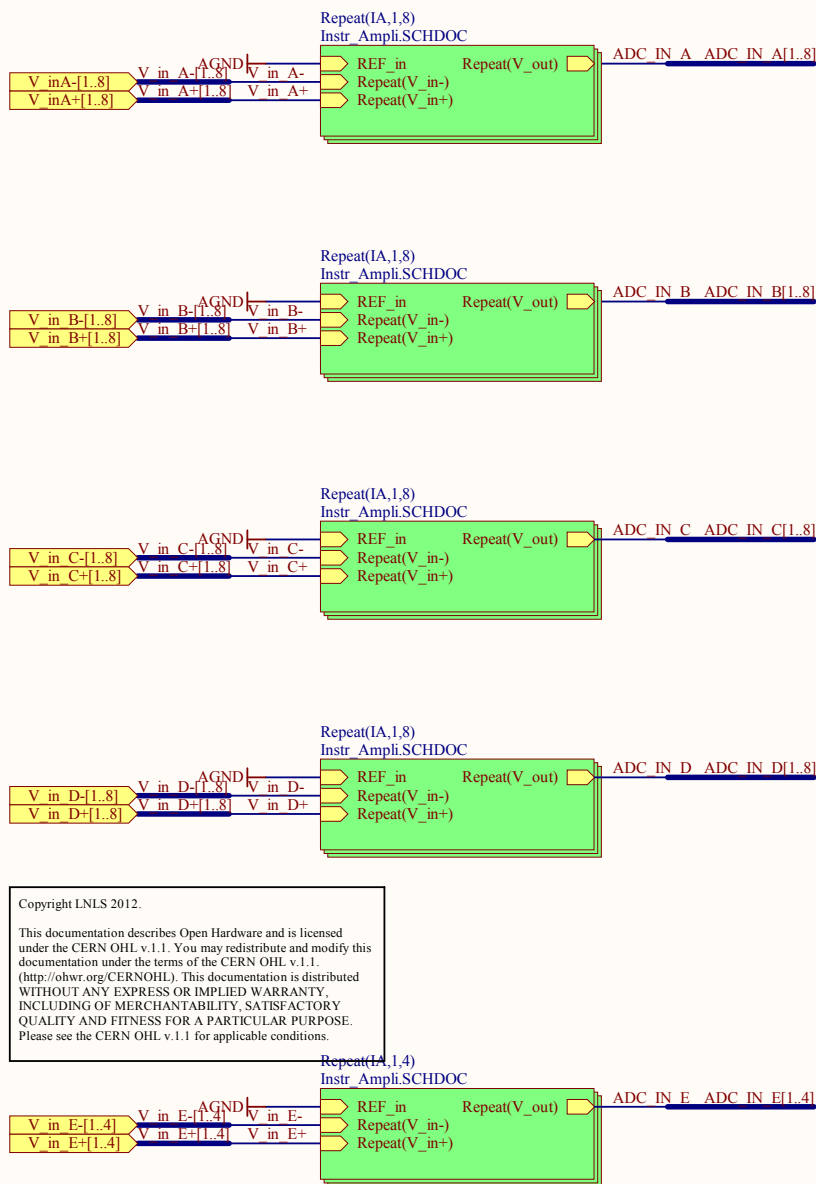
B

C

C

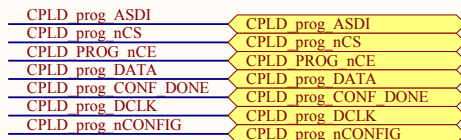
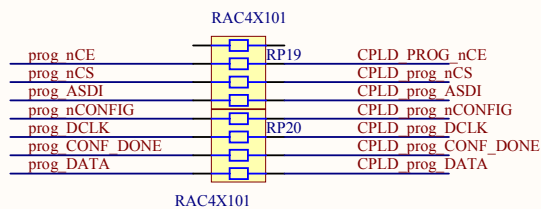
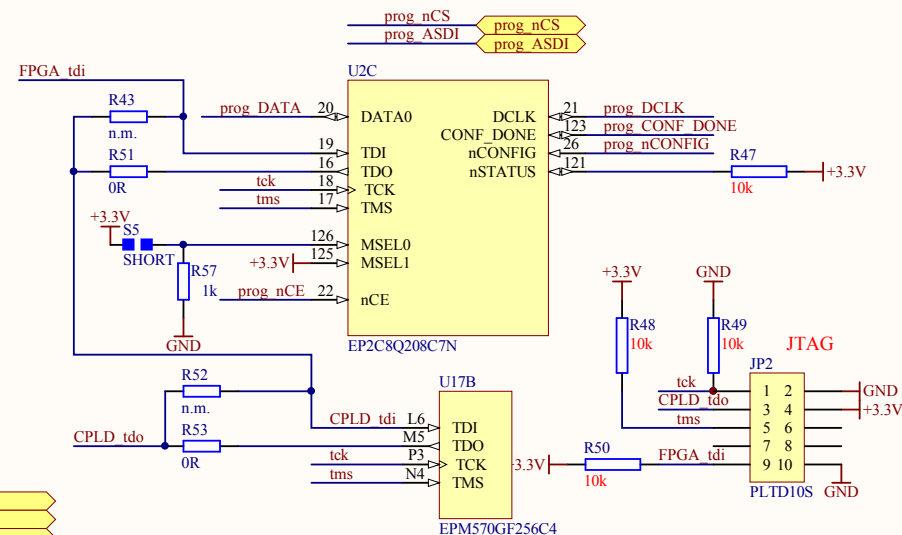
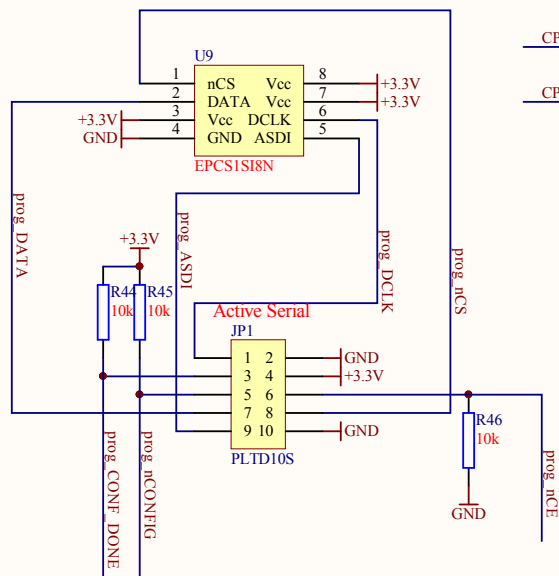
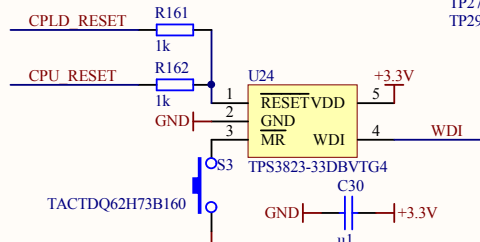
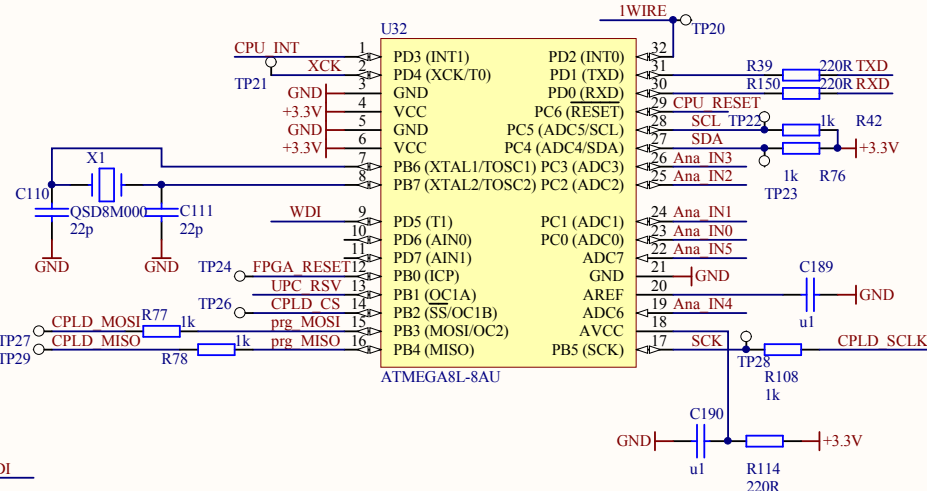
D

D



Title		
Size	Number	Revision
A4		
Date:	2014-08-13	Sheet of
File:	C:\Users\...\Analog_frontend.SchDoc	Drawn By:

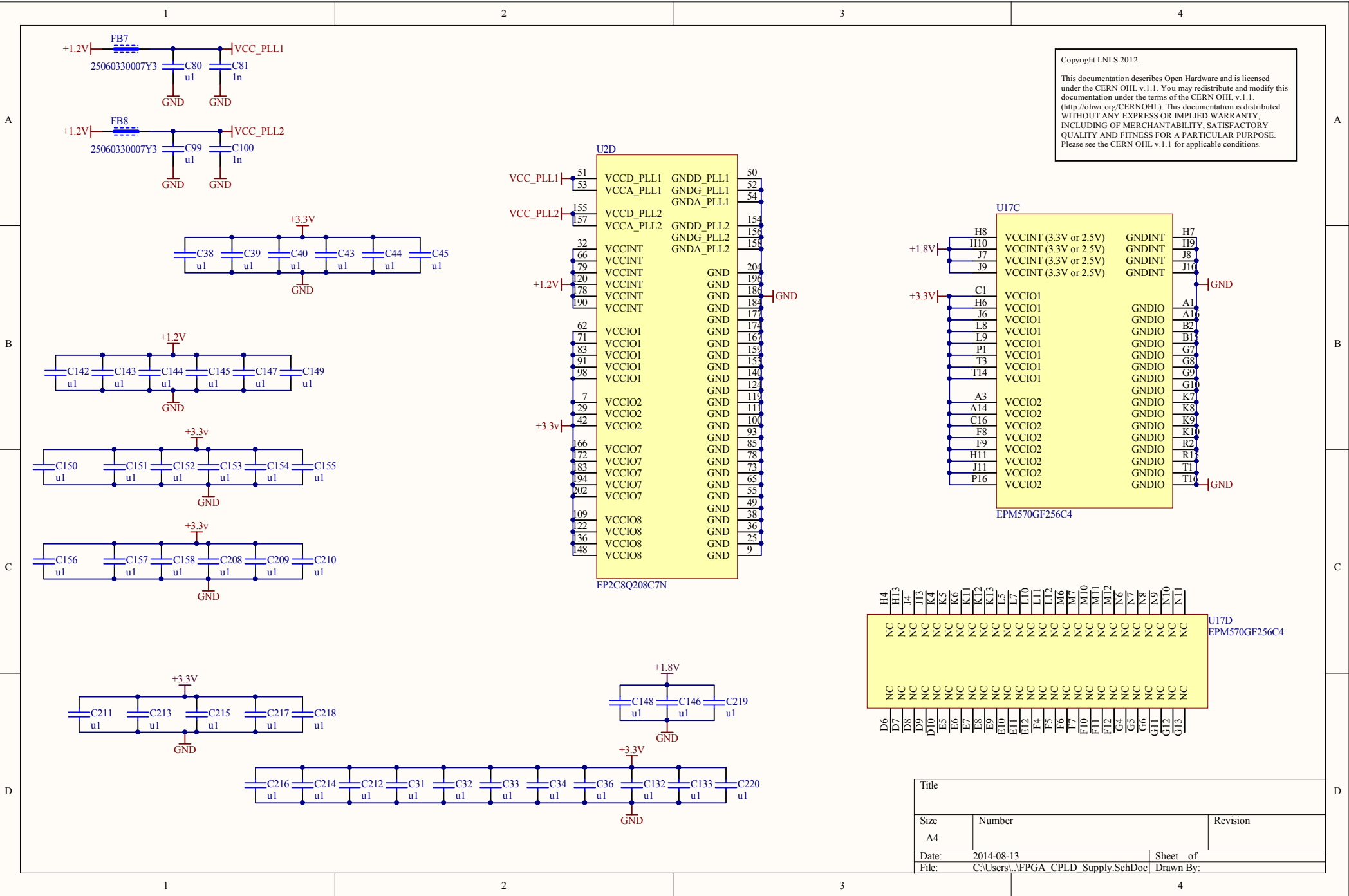
This documentation describes Open Hardware and is licensed under the CERN OHL v.1.1. You may redistribute and modify this documentation under the terms of the CERN OHL v.1.1. (<http://ohwr.org/CERNOHL>). This documentation is distributed WITHOUT ANY EXPRESS OR IMPLIED WARRANTY, INCLUDING OF MERCHANTABILITY, SATISFACTORY QUALITY AND FITNESS FOR A PARTICULAR PURPOSE. Please see the CERN OHL v.1.1 for applicable conditions.



Title			
Size A4	Number		Revision
Date:	2014-08-13	Sheet	of
File:	C:\Users\...\Config SchDoc	Drawn By:	

Copyright LNLS 2012.

This documentation describes Open Hardware and is licensed under the CERN OHL v.1.1. You may redistribute and modify this documentation under the terms of the CERN OHL v.1.1. (<http://ohwr.org/CERNOHL>). This documentation is distributed WITHOUT ANY EXPRESS OR IMPLIED WARRANTY, INCLUDING OF MERCHANTABILITY, SATISFACTORY QUALITY AND FITNESS FOR A PARTICULAR PURPOSE. Please see the CERN OHL v.1.1 for applicable conditions.



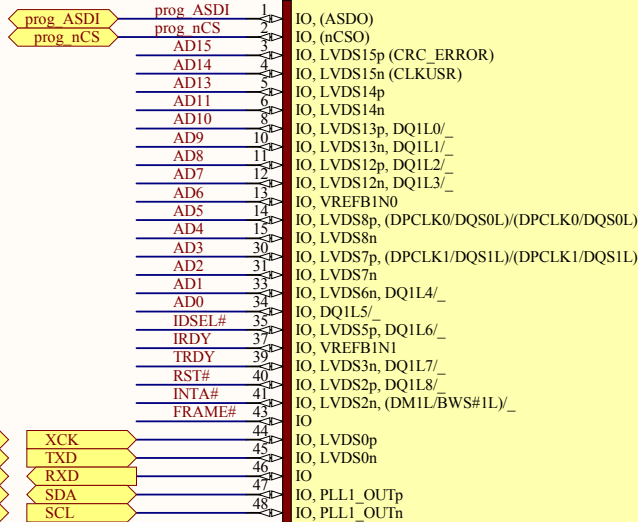
Title		
Size	Number	Revision
A4		
Date:	2014-08-13	Sheet of
File:	C:\Users\...FPGA CPLD Supply.SchDoc	Drawn By:

Copyright LNLS 2012.

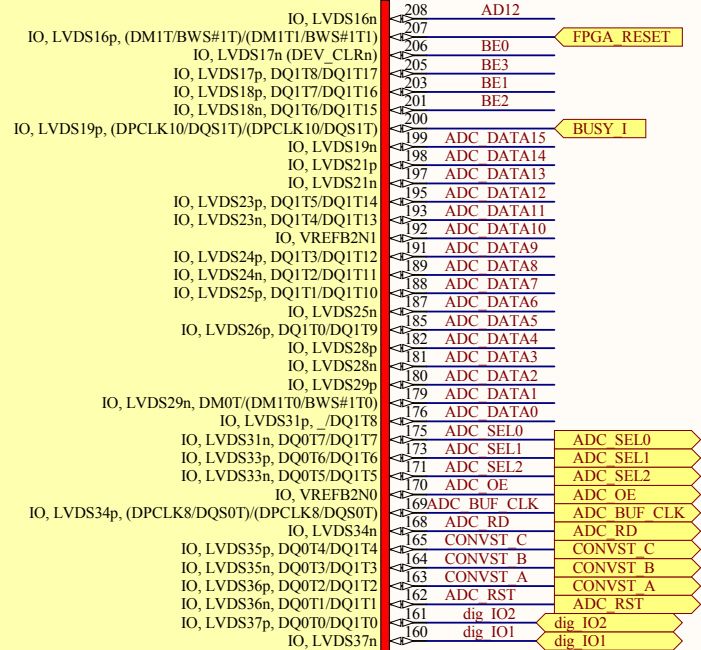
This documentation describes Open Hardware and is licensed under the CERN OHL v.1.1. You may redistribute and modify this documentation under the terms of the CERN OHL v.1.1. (<http://ohwr.org/CERNOHL>). This documentation is distributed WITHOUT ANY EXPRESS OR IMPLIED WARRANTY, INCLUDING OF MERCHANTABILITY, SATISFACTORY QUALITY AND FITNESS FOR A PARTICULAR PURPOSE. Please see the CERN OHL v.1.1 for applicable conditions.

U2A

BANK 1



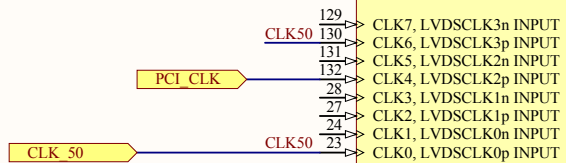
BANK 2



EP2C8Q208C7N

ADC_DATA[15..0]

U2E



EP2C8Q208C6

Title		
Size	Number	Revision
A4		
Date:	2014-08-13	Sheet of
File:	C:\Users\...\FPGA1.SchDoc	Drawn By:

Copyright LNLS 2012.

This documentation describes Open Hardware and is licensed under the CERN OHL v.1.1. You may redistribute and modify this documentation under the terms of the CERN OHL v.1.1. (<http://ohwr.org/CERNOHL>). This documentation is distributed WITHOUT ANY EXPRESS OR IMPLIED WARRANTY, INCLUDING OF MERCHANTABILITY, SATISFACTORY QUALITY AND FITNESS FOR A PARTICULAR PURPOSE. Please see the CERN OHL v.1.1 for applicable conditions.

U2B

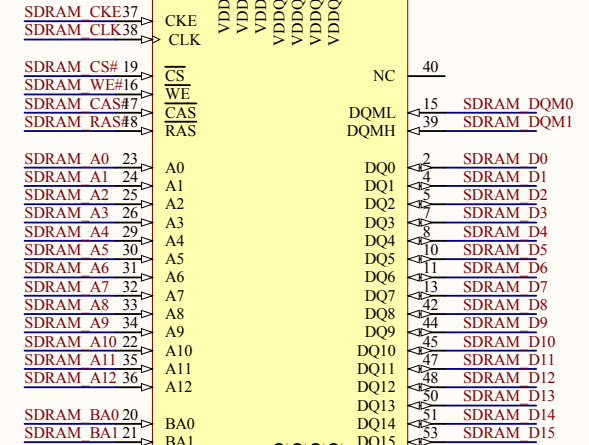
BANK 3

BANK 4

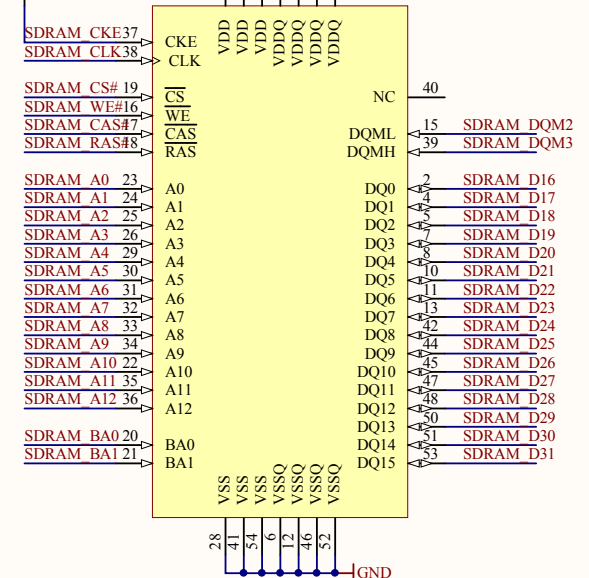
EP2C8Q208C7N

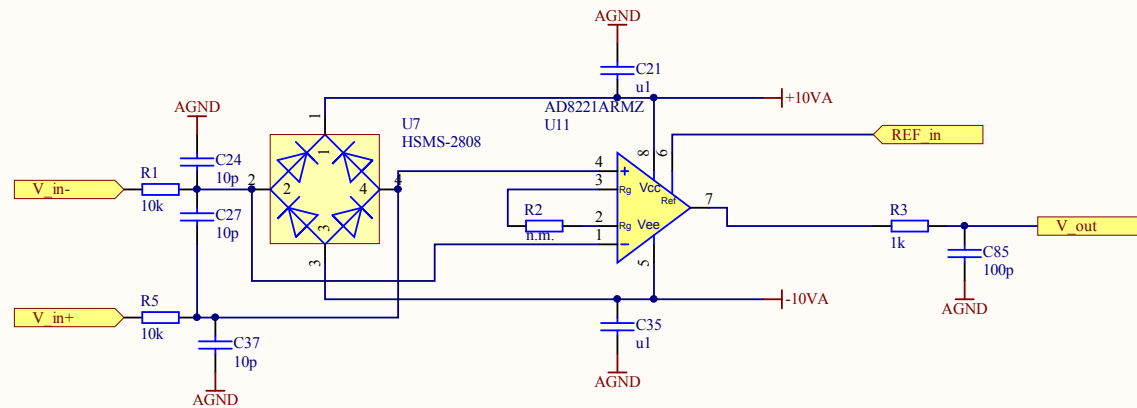
LED STR
LED CLK
LED DAT

+3.3V
U19
MT48LC16M16A2P-75:D



+3.3V
R33
10k
+3.3V
U20
MT48LC16M16A2P-75:D





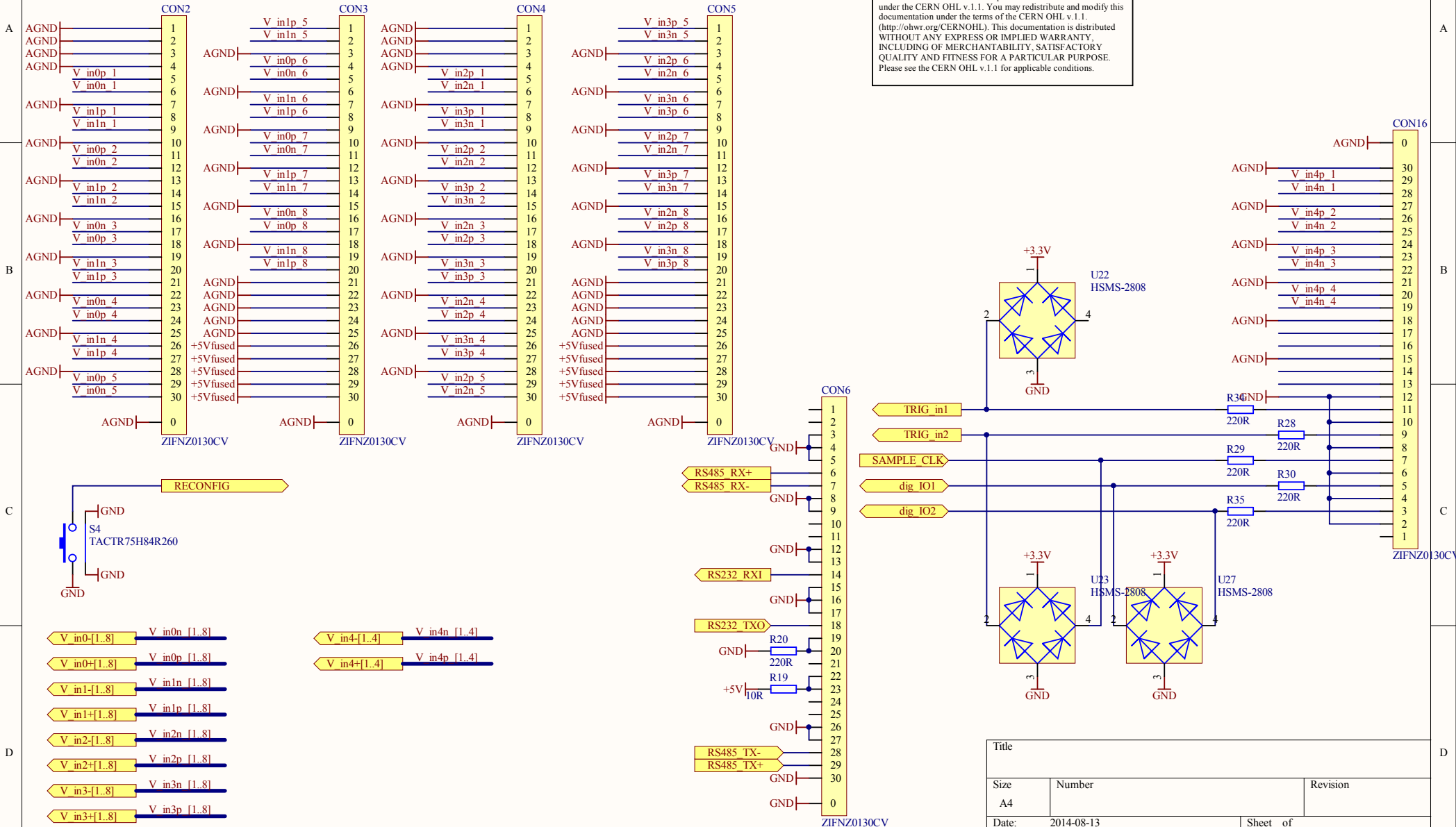
Copyright LNLS 2012.

This documentation describes Open Hardware and is licensed under the CERN OHL v.1.1. You may redistribute and modify this documentation under the terms of the CERN OHL v.1.1. (<http://ohwr.org/CERNOHL>). This documentation is distributed WITHOUT ANY EXPRESS OR IMPLIED WARRANTY, INCLUDING OF MERCHANTABILITY, SATISFACTORY QUALITY AND FITNESS FOR A PARTICULAR PURPOSE. Please see the CERN OHL v.1.1 for applicable conditions.

Title		
Size	Number	Revision
A4		
Date:	2014-08-13	Sheet of
File:	C:\Users\...\Instr_Ampli.SCHDOC	Drawn By:

Copyright LNLS 2012.

This documentation describes Open Hardware and is licensed under the CERN OHL v.1.1. You may redistribute and modify this documentation under the terms of the CERN OHL v.1.1. (<http://ohwr.org/CERNOHL>). This documentation is distributed WITHOUT ANY EXPRESS OR IMPLIED WARRANTY, INCLUDING OF MERCHANTABILITY, SATISFACTORY QUALITY AND FITNESS FOR A PARTICULAR PURPOSE. Please see the CERN OHL v.1.1 for applicable conditions.



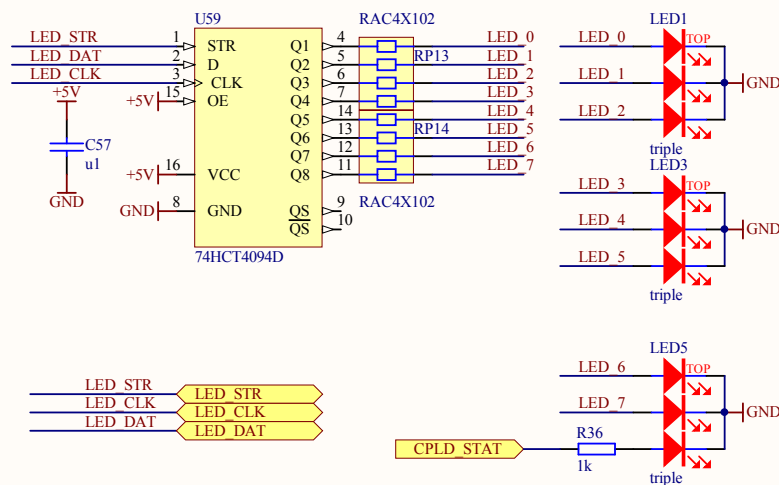
Title		
Size	Number	Revision
A4		
Date:	2014-08-13	Sheet of
File:	C:\Users\...IO_PANEL.SchDoc	Drawn By:

A

B

C

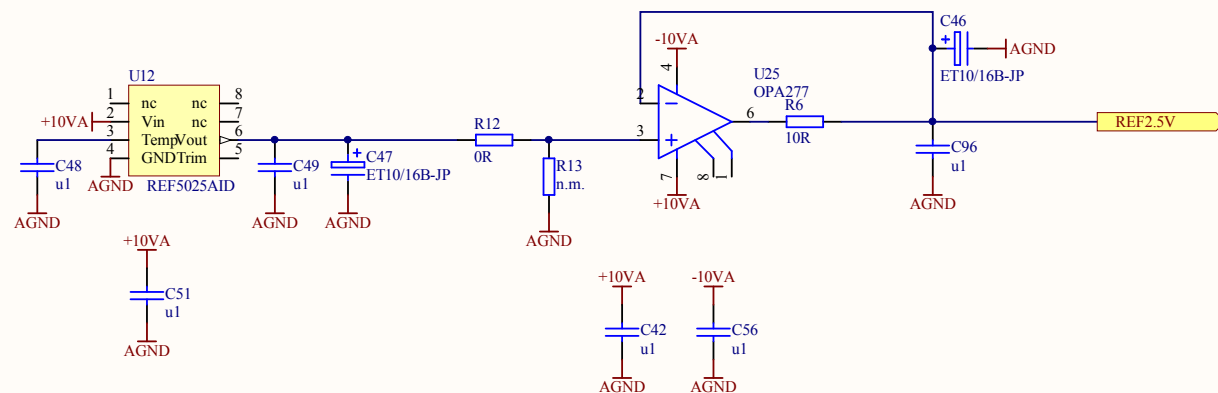
D



Copyright LNS 2012.

This documentation describes Open Hardware and is licensed under the CERN OHL v.1.1. You may redistribute and modify this documentation under the terms of the CERN OHL v.1.1. (<http://ohw.org/CERNOHL>). This documentation is distributed WITHOUT ANY EXPRESS OR IMPLIED WARRANTY, INCLUDING OF MERCHANTABILITY, SATISFACTORY QUALITY AND FITNESS FOR A PARTICULAR PURPOSE. Please see the CERN OHL v.1.1 for applicable conditions.

Title		
Size A4	Number	Revision
Date:	2014-08-13	Sheet of
File:	C:\Users\...\LEDs SCHDOC	Drawn By:



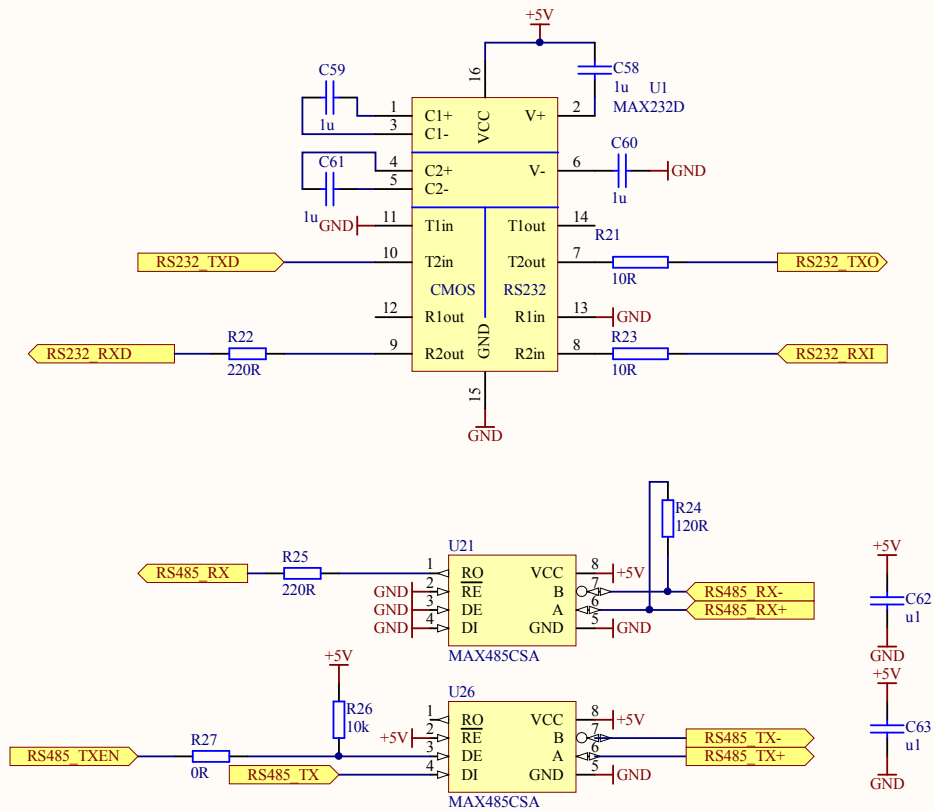
Copyright LNL 2012.

This documentation describes Open Hardware and is licensed under the CERN OHL v.1.1. You may redistribute and modify this documentation under the terms of the CERN OHL v.1.1. (<http://ohwr.org/CERNOHL>). This documentation is distributed WITHOUT ANY EXPRESS OR IMPLIED WARRANTY, INCLUDING OF MERCHANTABILITY, SATISFACTORY QUALITY AND FITNESS FOR A PARTICULAR PURPOSE. Please see the CERN OHL v.1.1 for applicable conditions.

Title		
Size	Number	Revision
A4		
Date:	2014-08-13	Sheet of
File:	C:\Users\...REF.SCHDOC	Drawn By:

Copyright LNL5 2012.

This documentation describes Open Hardware and is licensed under the CERN OHL v.1.1. You may redistribute and modify this documentation under the terms of the CERN OHL v.1.1. (<http://ohwr.org/CERNOHL>). This documentation is distributed WITHOUT ANY EXPRESS OR IMPLIED WARRANTY, INCLUDING OF MERCHANTABILITY, SATISFACTORY QUALITY AND FITNESS FOR A PARTICULAR PURPOSE. Please see the CERN OHL v.1.1 for applicable conditions.



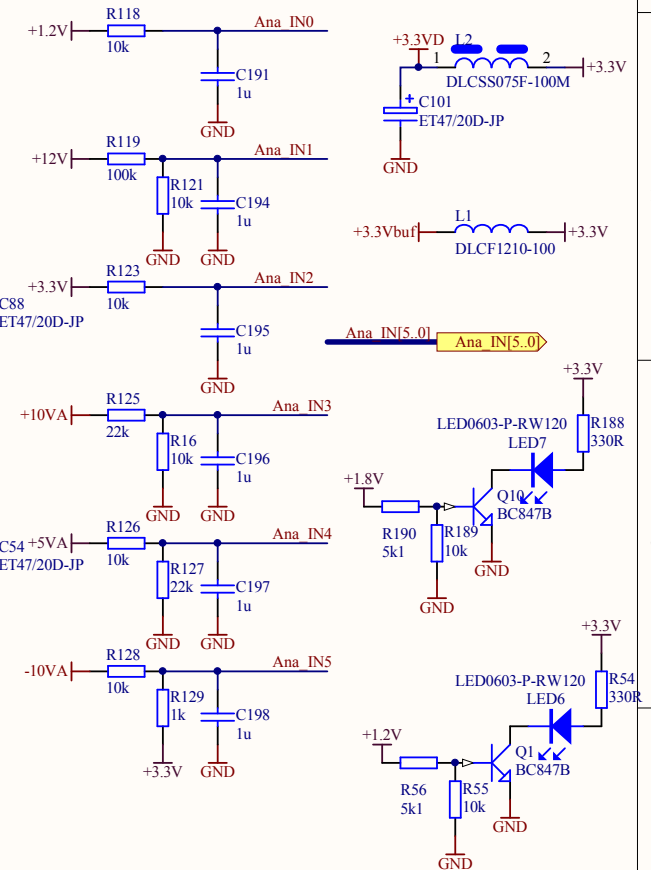
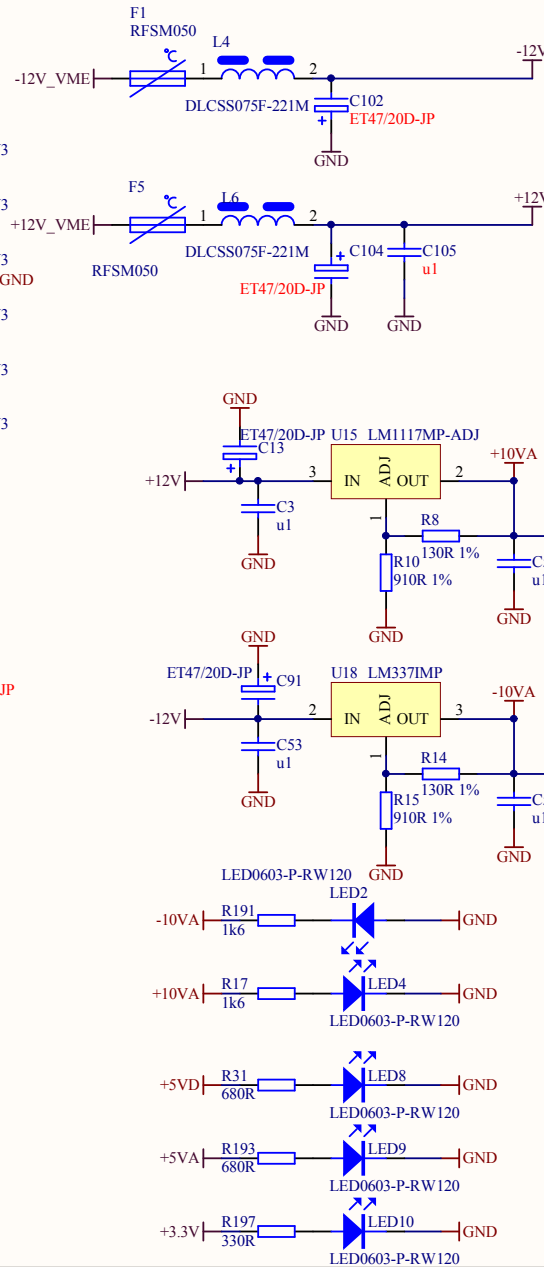
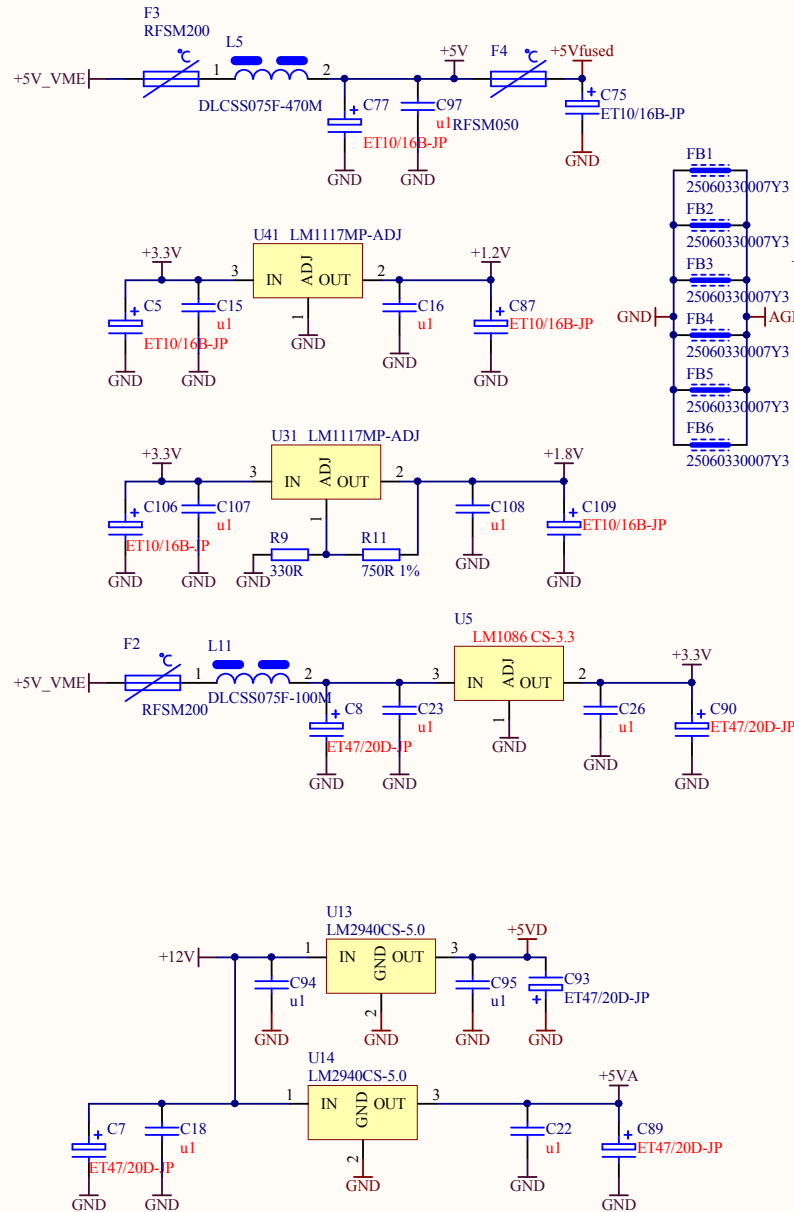
Title		
Size	Number	Revision
A4		
Date:	2014-08-13	Sheet of
File:	C:\Users\Serial IFC.SCHDOC	Drawn By:

1

2

3

4



Copyright LNLS 2012.

This documentation describes Open Hardware and is licensed under the CERN OHL v.1.1. You may redistribute and modify this documentation under the terms of the CERN OHL v.1.1. (<http://ohwr.org/CERNOHL>). This documentation is distributed WITHOUT ANY EXPRESS OR IMPLIED WARRANTY, INCLUDING OF MERCHANTABILITY, SATISFACTORY QUALITY AND FITNESS FOR A PARTICULAR PURPOSE. Please see the CERN OHL v.1.1 for applicable conditions.

Title		
Size	Number	Revision
A4		
Date:	2014-08-13	Sheet of
File:	C:\Users\...supply.SCHDOC	Drawn By: