

# **SaFariPark/MultiSFP manual**

Vincent van Beveren

May 10, 2017

# 1 Introduction

## 2 MultiSFP

## 3 SaFariPark

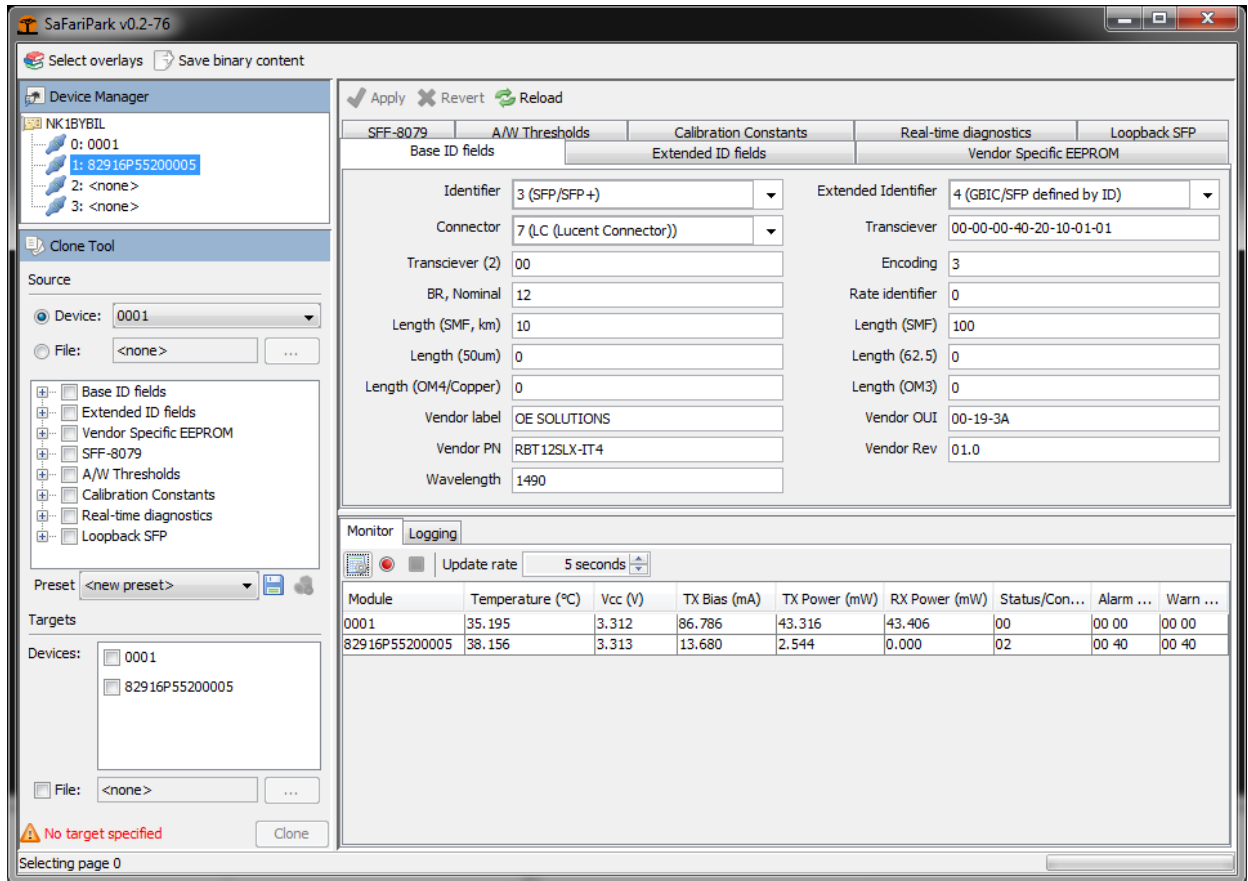


Figure 3.1: Start up screen of SaFariPark

SaFariPark is the main GUI application for reading, calibrating and configuring SFP modules. When loaded a window should appear as presented in Figure 3.1. All connected MultiSFP devices are listed in the device manager top right. Each bay shows the connection state and if a module is placed, the part identifier and serial number.

### 3.1 Viewing and editing the SFP module contents

SaFariPark shows, in the edit pane, a higher overview of the content loaded inside the SFP module.

✓ Apply
✗ Revert
↻ Reload

A/W Thresholds	Calibration Constants	Real-time diagnostics	Maxim DS1856M	Loopback SFP
Base ID fields	Extended ID fields	Vendor Specific EEPROM	SFF-8079	

**Options**

☐ Linear Receiver Output Implemented  
☐ Power Level Declaration  
☐ Cooled Transceiver declaration  
☐ Retimer or CDR  
☒ Paging implemented  
☐ High Power Level Declaration  
☒ Loss of Signal implemented  
☐ Signal Detect Implemented  
☒ TX\_FAULT signal implemented.  
☒ TX\_DISABLE is implemented  
☒ RATE\_SELECT functionality is implemented  
☒ Tunable transmitter technology  
☐ Receiver decision threshold implemented

**Mon Type**

☐ Address change required  
☐ Received power is average  
☐ Externally Calibrated  
☒ Internally Calibrated  
☒ Digital Diag Implemented

BR Max 
BR Min

Vendor SN 
Date Code

Figure 3.2: The editor

## **4 Appendices**

### **4.1 Overlay XML description**