

NFTC v1.00

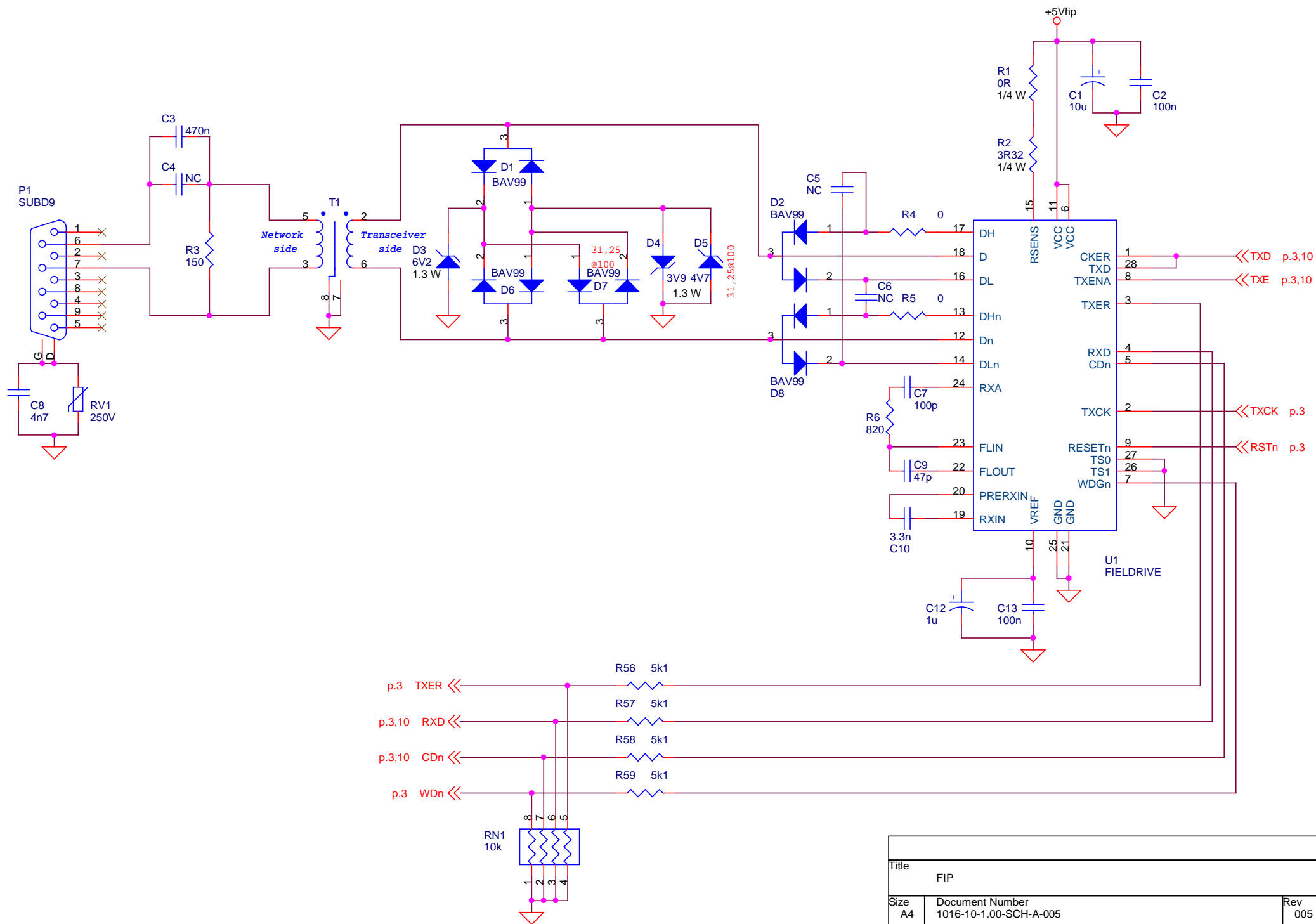
NanoFIP test board

HLP Technologies

35 rue Tournefort
75005 Paris

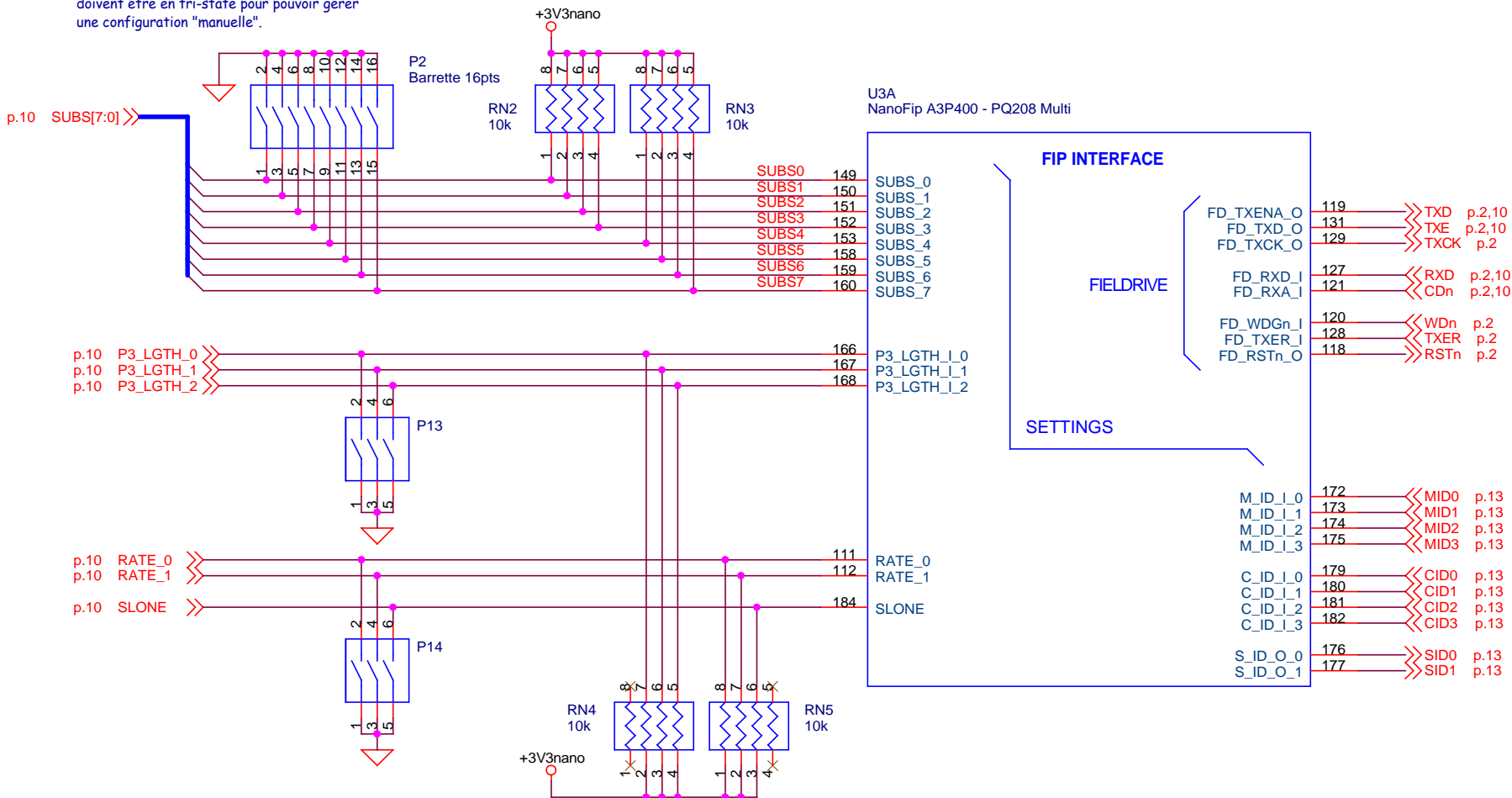
www.hlp.fr

Title		
Cover		
Size A4	Document Number 1016-10-1.00-SCH-A-005	Rev 005
Date:	Monday, May 17, 2010	Sheet 1 of 14



Title		
FIP		
Size	Document Number	Rev
A4	1016-10-1.00-SCH-A-005	005
Date:	Monday, May 17, 2010	Sheet 2 of 14

Les sorties SUBS du FPGA de controle
doivent être en tri-state pour pouvoir gérer
une configuration "manuelle".

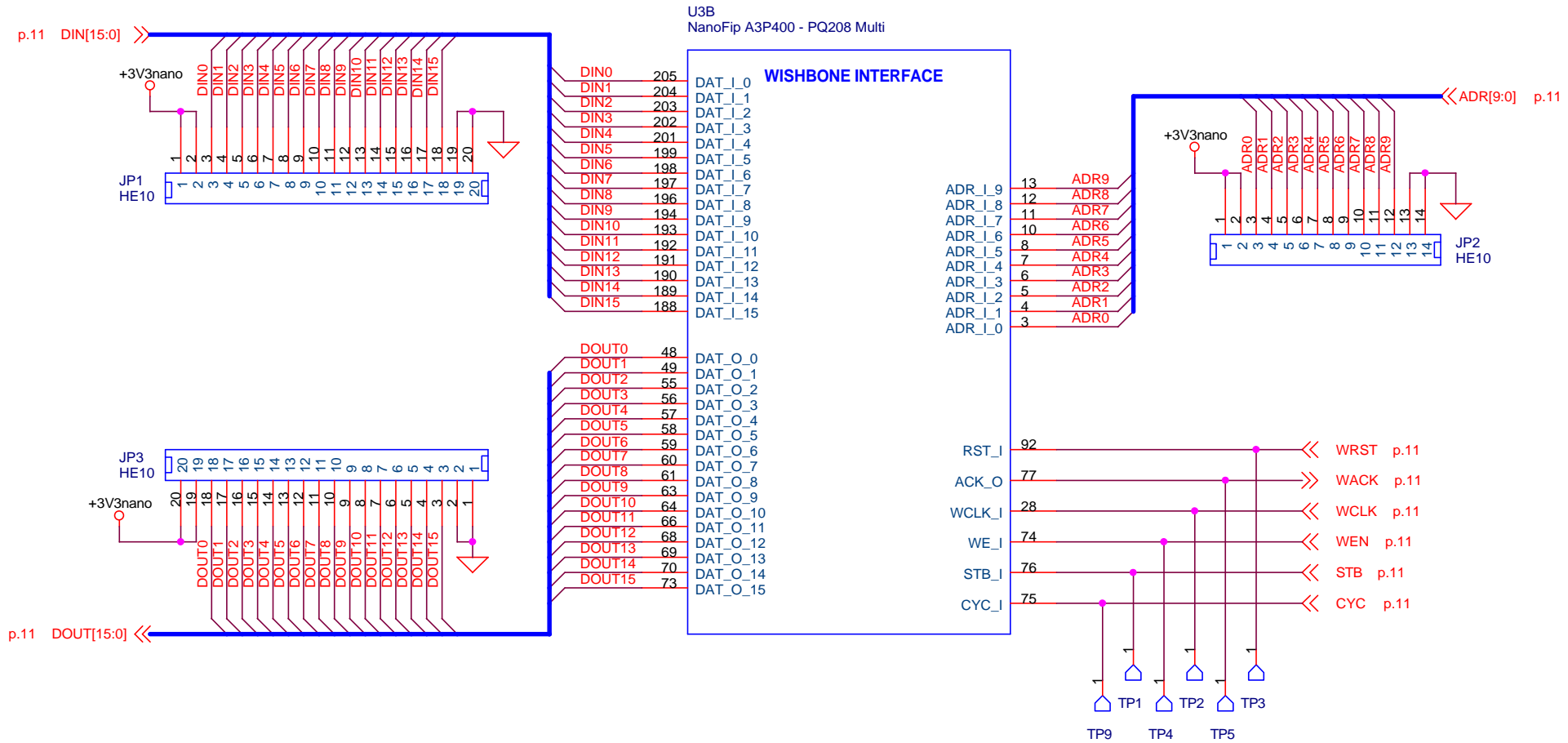


Si l'alimentation du NanoFip est coupée, les entrées
doivent être à 0.
Le FPGA de controle doit gérer des sorties tri-state

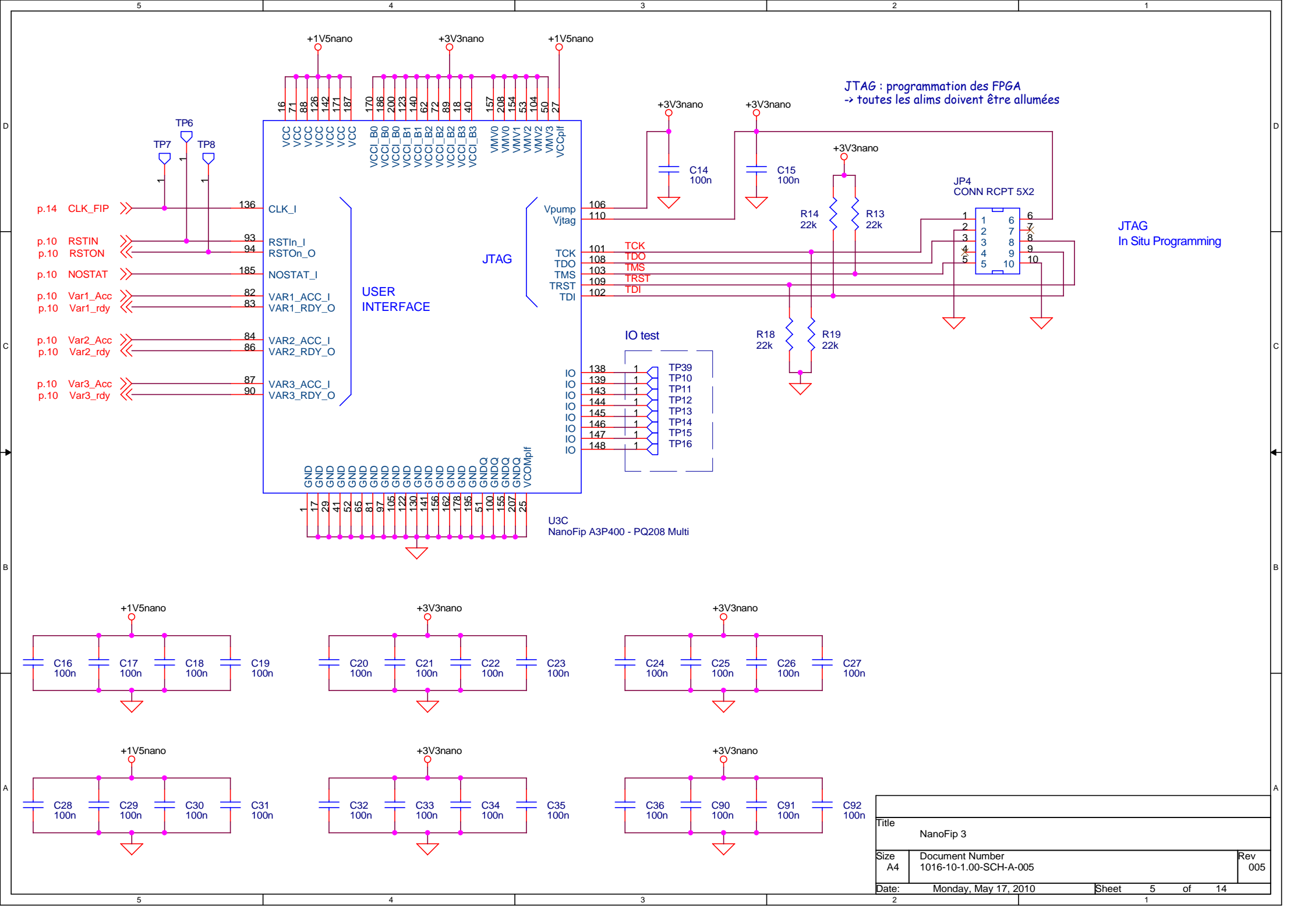
RATE_0	RATE_1	
0	0	31.25 kbps
0	1	1 Mbps
1	0	2.5 Mbps
1	1	reserved

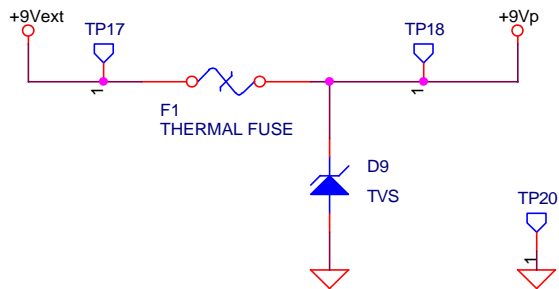
Title		
NanoFip 1		
Size	Document Number	Rev
A4	1016-10-1.00-SCH-A-005	005
Date:	Monday, May 17, 2010	Sheet 3 of 14

Si l'alimentation du NanoFip est coupée, les entrées
doivent être à 0.
Le FPGA de controle doit forcer ses sorties à 0

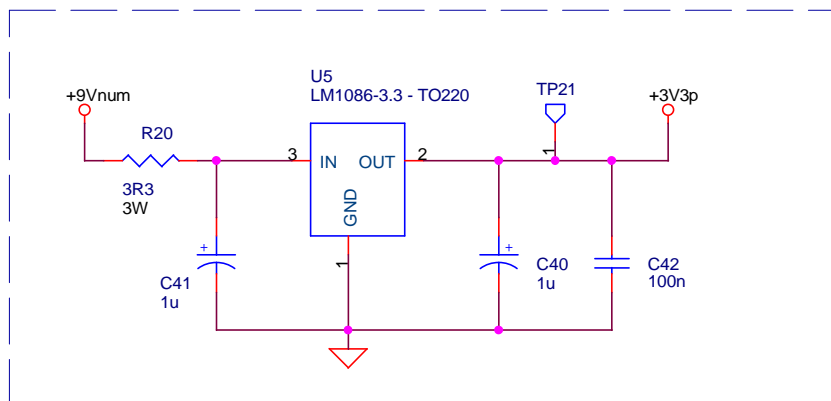


Title		
NanoFip 2		
Size	Document Number	Rev
A4	1016-10-1.00-SCH-A-005	005
Date:	Monday, May 17, 2010	Sheet 4 of 14

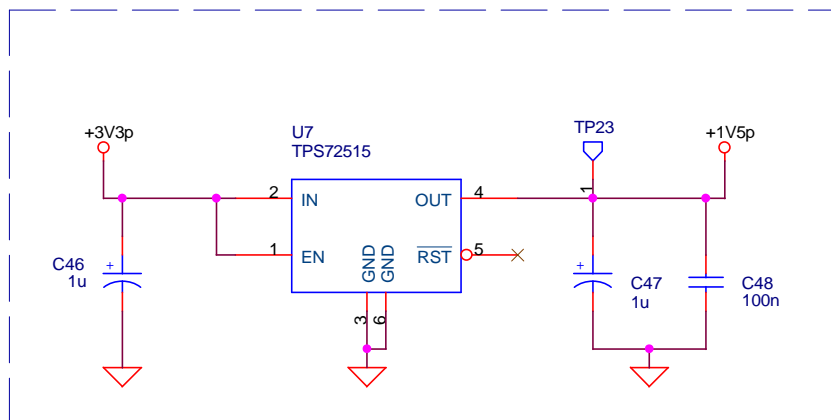




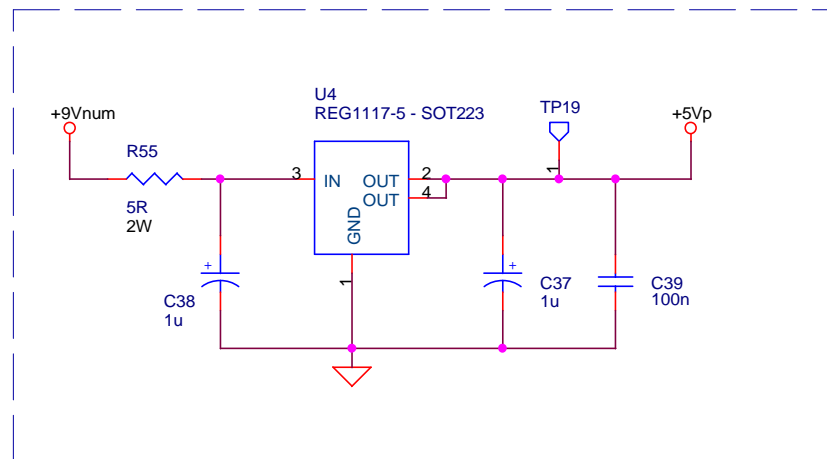
ALIMENTATION 3V3



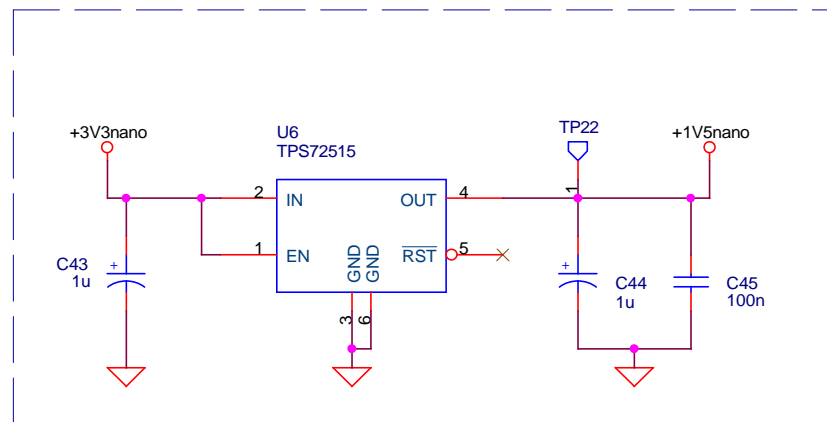
ALIMENTATION 1V5



ALIMENTATION 5V

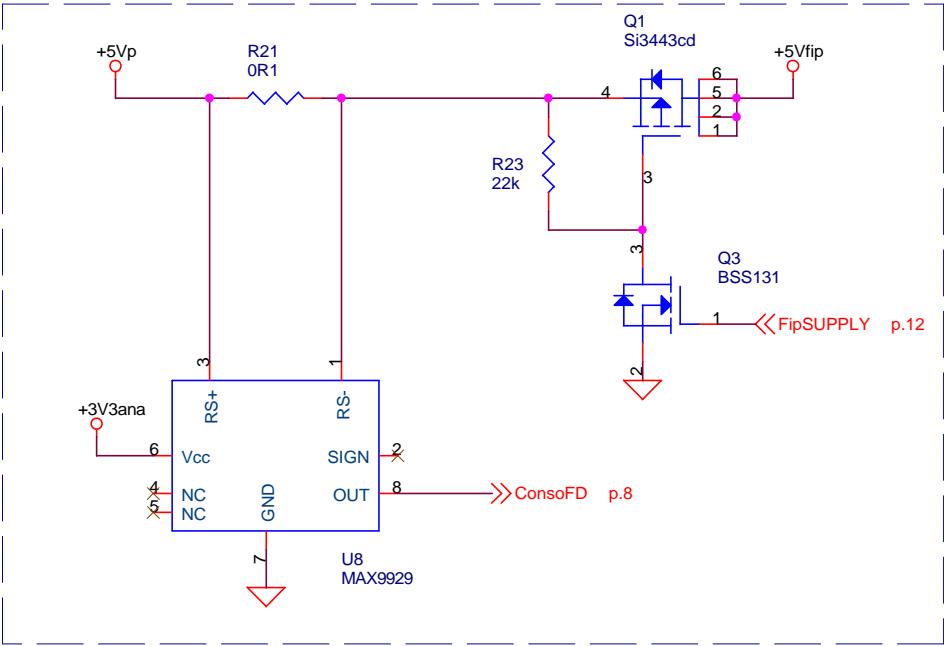


ALIMENTATION 1V5 (NanoFip)

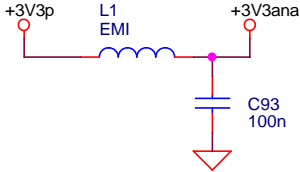
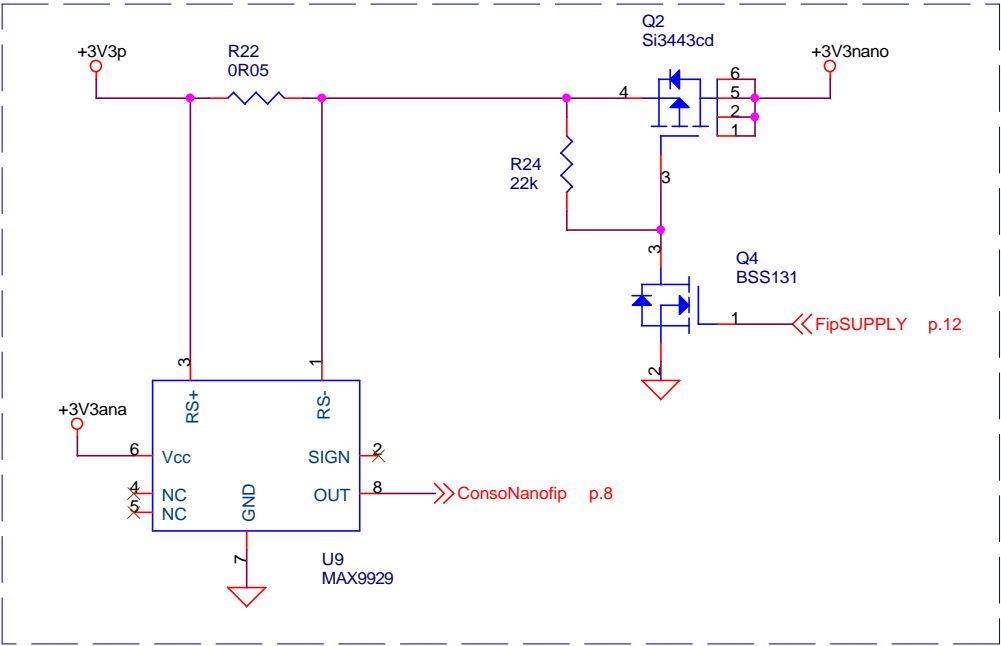


Title		
Alimentation		
Size A4	Document Number 1016-10-1.00-SCH-A-005	Rev 005
Date:	Monday, May 17, 2010	Sheet 6 of 14

Mesure consommation du Fieldrive

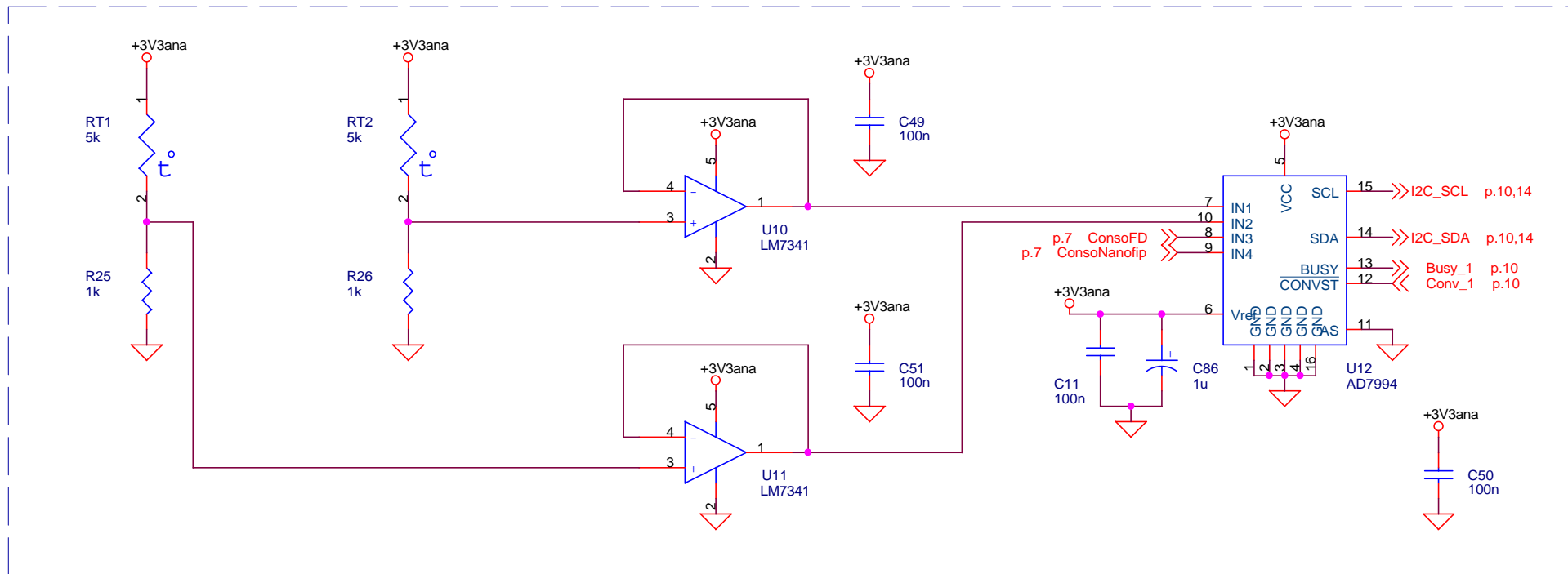


Mesure consommation du NanoFip

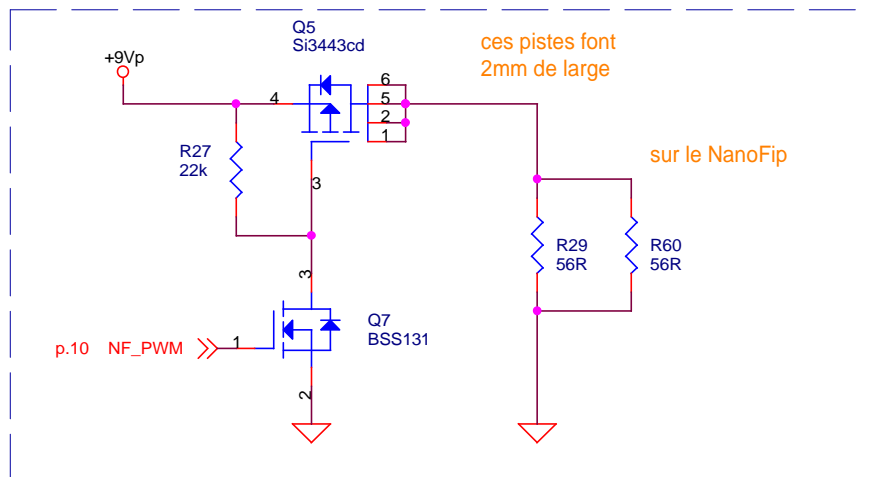


Title		
Current sense		
Size	Document Number	Rev
A4	1016-10-1.00-SCH-A-005	005
Date:	Monday, May 17, 2010	Sheet 7 of 14

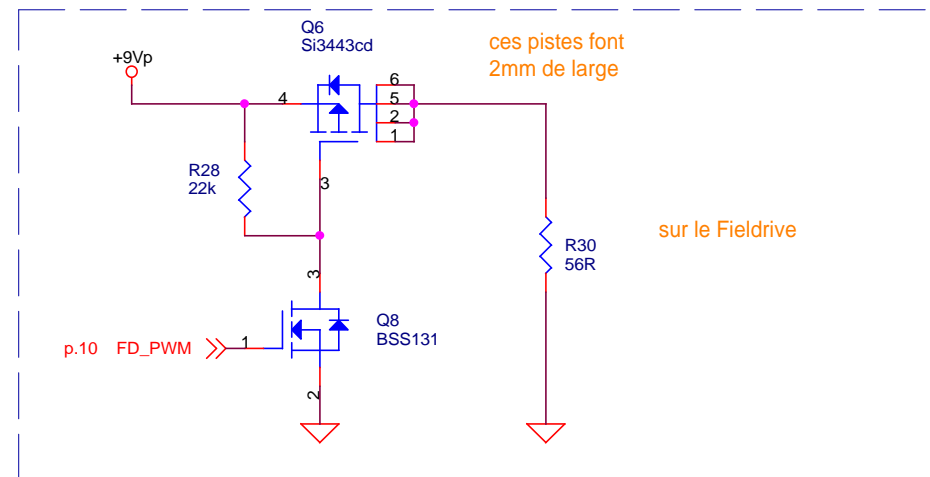
Mesure température Fieldrive & NanoFip



Commande chauffage NanoFip

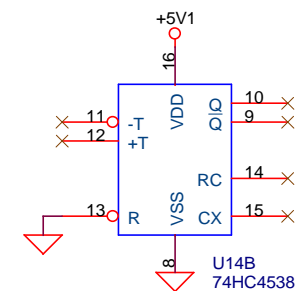
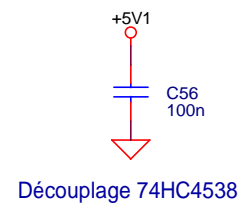
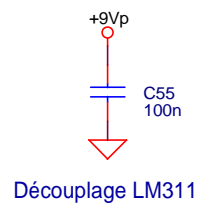
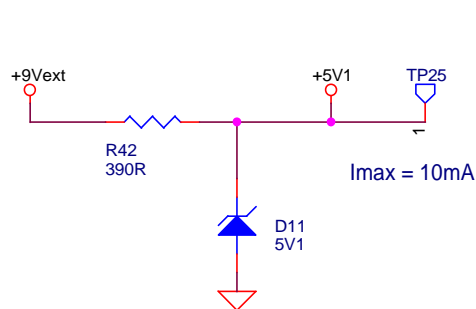
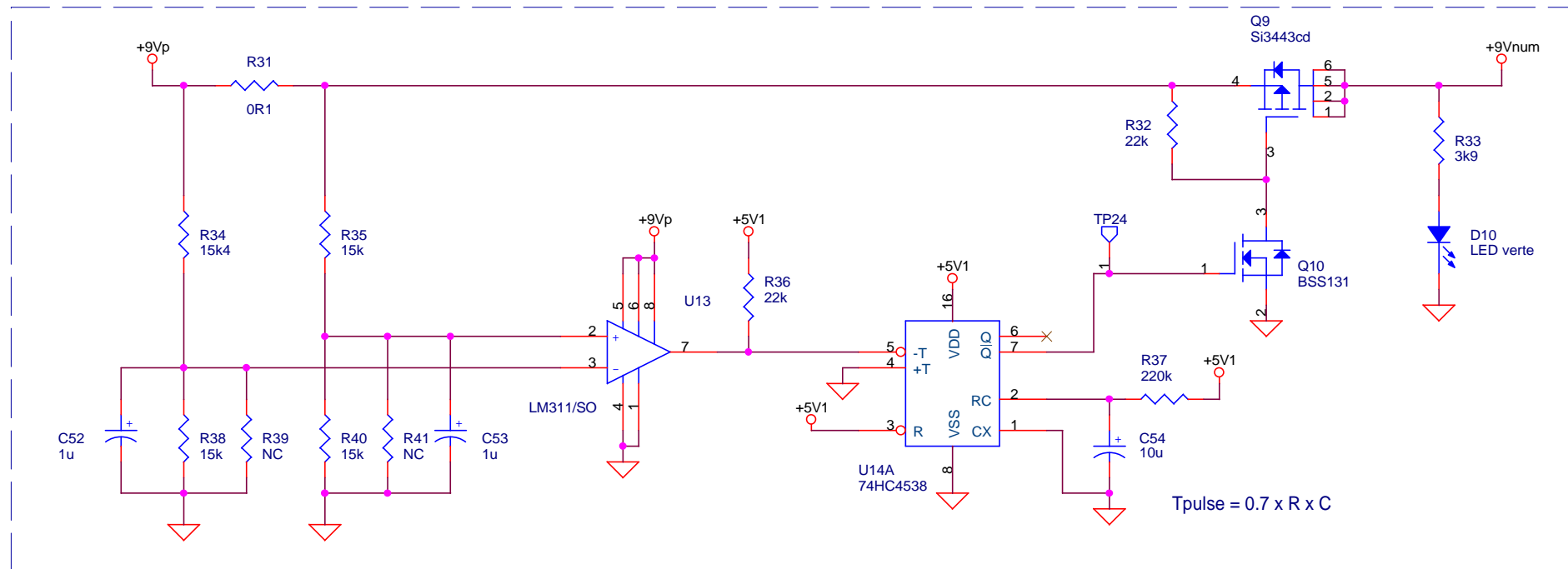


Commande chauffage Fieldrive

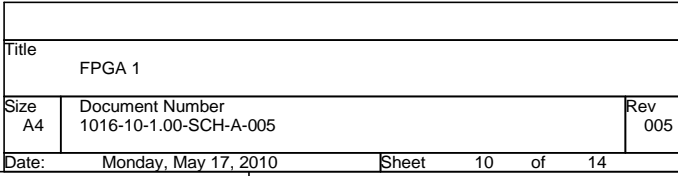


Title		
Temperature management		
Size	Document Number	Rev
A4	1016-10-1.00-SCH-A-005	005
Date:	Monday, May 17, 2010	Sheet 8 of 14

Protection Latch-up



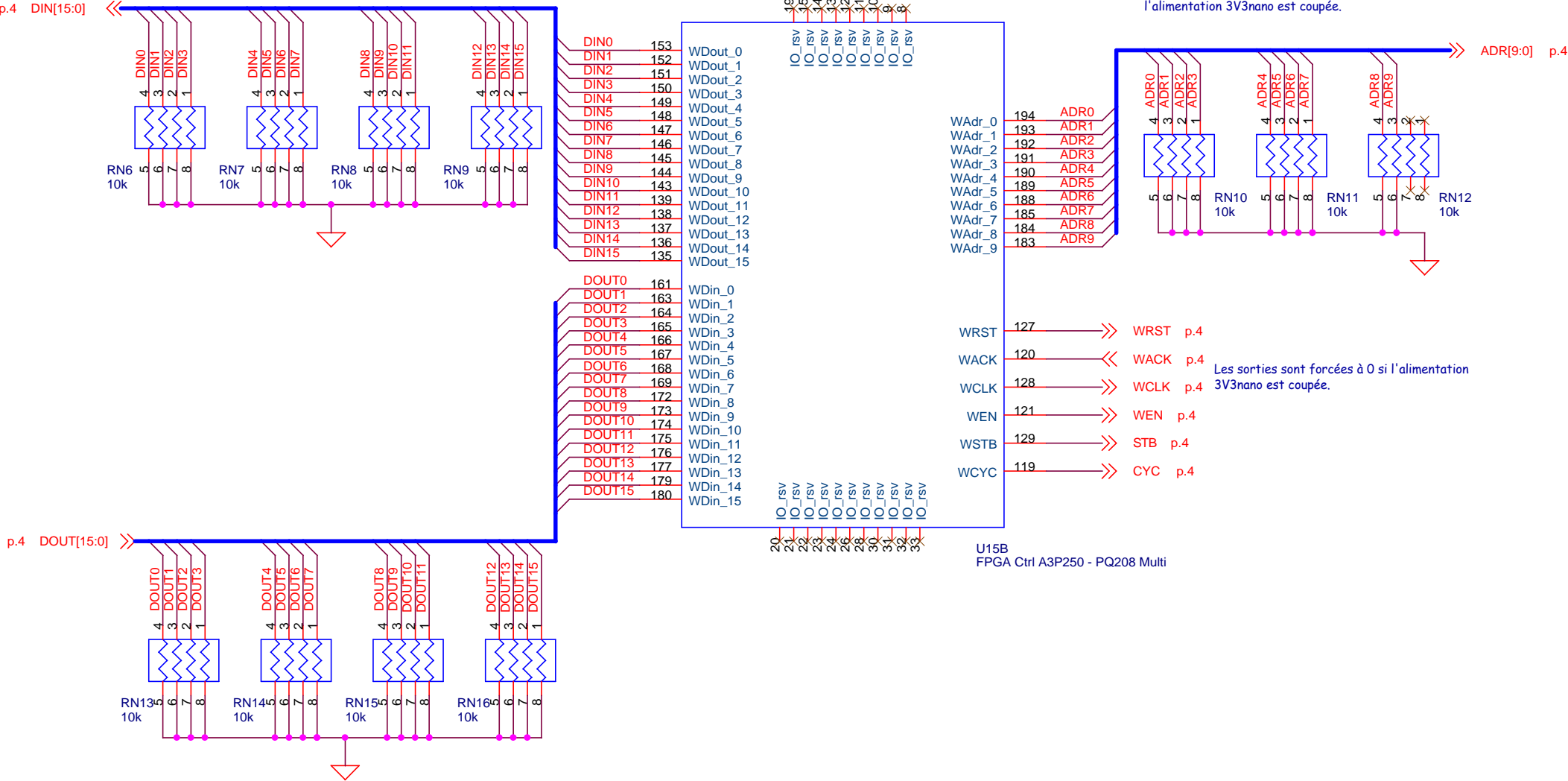
Title		
Latch-up		
Size	Document Number	Rev
A4	1016-10-1.00-SCH-A-005	005
Date:	Monday, May 17, 2010	Sheet 9 of 14



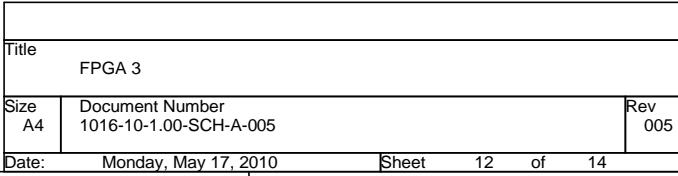
Controle WISHBONE

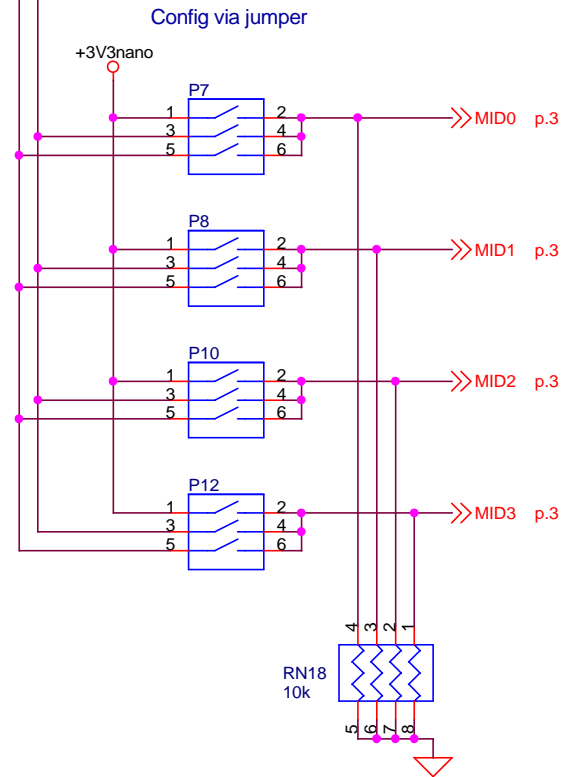
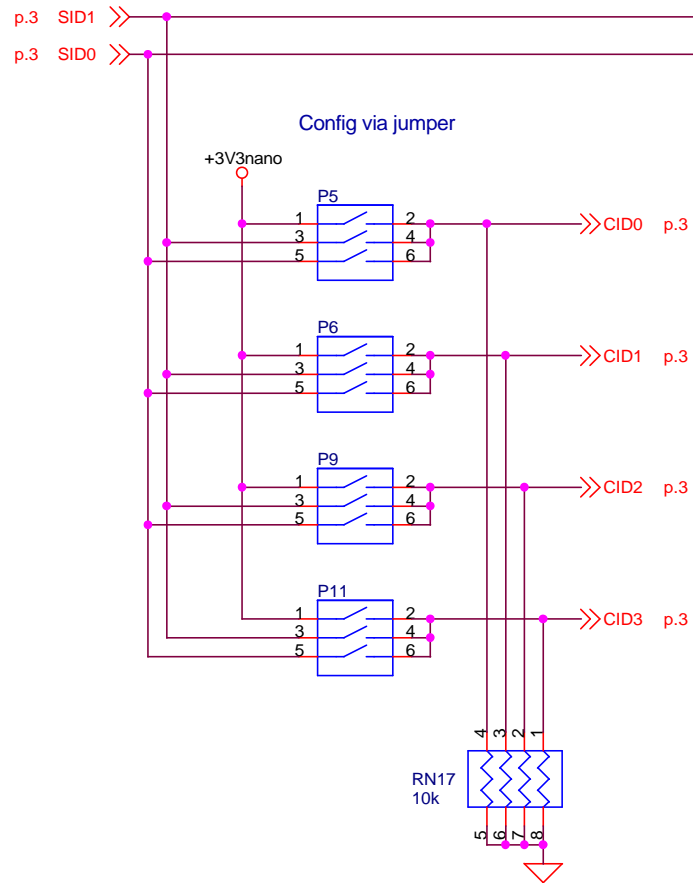
Le bus DIN doit être forcé à 0 si
l'alimentation 3V3nano est
coupée.

Le bus ADR doit être forcé à 0 si
l'alimentation 3V3nano est coupée.



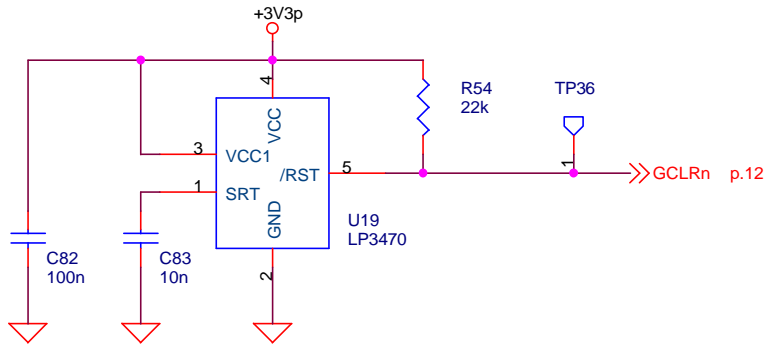
Title		
FPGA 2		
Size	Document Number	Rev
A4	1016-10-1.00-SCH-A-005	005
Date:	Monday, May 17, 2010	Sheet 11 of 14



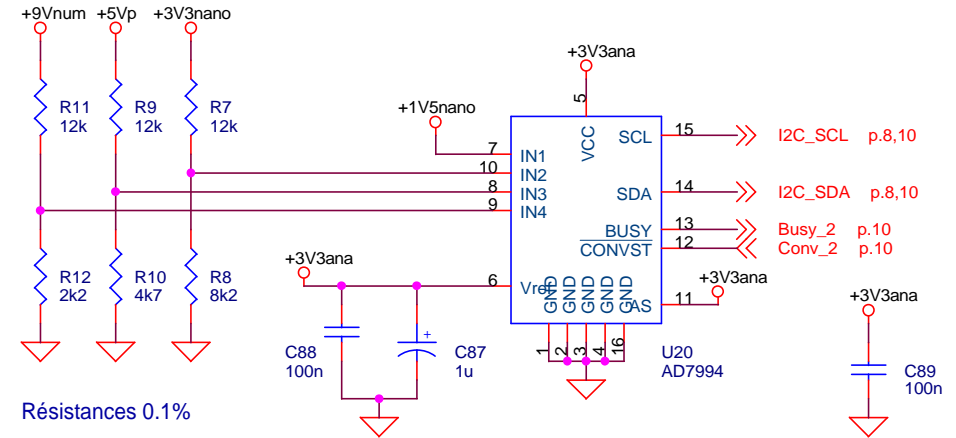


Title		
Configuration		
Size	Document Number	Rev
A4	1016-10-1.00-SCH-A-005	005
Date:	Monday, May 17, 2010	Sheet 13 of 14

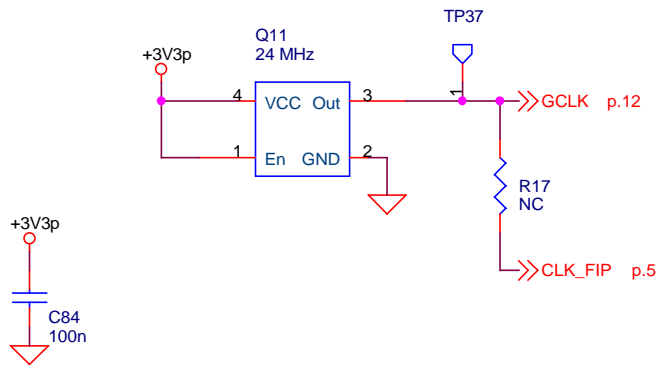
RESET



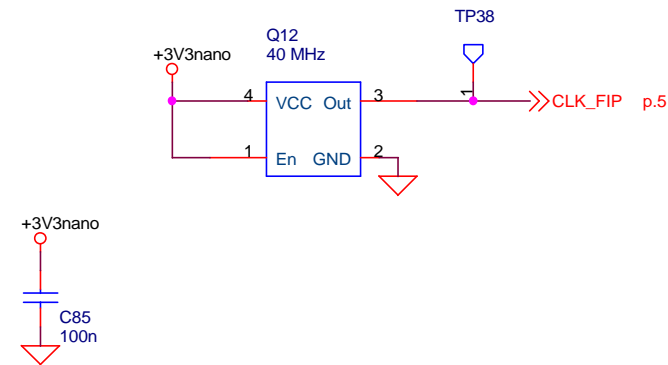
Mesure des tensions d'alimentation



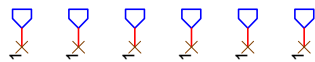
Horloge FPGA



Horloge NanoFip (40 MHz)



FIX1 FIX2 FIX3 FIX4 FIX5 FIX6



Percages de fixation

Title		
Divers		
Size	Document Number	Rev
A4	1016-10-1.00-SCH-A-005	005
Date:	Monday, May 17, 2010	Sheet 14 of 14