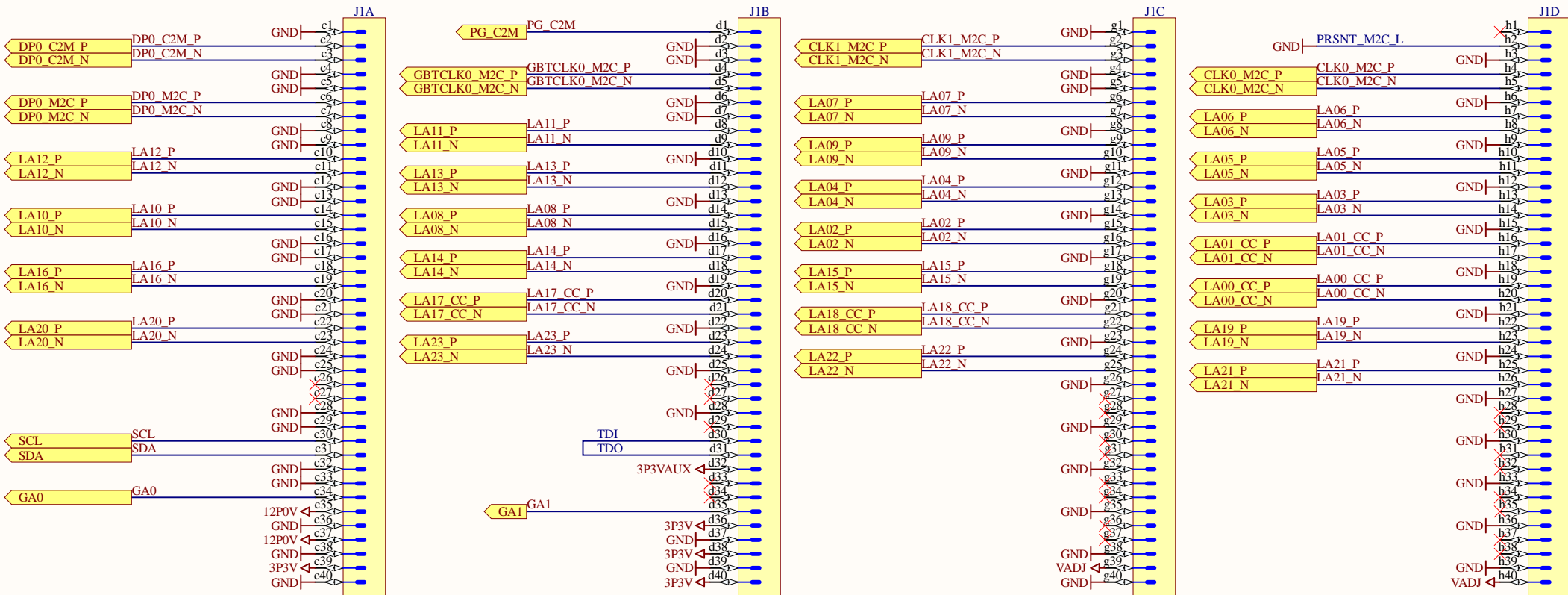


Blue comment area = directives for layout

Yellow comment area = general comment on design



Stand-off near FMC connector must be connected to FRONT_PANEL1 and FRONT_PANEL2

LA00* to LA23* are swappable

FTG1 FTG2 FTG3 FTG4 FTG5 FTG6

Project/Equipment FmcDIO16chTTLa		Designer mcatin	
Document		Drawn by mcatin	11/04/2009
BE-CO-HT		Check by vanderby	11/26/2009
		Last Mod. mcatin	12.05.2013
CERN		File fmc_HV_fmc_connector.SchDoc	
		Print Date 07.10.2021 12:09:51	Sheet 1 of 5
European Organization for Nuclear Research CH-1211 Genève 23 - Switzerland		EDA-02064-V1-0	
		Size A4	Rev -

A

B

C

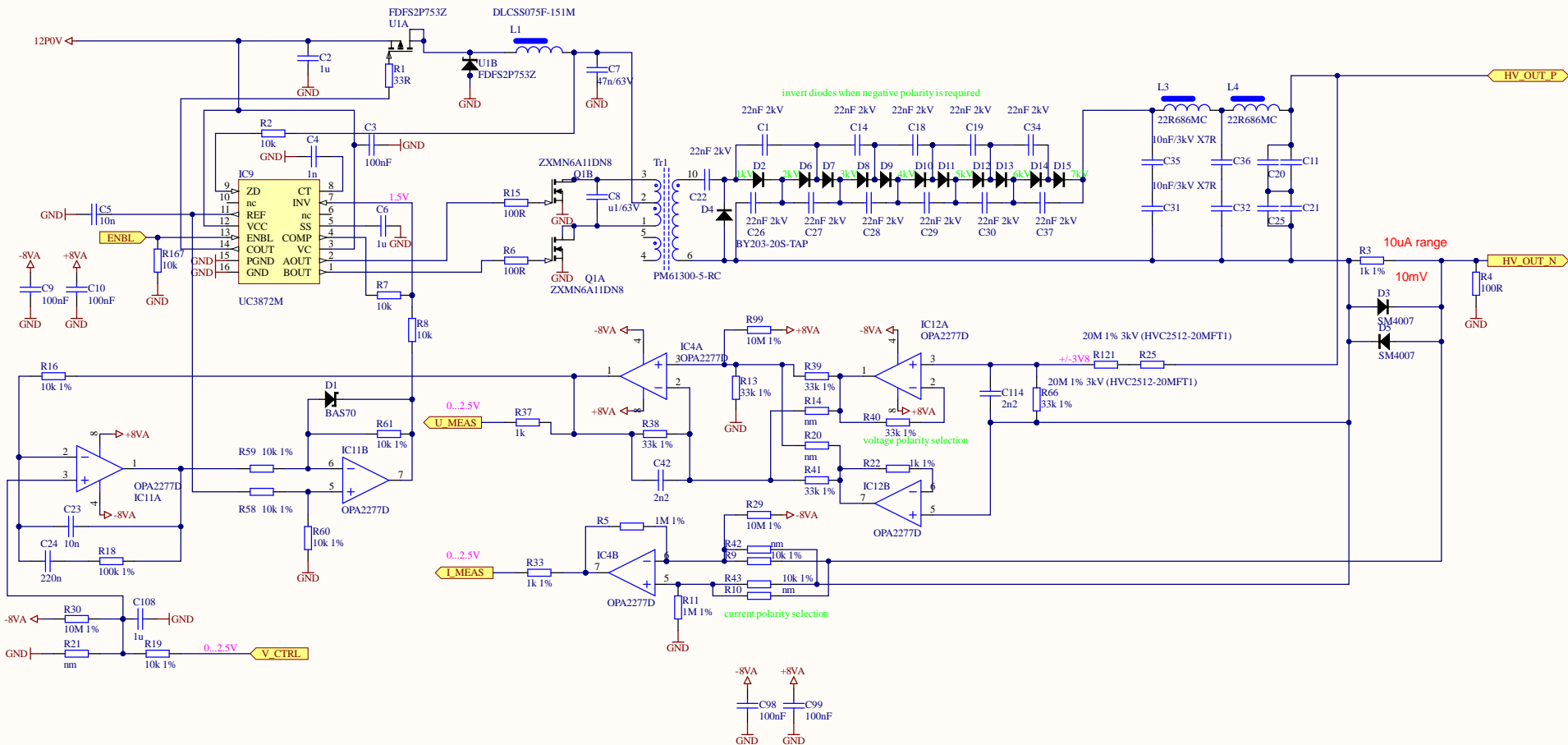
D

A

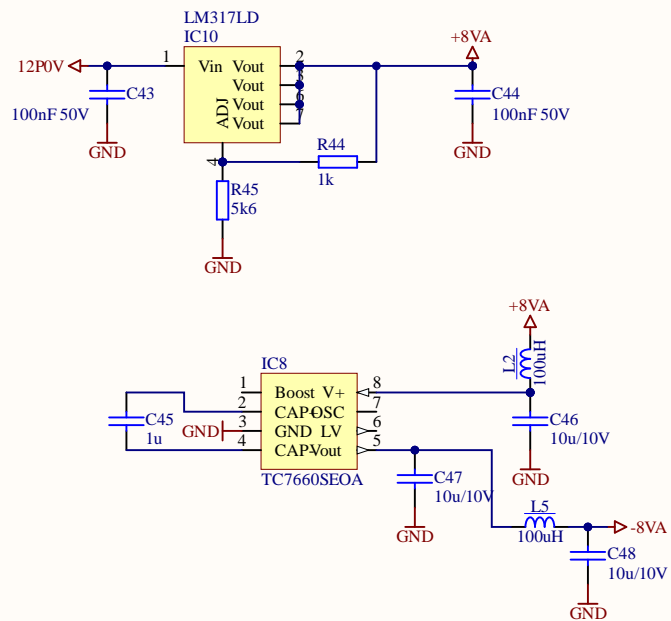
B


C

D



Title		
Size	Number	Revision
A3		
Date:	10.07.2021	Sheet of
File:	D:\Dropbox\HV_gen.SchDoe	Drawn By:



Title			Altium Limited L3, 12a Rodborough Rd Frenchs Forest NSW Australia 2086	
Size: A4	Number:	Revision:		
Date: 07.10.2021	Time: 12:09:52	Sheet of		
File: D:\Dropbox\DESIGNS\FMC boards\FMC HV\FMC_HV_PCB\Supply.SchDoc				

