

A

A

B

B

C

C

D

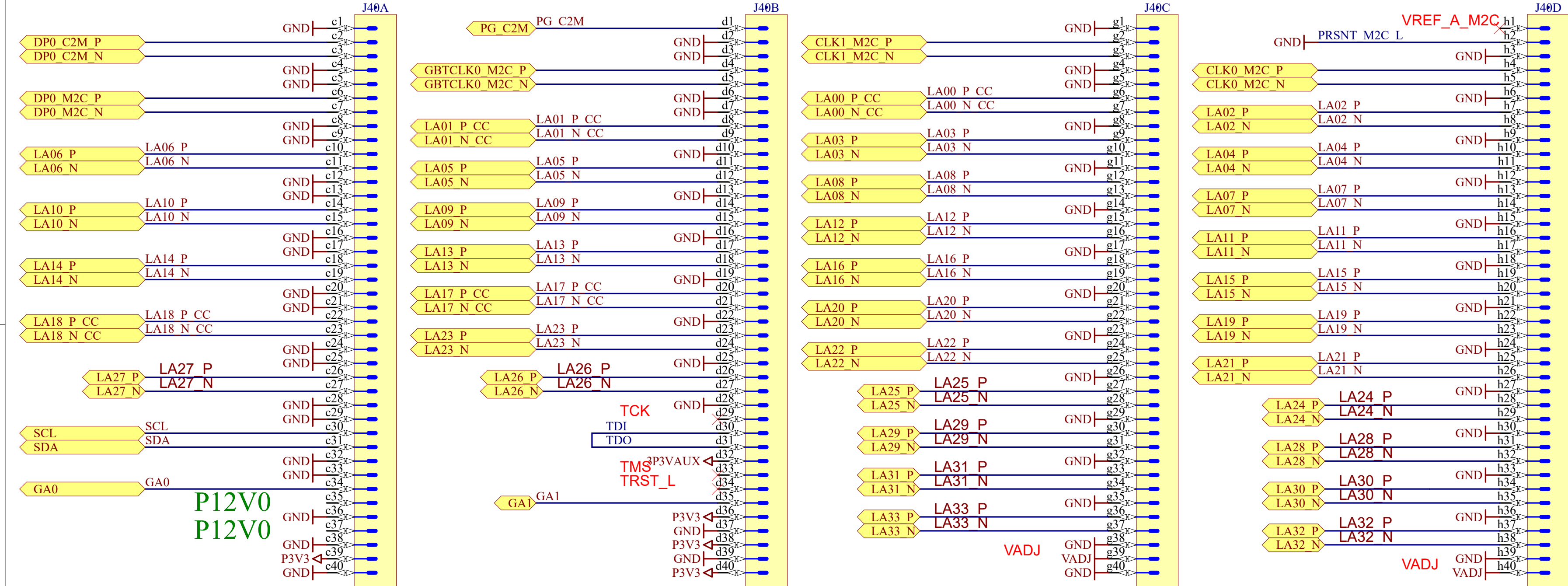
D

E

E

Blue comment area = directives for layout

Yellow comment area = general comment on design



Stand-off near FMC connector must be connected to FRONT_PANEL1 and FRONT_PANEL2

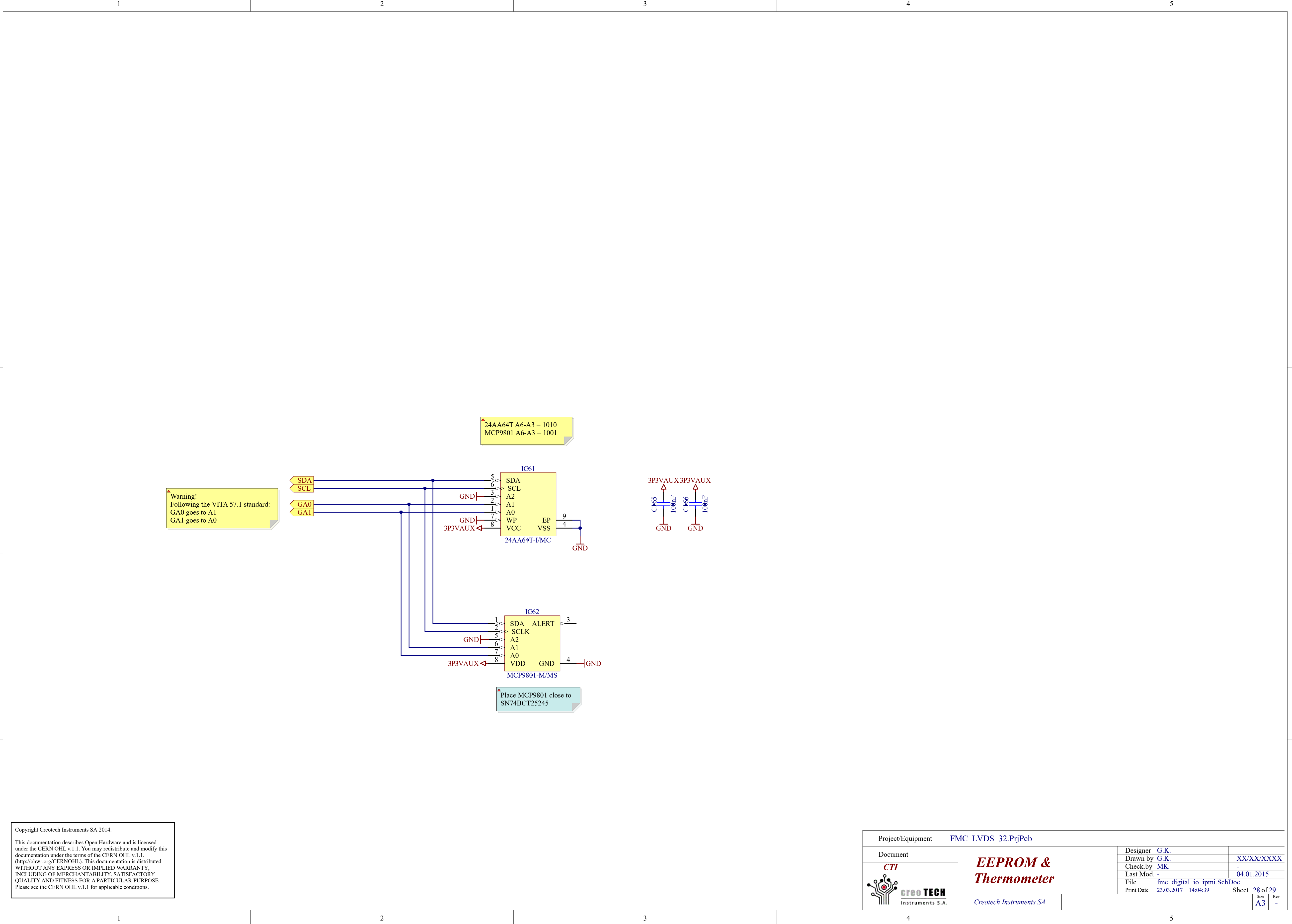
LA00* to LA23* are swappable

FTG7 FTG8 FTG9 FT610 FT611 FT612

Copyright Creotech Instruments SA 2014.

This documentation describes Open Hardware and is licensed under the CERN OHL v.1.1. You may redistribute and modify this documentation under the terms of the CERN OHL v.1.1. (<http://ohwr.org/CERNOHL>). This documentation is distributed WITHOUT ANY EXPRESS OR IMPLIED WARRANTY, INCLUDING OF MERCHANTABILITY, SATISFACTORY QUALITY AND FITNESS FOR A PARTICULAR PURPOSE. Please see the CERN OHL v.1.1 for applicable conditions.

Project/Equipment		FMC_LVDS_32.PrjPcb	
Document		Designer	G.K.
<div><div>CTI</div><div>creo tech</div><div>Instruments S.A.</div></div> <div>FMC connector</div> <div>Creotech Instruments SA</div>		Drawn by	G.K.
		Check by	MK
		Last Mod.	-
		File	fmc_digital_io_fmc_connector.SchDoc
Print Date		23.03.2017 14:04:38	Sheet 26 of 29
		Size	A3
		Rev	-



Copyright Creotech Instruments SA 2014.

This documentation describes Open Hardware and is licensed under the CERN OHL v.1.1. You may redistribute and modify this documentation under the terms of the CERN OHL v.1.1. (<http://ohwr.org/CERNOHL>). This documentation is distributed WITHOUT ANY EXPRESS OR IMPLIED WARRANTY, INCLUDING OF MERCHANTABILITY, SATISFACTORY QUALITY AND FITNESS FOR A PARTICULAR PURPOSE. Please see the CERN OHL v.1.1 for applicable conditions.

Project/Equipment		FMC_LVDS_32.PrjPcb			
Document					
 CTI  creoTECH Instruments S.A.	<i>EEPROM & Thermometer</i> <i>Creotech Instruments SA</i>		Designer	G.K.	
			Drawn by	G.K.	XX/XX/XXXX
			Check by	MK	-
			Last Mod.	-	04.01.2015
			File	fmc_digital_io_ipmi.SchDoc	
			Print Date	23.03.2017 14:04:39	Sheet 28 of 29
				Size	A3
				Rev	

