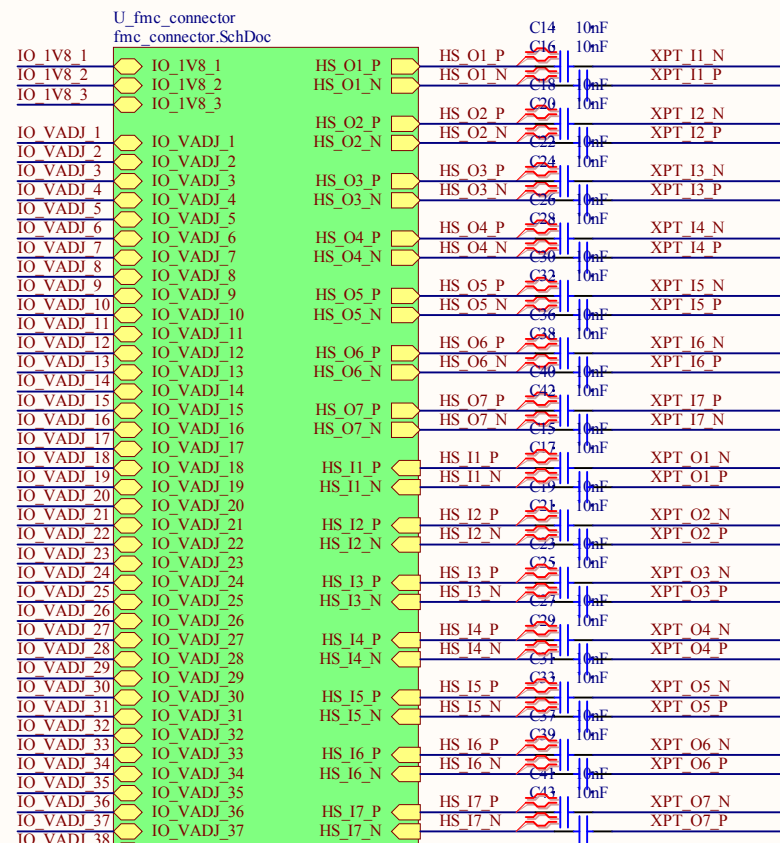
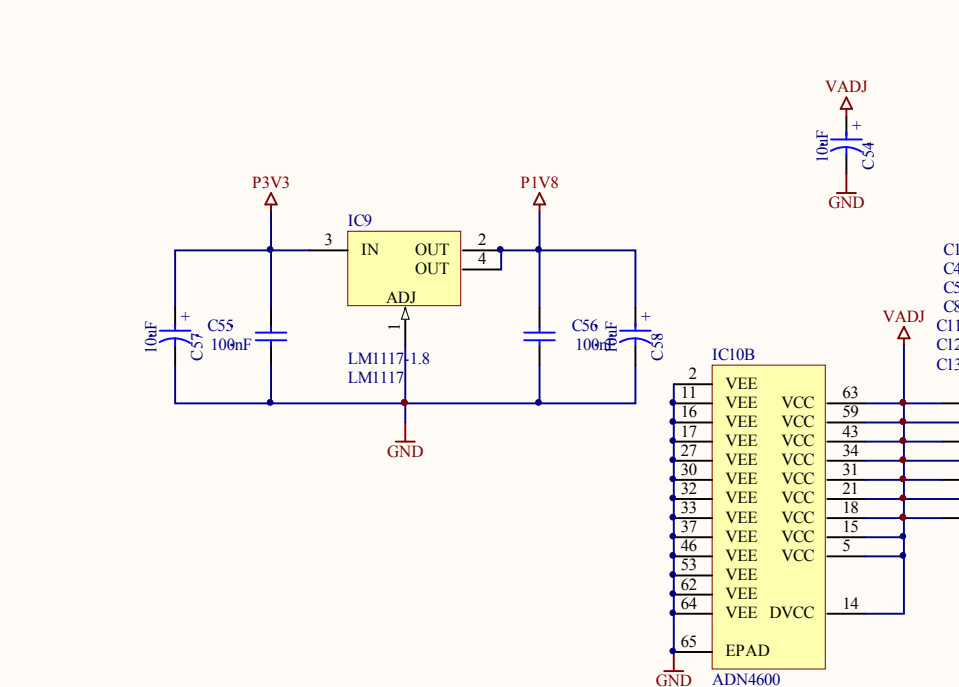
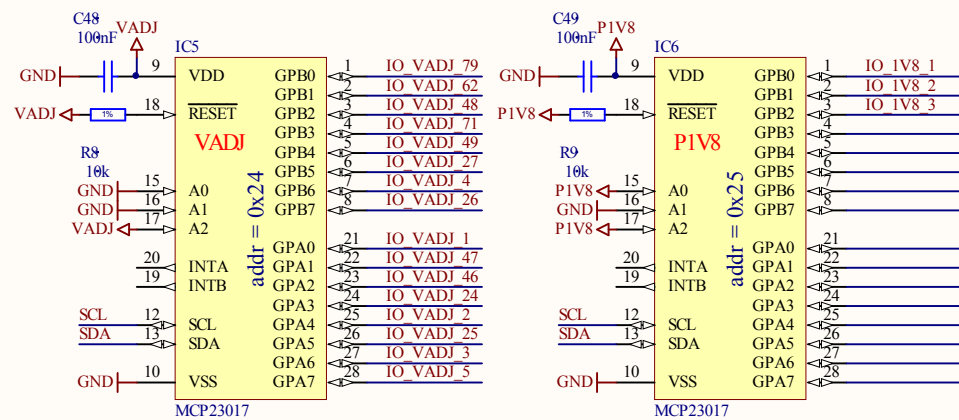
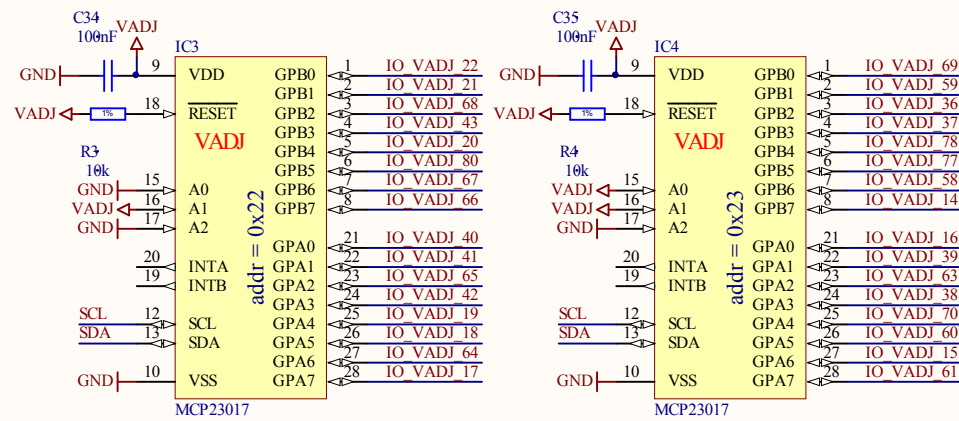
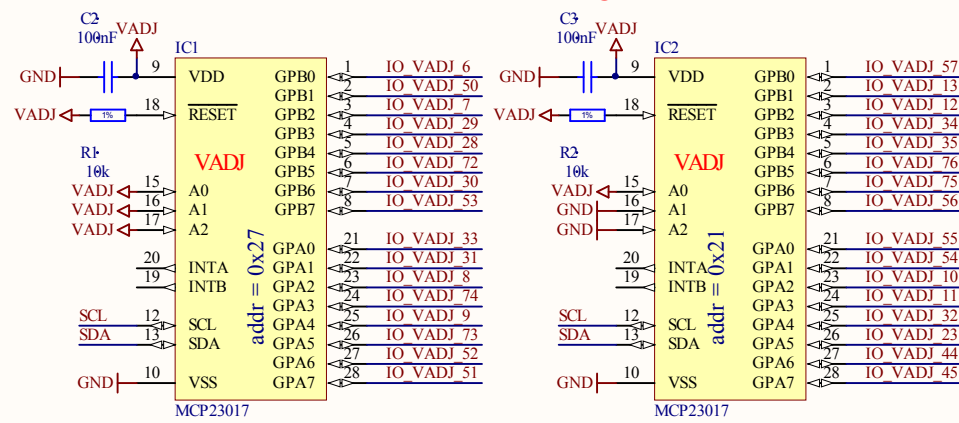
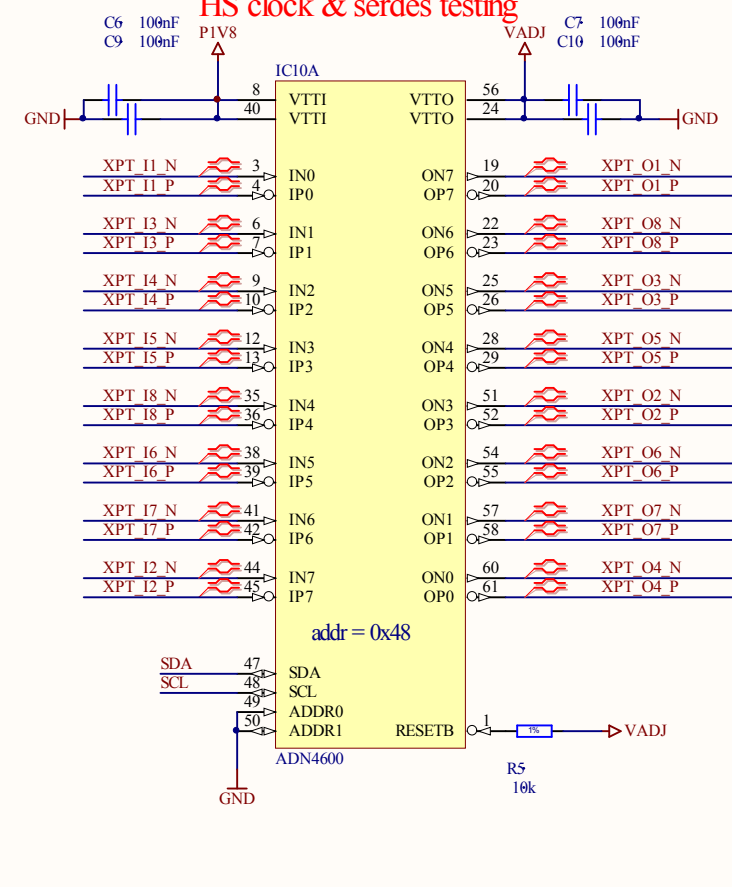


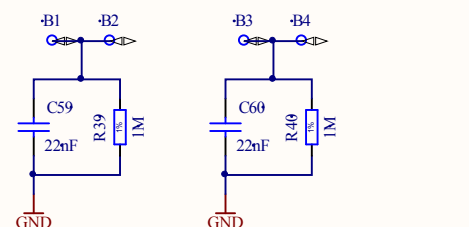
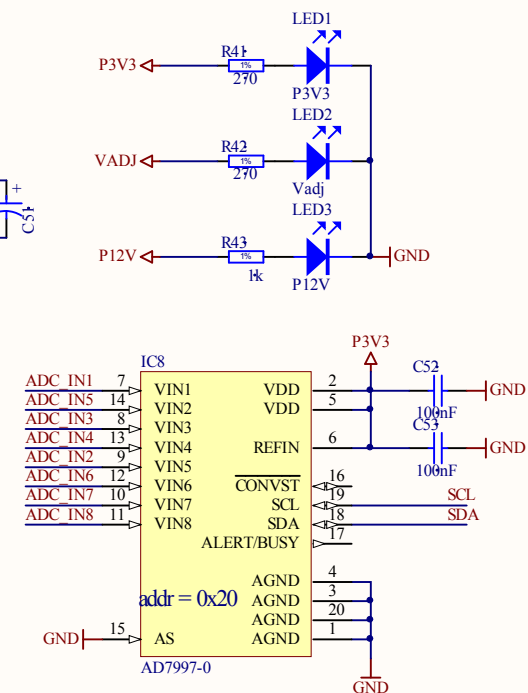
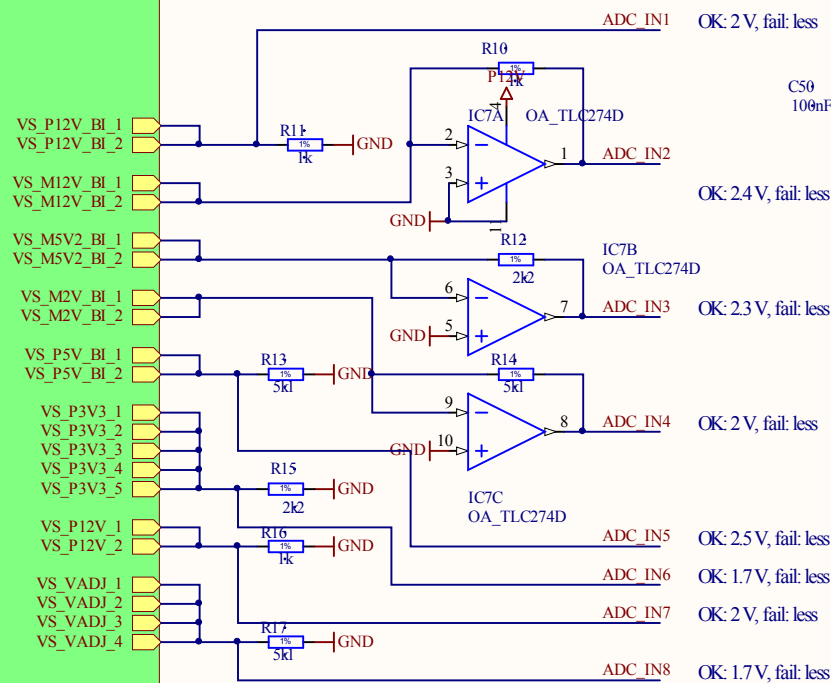
I/O Line testing



HS clock & serdes testing

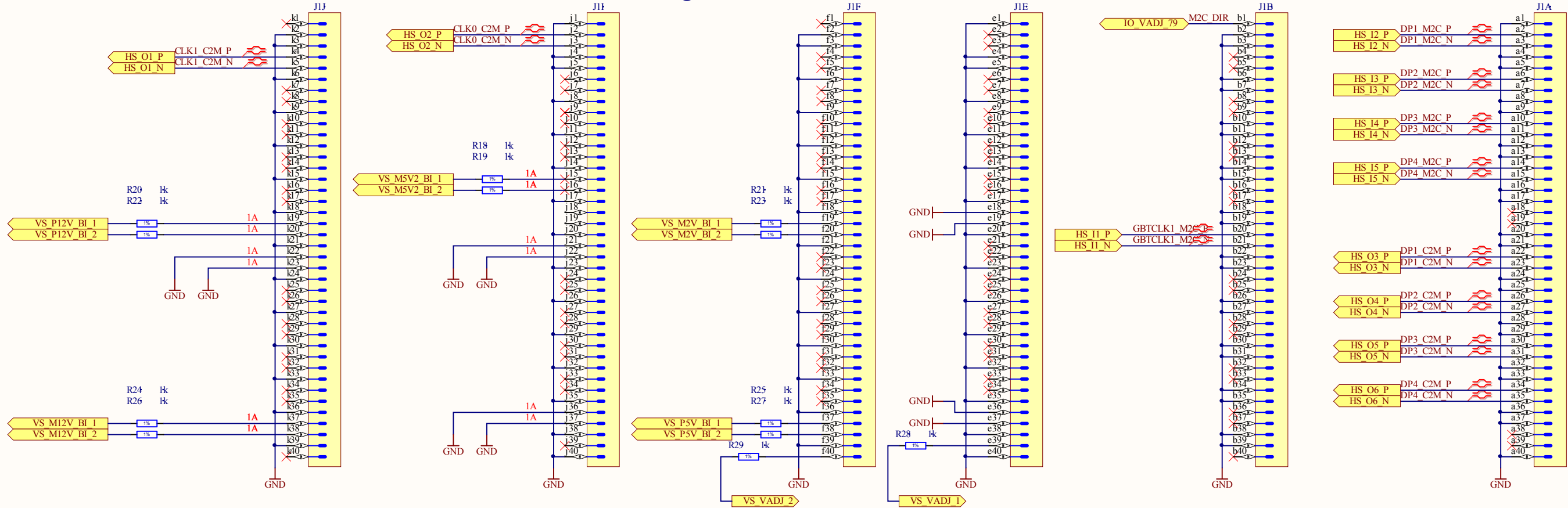


Power pin testing

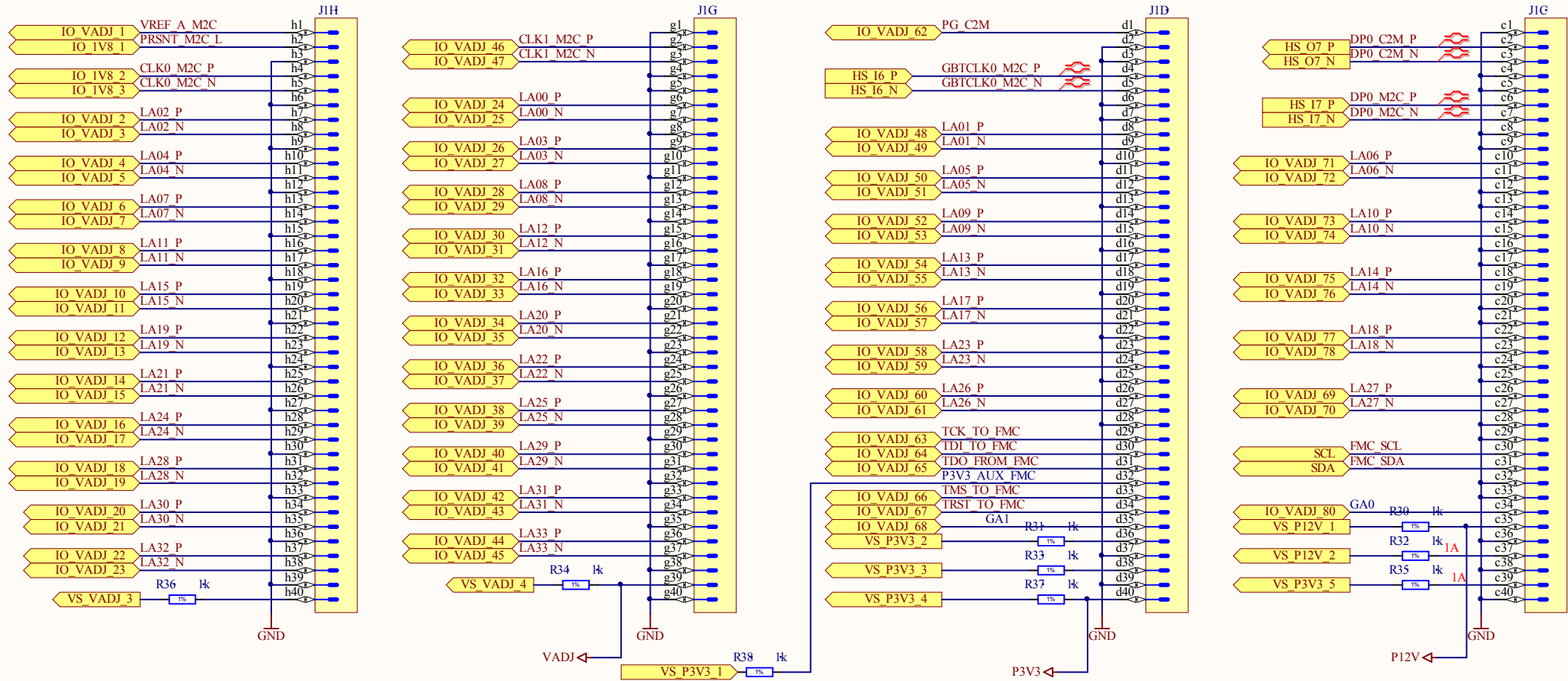


Title			FMC Carrier testboard - main schematic		
Size	Number			Revision	
A3				1.0	
Date:	1/6/2011			Sheet of	
File:	C:\altium-projects\fmccarrier\fmccarrier_tester.sch			Drawn By:	

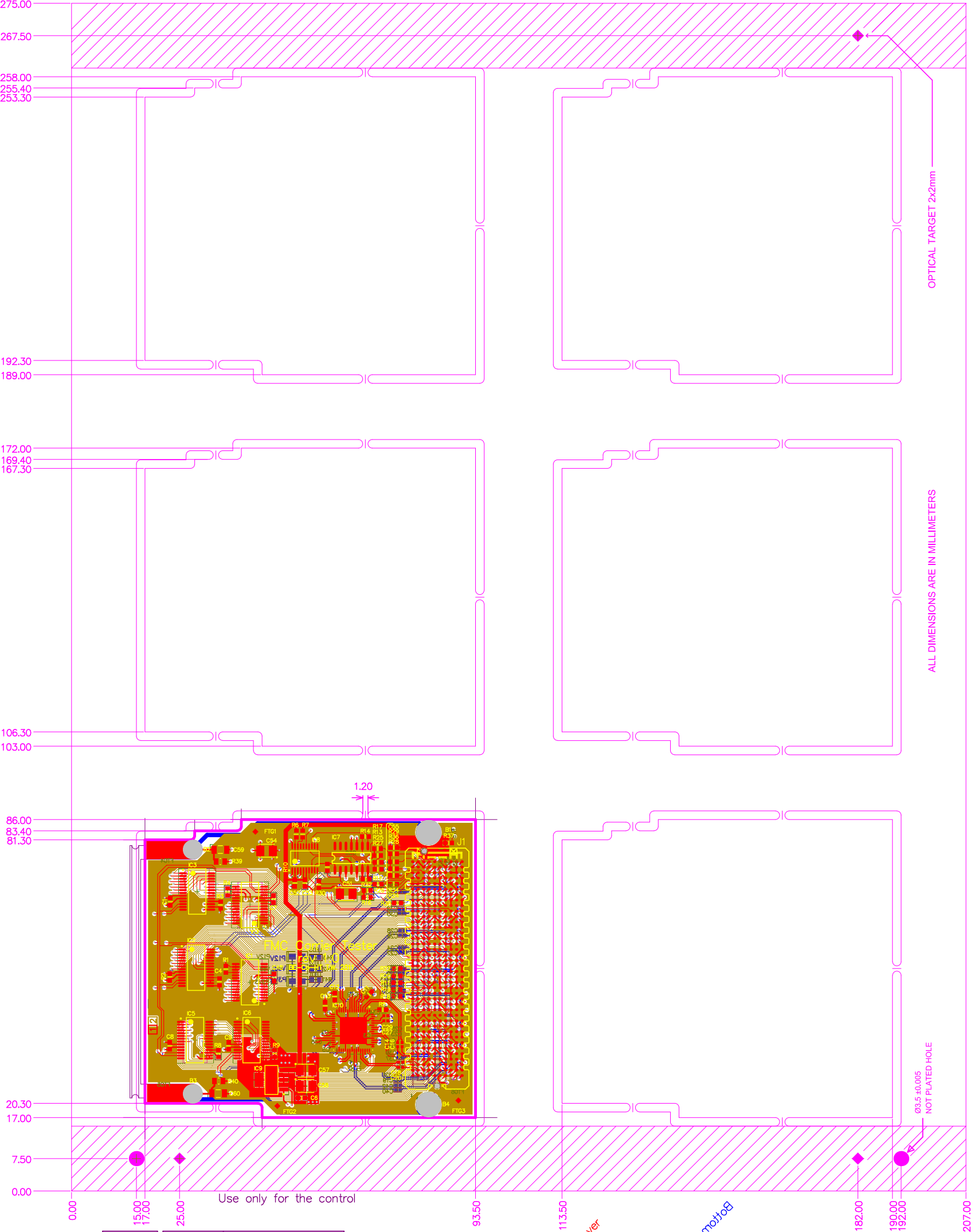
High Pin Count Rows



Low Pin Count Rows



Title		
FMC Carrier testboard - HPC FMC connector		
Size	Number	Revision
A3		1.0
Date:	1/6/2011	Sheet of
File:	C:\altium-projects\...\fmc_connector.SchDoc	Drawn By:



Number	?
Drawn By	TW
DATE	06-01-2010
MOD.	-

Print Date 1/6/2011 5:23:37 PM

Mechanical 11 vphsv0 mott08

Top Layer

Bottom Layer

1 6