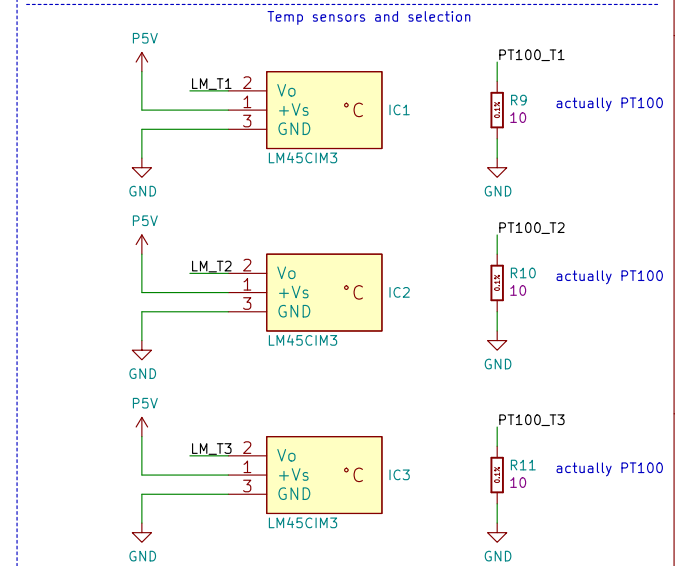
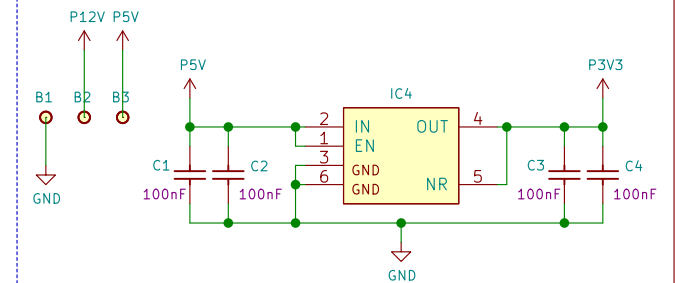
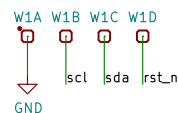
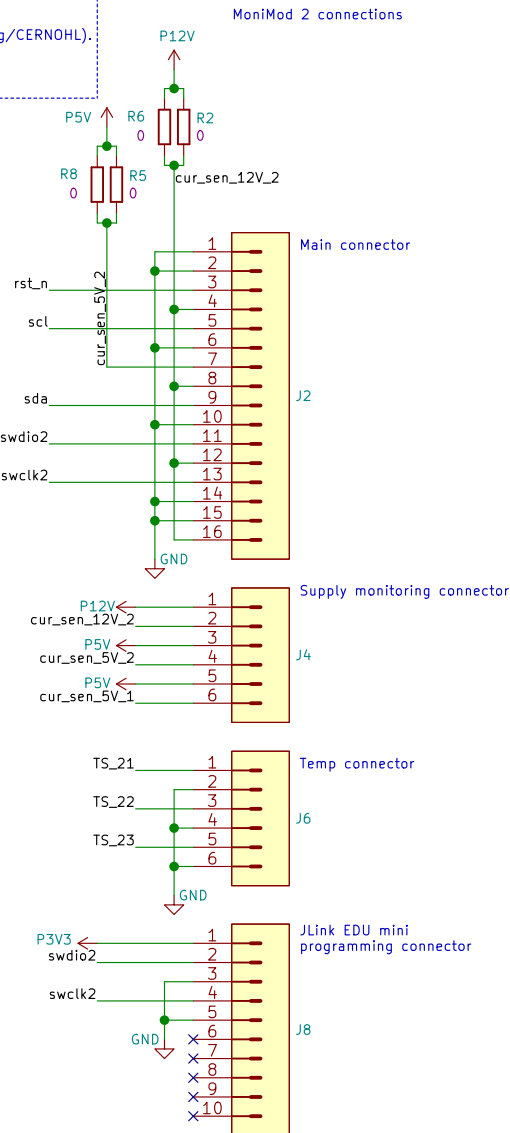
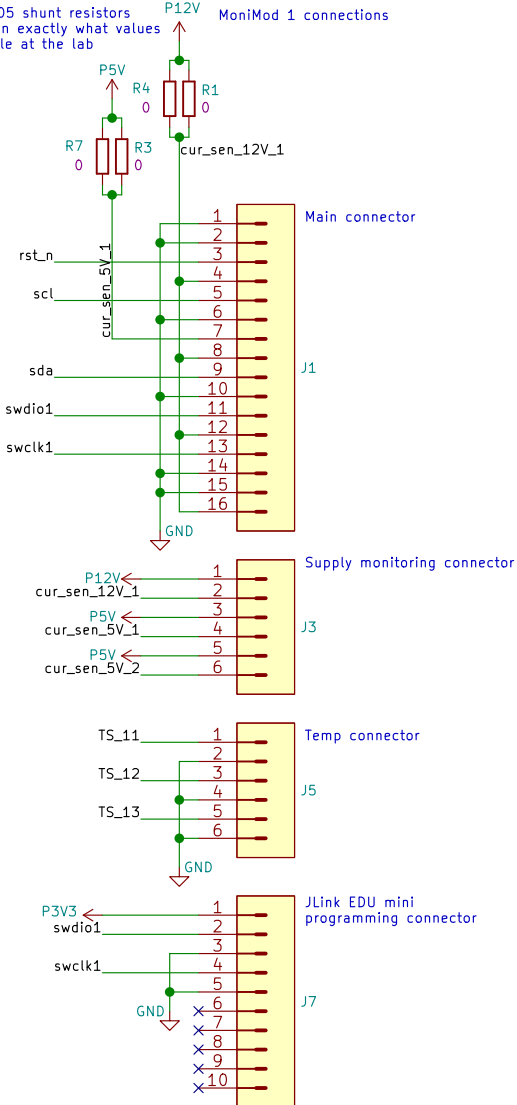
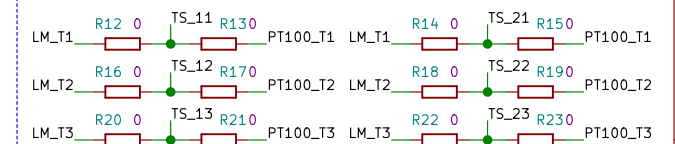


Copyright CERN 2019–2020.
This documentation describes Open Hardware and is licensed under the CERN OHL v.1.2.
You may redistribute and modify this under the terms of the CERN OHL v.1.2. (<http://ohwr.org/CERNOHL>).
This documentation is distributed ANY EXPRESS OR IMPLIED WARRANTY,
INCLUDING OF MERCHANTABILITY, SATISFACTORY AND FITNESS FOR A PARTICULAR PURPOSE.
Please see the CERN OHL v.1.2 for applicable conditions.

Allow for 2x 0805 shunt resistors
as it's not known exactly what values
we have available at the lab



CAUTION: only one of the two
MoniMods can be connected
to a sensor



Designer: C. Gentsos

CERN, European Organization for Nuclear Research, CH–1211 Genève 23 – Switzerland
Sheet: /
File: breakout_board.sch
Title: MoniMod Breakout Board
Size: A4 Date: 2020–06–22
KiCad E.D.A. kicad 5.1.6
Rev:
Id: 1/1