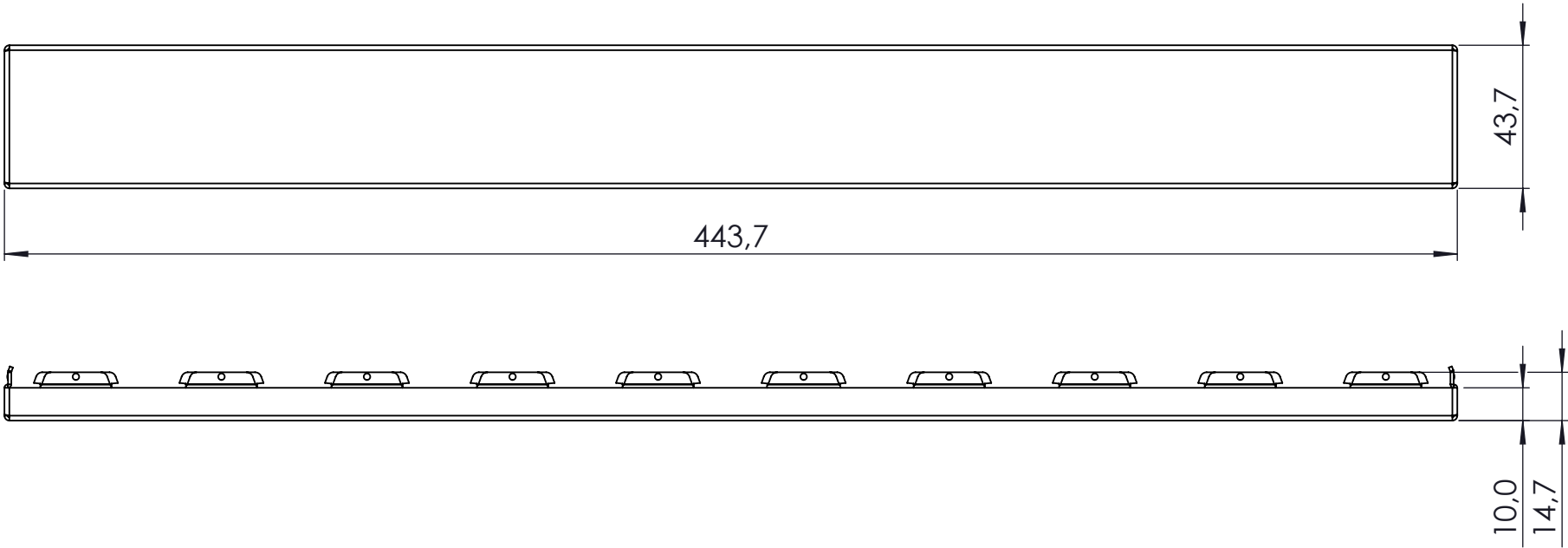
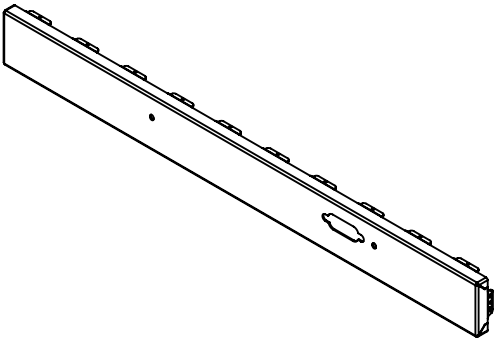
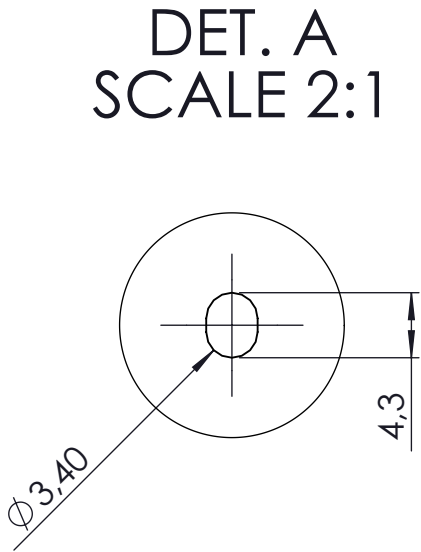
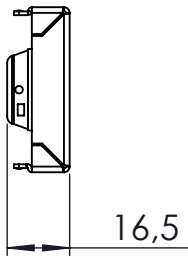
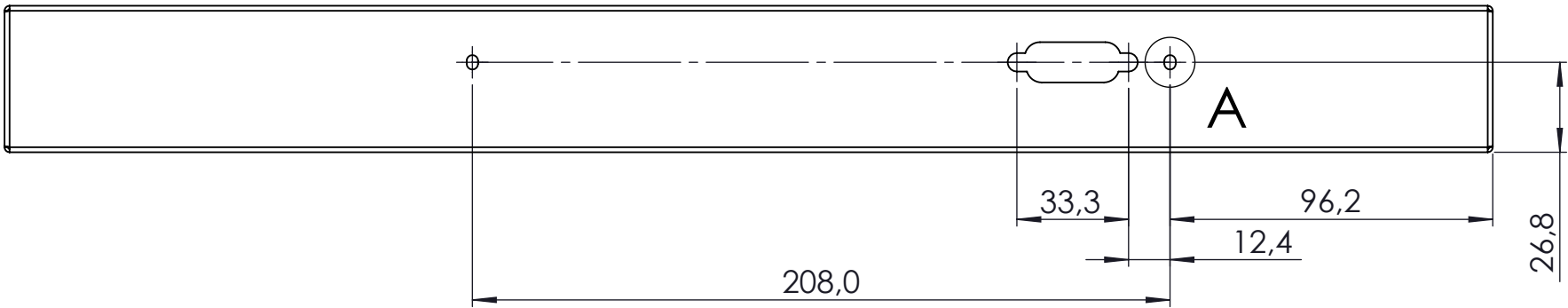


PREFAB VIEW SCHROFF 14821-105
<https://schroff.nvent.com/en-de/products/enc14821-105>
MATERIAL THICKNESS 1MM



FRONT VIEW



Copyright CERN 2021. License under OHLv2-W.

This source describes Open Hardware and is licensed under the CERN-OHLW v2
You may redistribute and modify this documentation and make products
using it under the terms of the CERN-OHL-W v2 (<https://cern.ch/cern-ohl>).
This documentation is distributed WITHOUT ANY EXPRESS OR IMPLIED
WARRANTY, INCLUDING OF MERCHANTABILITY, SATISFACTORY QUALITY
AND FITNESS FOR A PARTICULAR PURPOSE. Please see the CERN-OHL-W v2
for applicable conditions.

Upper assembly number		Upper assembly name		Revision		Date	
				A		07.09.2021	
General tolerance class for non-tolerated dimensions		Material		Coating		Quantity	Mass
IT12		ALUMINUM					
Designed by		J.MOSKWA	07.09.2021	Scale	Format	Sheets	
Drawn by		J.MOSKWA	07.09.2021	1:2	A3	1 OF 1	
Checked by							
Approved by							
		Part name				Part number	
		FRONT_PANEL_V4					