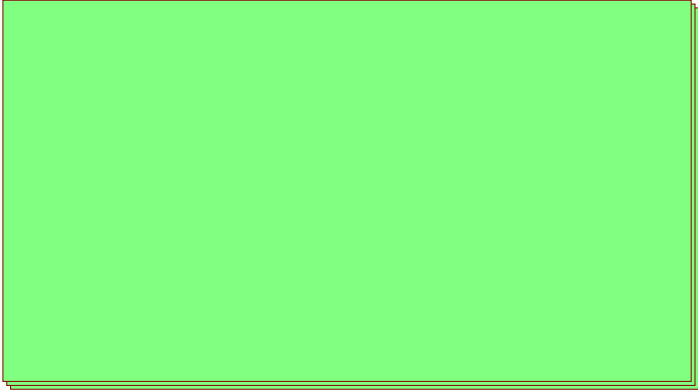


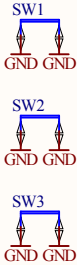
REPEAT(CHANNEL,1,3)  
channel.SchDoc



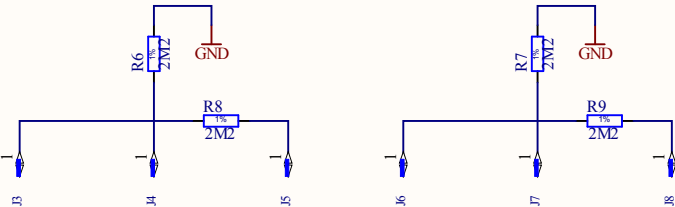
Power supplies  
power\_supplies.SchDoc




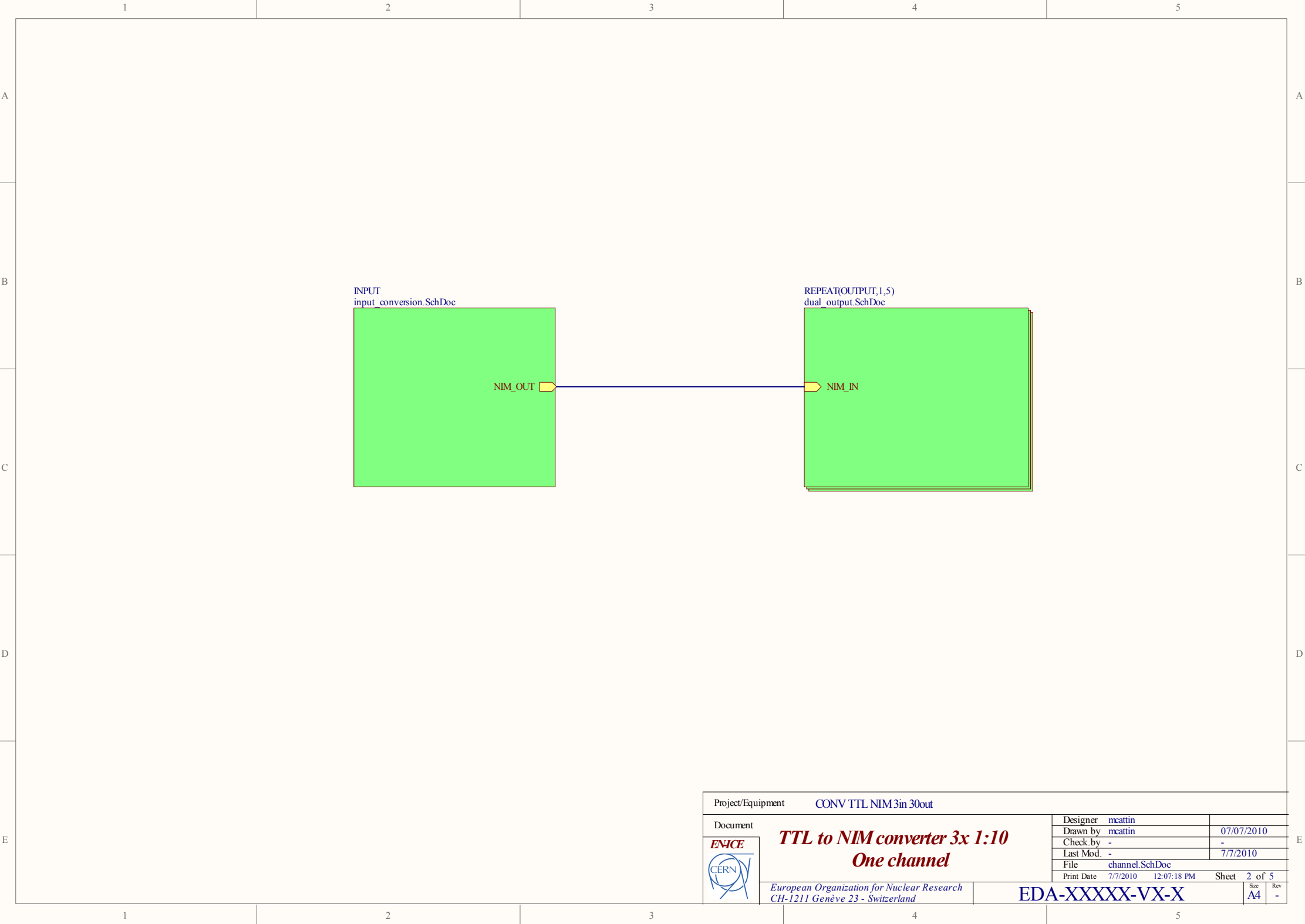
GND test points



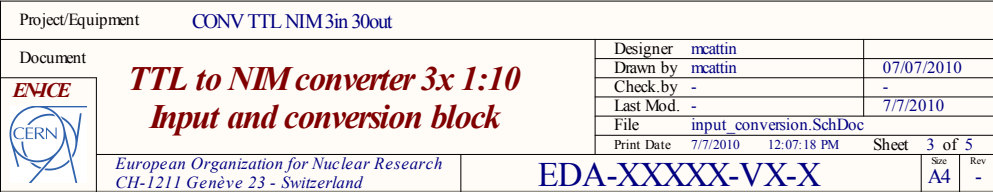
ESD discharge strips (top and bottom of the card)

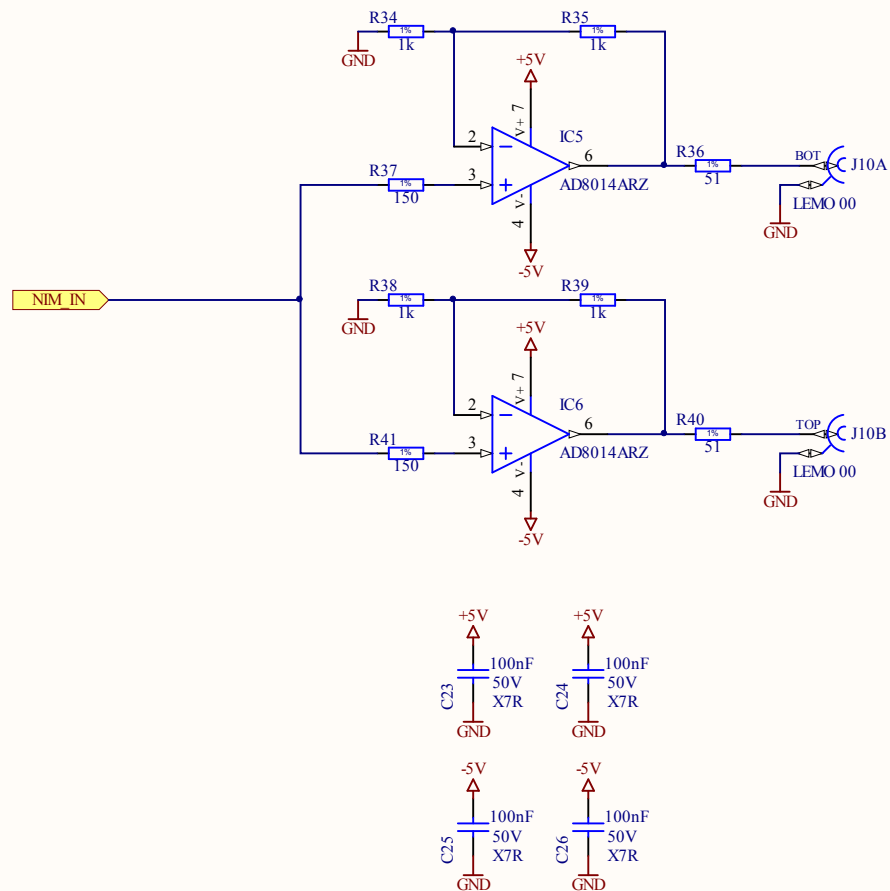



Project/Equipment		CONV TTL NIM3in 30out		
<div>Document</div> <div></div>	<div>TTL to NIM converter 3x 1:10</div> <div>Top level</div> <div>European Organization for Nuclear Research</div> <div>CH-1211 Genève 23 - Switzerland</div>		Designer	mcatin
			Drawn by	mcatin
			Check by	-
			Last Mod.	-
			File	top.SchDoc
Print Date		7/7/2010	12:07:18 PM	Sheet 1 of 5
EDA-XXXXX-VX-X			Size	A4
			Rev	-



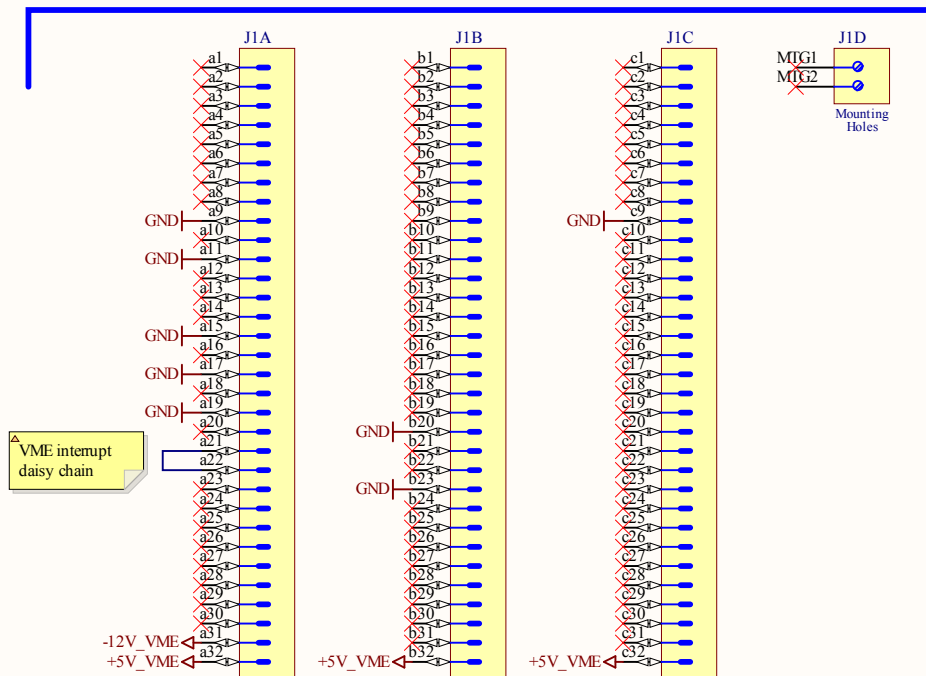
Project/Equipment		CONV TTL NIM3in 30out			
<div>Document</div> <div><div>ENICE</div><div>CERN</div></div>		<div>TTL to NIM converter 3x 1:10</div> <div>One channel</div> <div>European Organization for Nuclear Research</div> <div>CH-1211 Genève 23 - Switzerland</div> <div>EDA-XXXXX-VX-X</div>			
Document		Designer	mcatin	07/07/2010	
		Drawn by	mcatin	-	
		Check by	-	7/7/2010	
		Last Mod.	-		
		File	channel.SchDoc		
		Print Date	7/7/2010 12:07:18 PM	Sheet	2 of 5
				Size	A4
				Rev	-



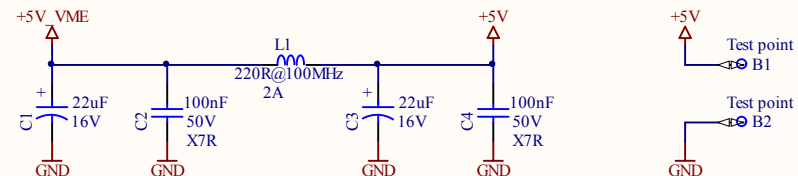
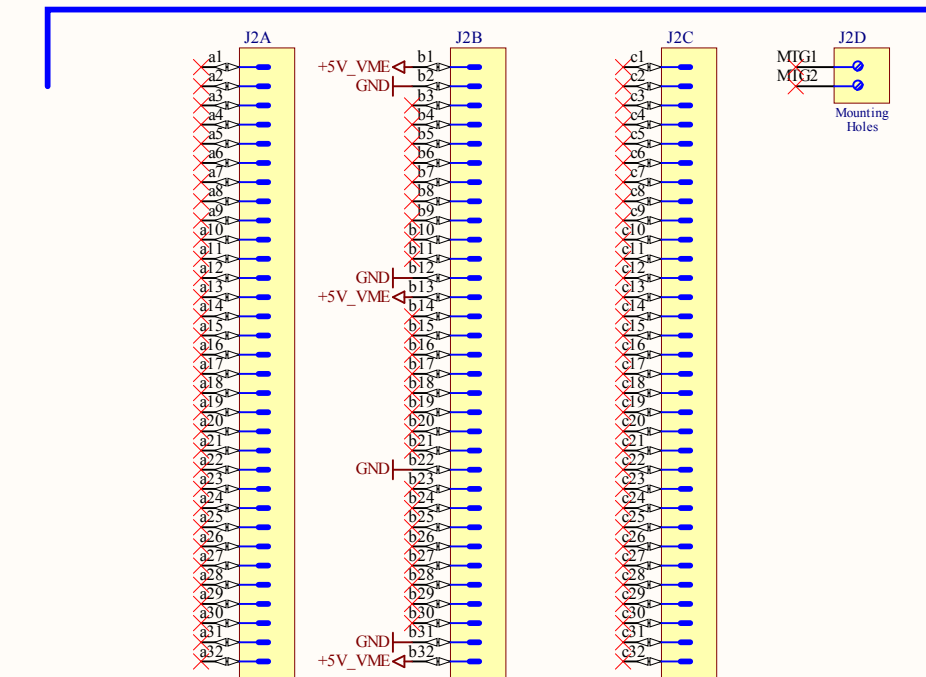


Project/Equipment		CONV TTL NIM3in 30out	
Document		Designer	mcattin
<div>ENICE</div> <div></div>	<div>TTL to NIM converter 3x 1:10</div> <div>Dual output buffer block</div>	Drawn by	mcattin
		Check by	-
		Last Mod.	-
		File	dual_output.SchDoc
		Print Date	7/7/2010 12:07:18 PM
		Sheet	4 of 5
European Organization for Nuclear Research CH-1211 Genève 23 - Switzerland		EDA-XXXXX-VX-X	
		Size	Rev
		A4	-

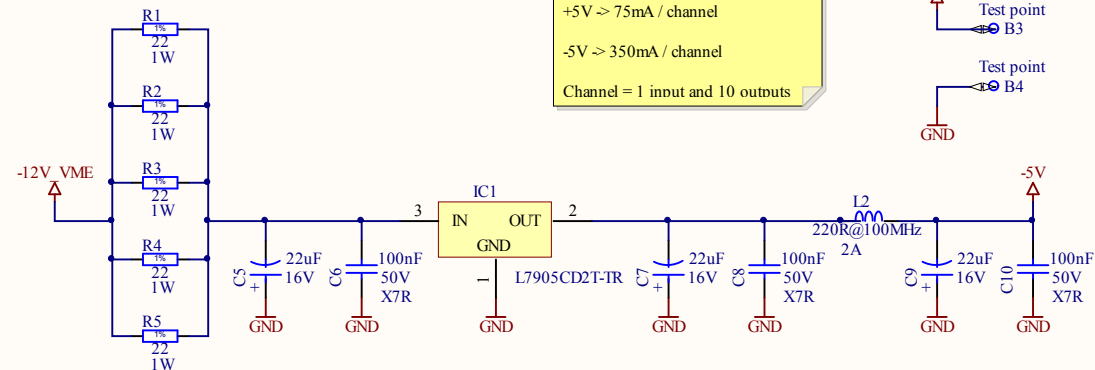
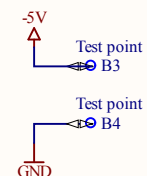
# VME P1



# VME P2



Estimated power consumption:  
+5V > 75mA / channel  
-5V > 350mA / channel  
Channel = 1 input and 10 outputs



Project/Equipment CONV TTL NIM3in 30out

Document



**TTL to NIM converter 3x 1:10**  
**Power supplies, VME connector**

European Organization for Nuclear Research  
CH-1211 Genève 23 - Switzerland

Designer	mcattin	
Drawn by	mcattin	07/07/2010
Check by	-	-
Last Mod.	-	7/7/2010
File	power_supplies.SchDoc	
Print Date	7/7/2010 12:07:19 PM	Sheet 5 of 5

EDA-XXXXX-VX-X

See Rev  
A4 -

[illegible]