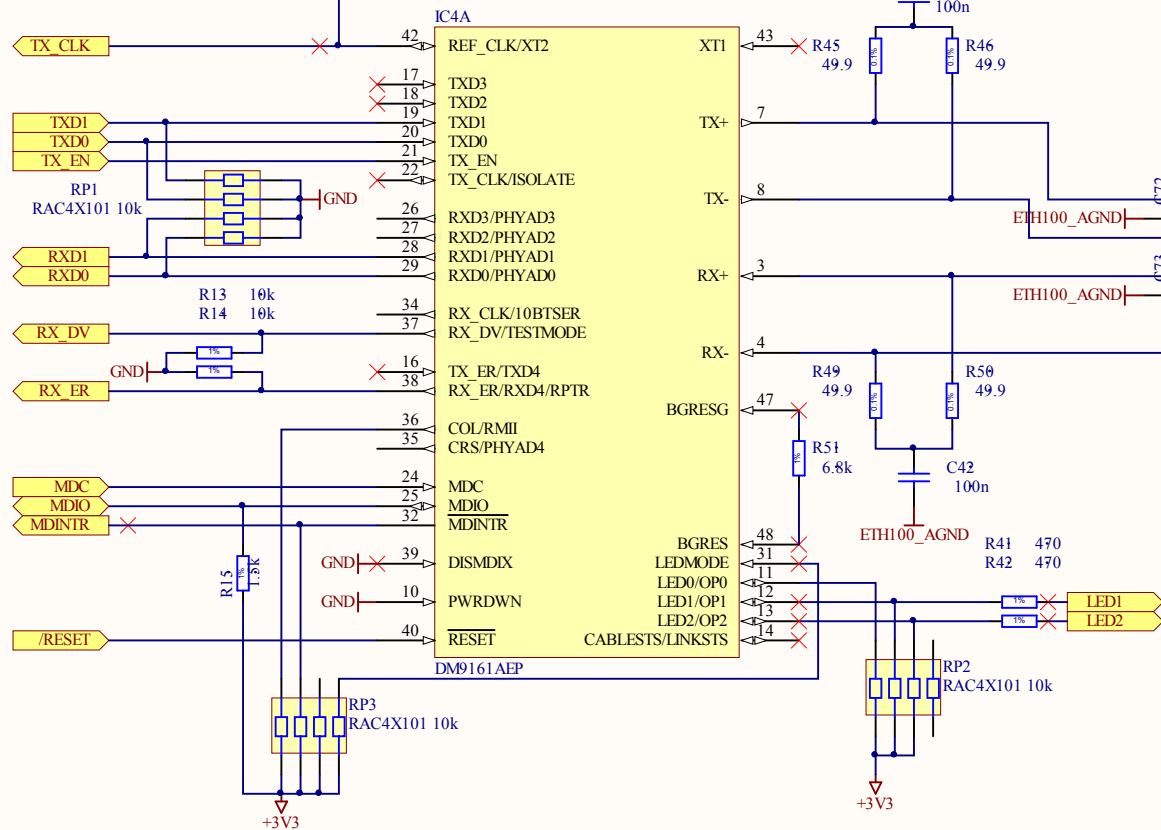
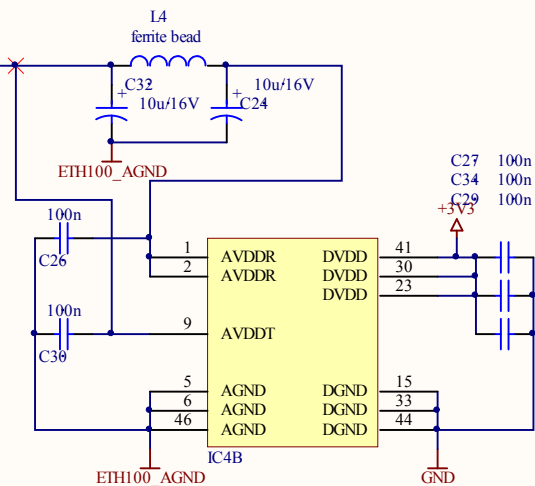
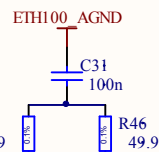
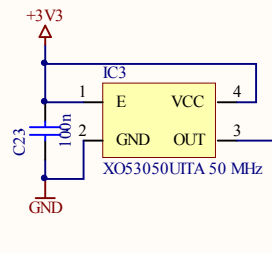
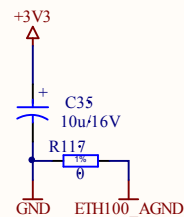
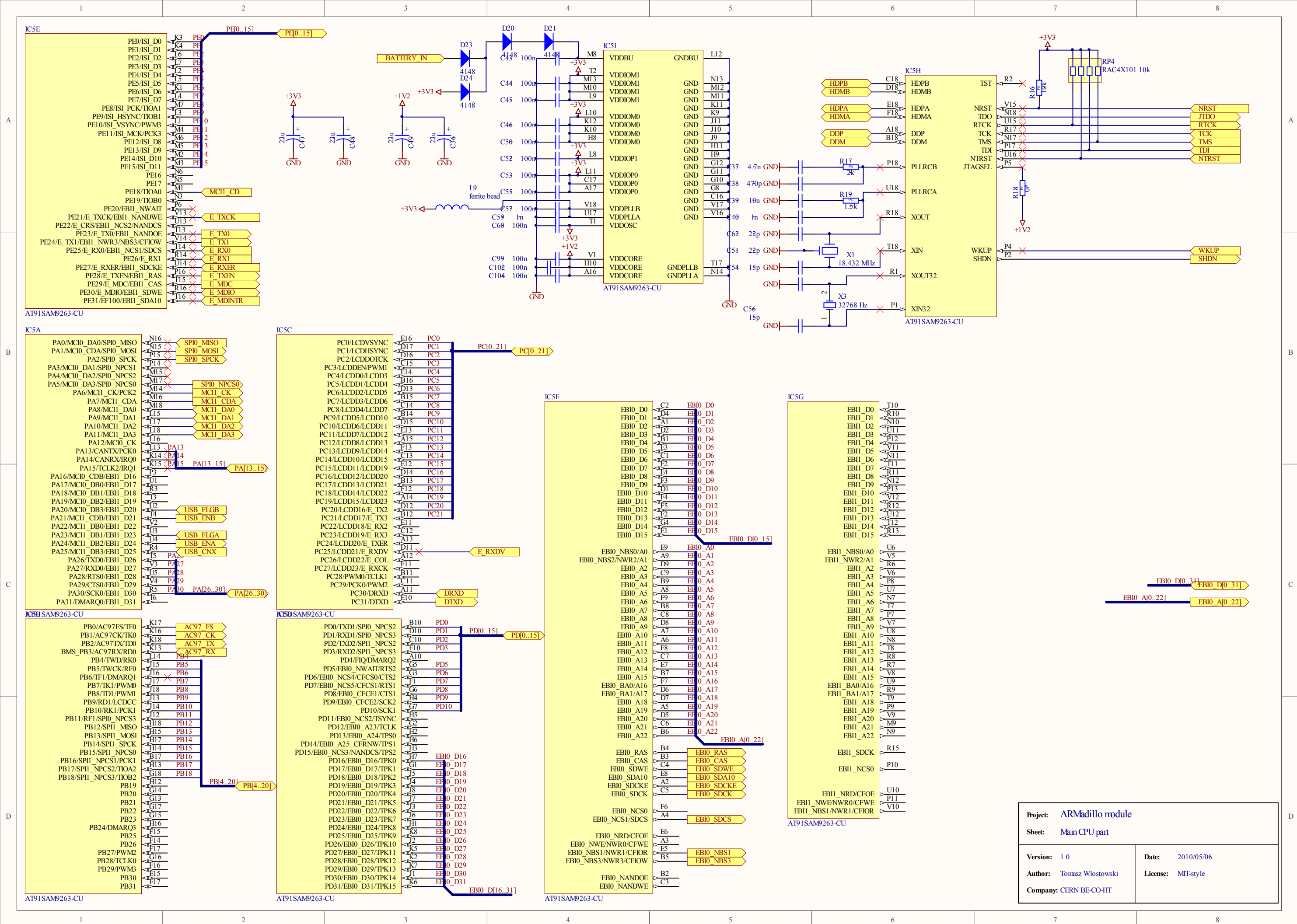




100 MBit external twisted-pair Ethernet port. Uses DM9161 PHY and RMIi interface to communicate with CPU MAC.

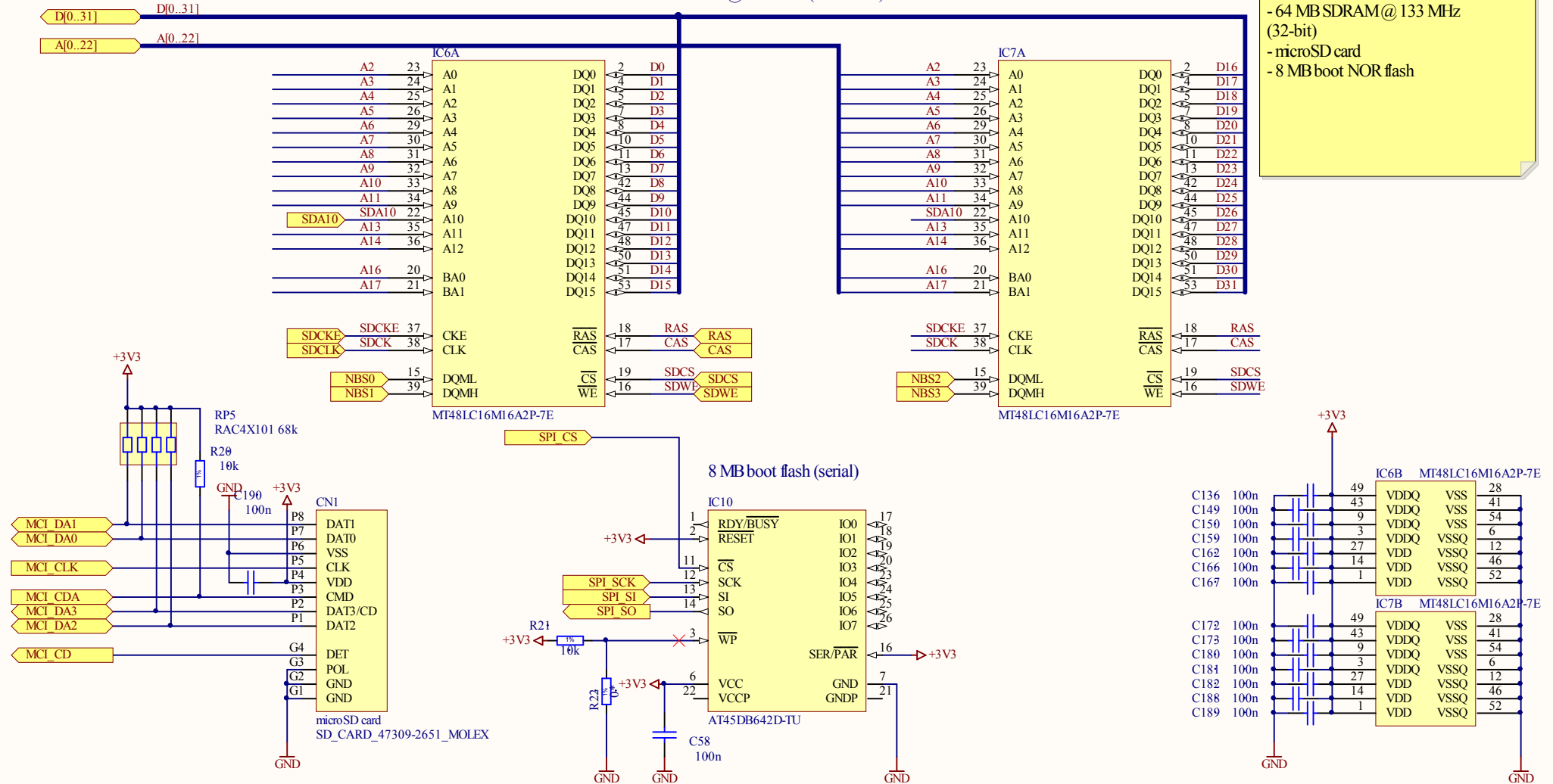


Project:	ARMadillo module
Sheet:	10/100 Mbps Ethernet PHY
Version:	1.0
Author:	Tomasz Wlostowski
Company:	CERN BE-CO-HT
Date:	2010/05/06
License:	MIT-style



64 MB SDRAM @ 133 MHz (32 bit bus)

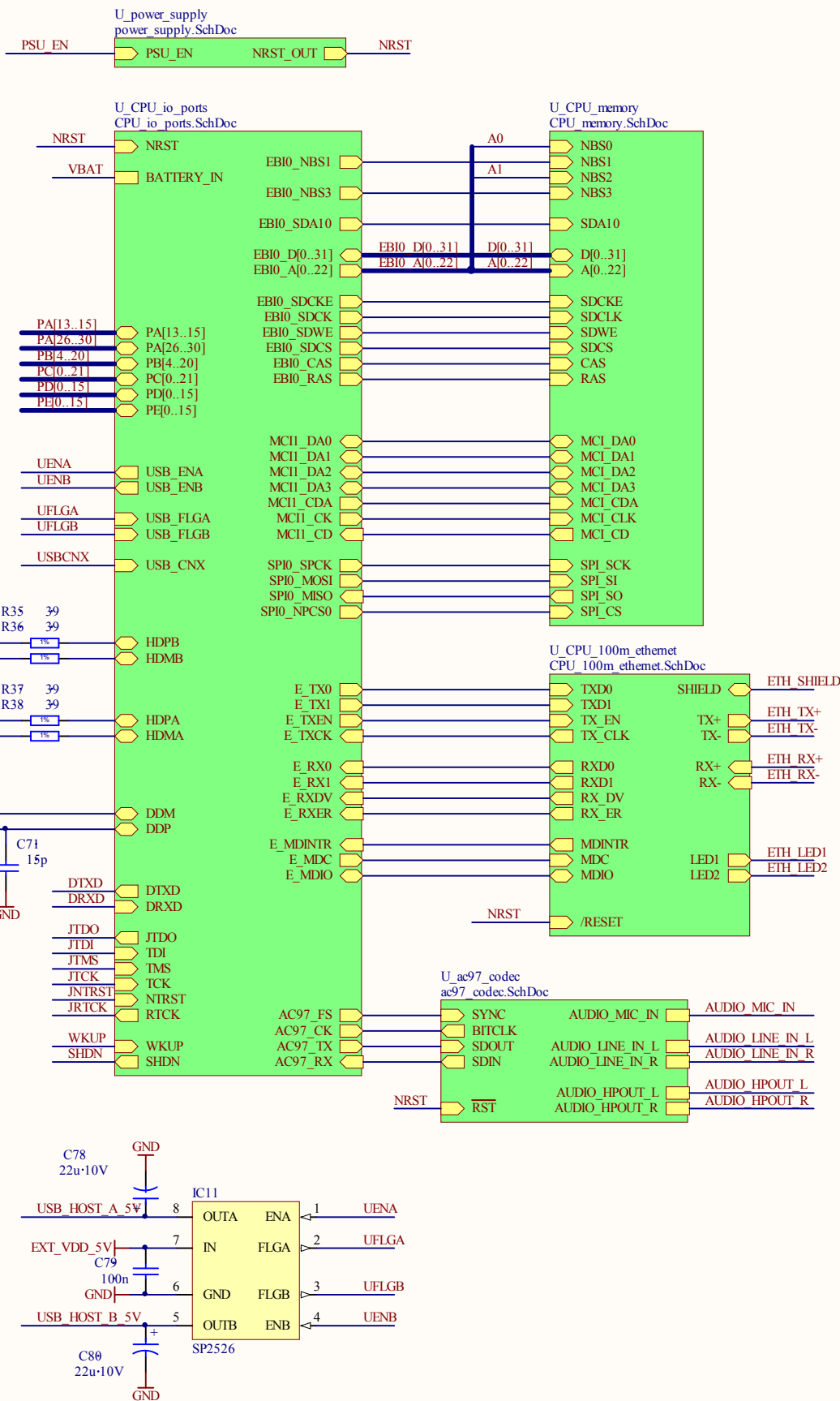
CPU memories:  
- 64 MB SDRAM @ 133 MHz (32-bit)  
- microSD card  
- 8 MB boot NOR flash



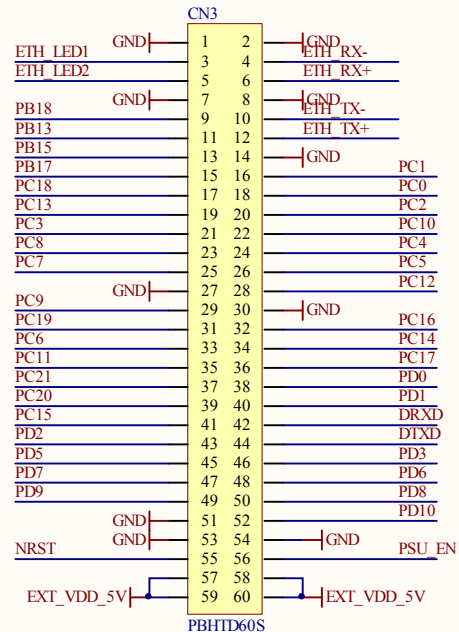
Project: ARMadillo module	
Sheet: Memories	
Version: 1.0	Date: 2010/05/06
Author: Tomasz Wlostowski	License: MIT-style
Company: CERN BE-CO-HT	

Mezzanine Connectors

All I/O pins are 3.3 V

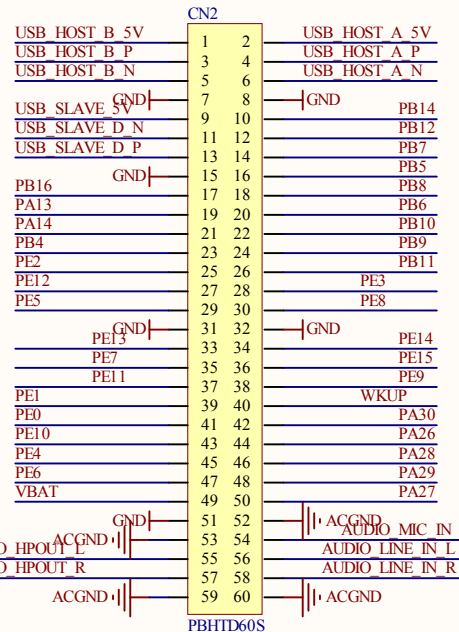


Pin Mapping	
Periph A	Periph B
GND	
Ethernet connector LED 1	
Ethernet connector LED 2	
GND	
SPI1_NPCS3	TIOB2
SPI1_MOSI	-
SPI1_NPCS0	-
SPI1_NPCS2	TIOA2
LCD_D14	LCD_D22
LCD_D9	LCD_D14
LCD_DEN	PWM1
LCD_D4	LCD_D7
LCD_D3	LCD_D6
GND	
LCD_D5	LCD_D10
LCD_D15	LCD_D23
LCD_D2	LCD_D5
LCD_D7	LCD_D12
LCD_D17	-
LCD_D16	-
LCD_D11	LCD_D19
UART2_TXD	SPI1_NPCS2
-	UART2_RTS
-	UART1_RTS
-	UART2_SCK
GND	
GND	
System reset output (active LOW)	
+5V DC INPUT	
+5V DC INPUT	

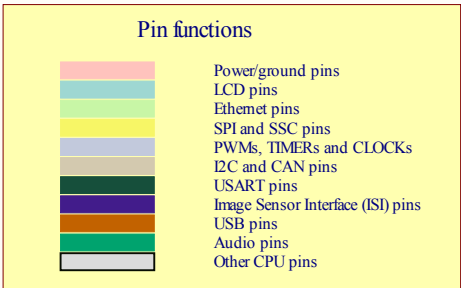


Pin Mapping	
Periph A	Periph B
GND	
Ethernet RX input -	
Ethernet RX input +	
Ethernet jack shield (GND)	
Ethernet TX output -	
Ethernet TX output +	
GND	
LCD_HSYNC	-
LCD_VSYNC	-
LCD_DOTCK	-
LCD_D6	LCD_D11
LCD_D0	LCD_D3
LCD_D1	LCD_D4
LCD_D8	LCD_D13
GND	
LCD_D12	LCD_D20
LCD_D10	LCD_D15
LCD_D13	LCD_D21
UART1_TXD	-
UART1_RXD	-
DBGU_RXD	
DBGU_TXD	
UART2_RXD	SPI1_NPCS3
-	UART2_CTS
-	UART1_CTS
-	UART1_SCK
GND	
Power supply enable (active HI, pulled up)	
+5V DC INPUT	
+5V DC INPUT	

Pin Mapping	
Periph A	Periph B
USB HOST B power output (+5V)	
USB HOST B P	
USB HOST B D+	
USB HOST B D-	
GND	
USB SLAVE power sense	
USB SLAVE D+	
USB SLAVE D-	
GND	
SPI1_NPCS1	PCK1
CAN_TX	PCK0
CAN_RX	IRQ0
I2C_SDA	-
ISI_D2	-
-	ISI_D8
ISI_D5	-
GND	
-	ISI_D9
ISI_D7	-
-	PCK3
ISI_D1	-
ISI_D0	-
ISI_VSYNC	TIOA1
ISI_D4	-
ISI_D6	-
RTC battery voltage input (+3V)	
GND	
Audio analog GND	
Headphone output left	
Headphone output right	
Audio analog GND	

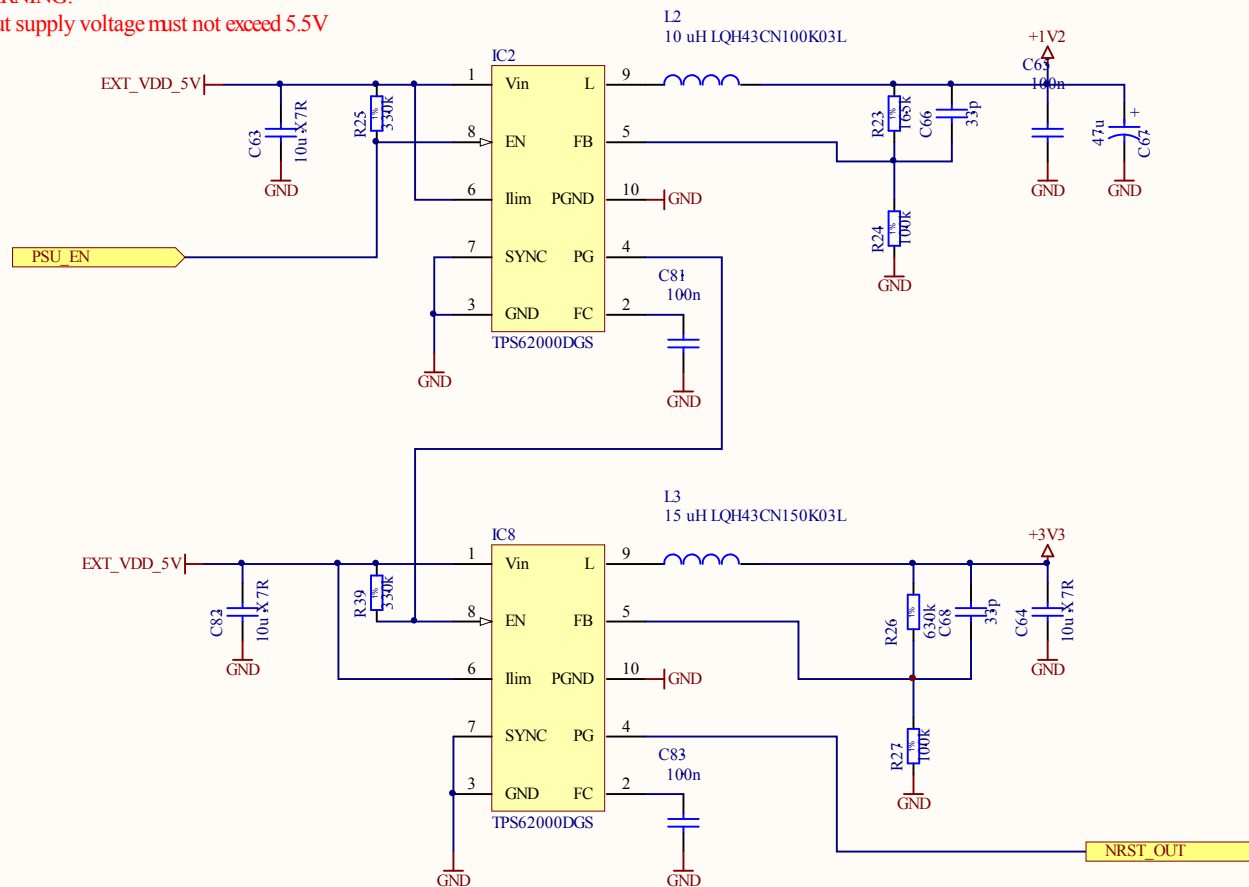


Pin Mapping	
Periph A	Periph B
USB HOST B power output (+5V)	
USB HOST B P	
USB HOST B D+	
USB HOST B D-	
GND	
SPI1_SCK	-
SPI1_MISO	-
SSC1_TK	PWM0
I2C_SCL	-
SSC1_TD	PWM1
SSC1_TF	DMARQ1
SSC1_RK	PCK1
SSC1_RD	-
SSC1_RF	-
ISI_D3	-
ISI_PCK	-
GND	
-	ISI_D10
-	ISI_D11
ISI_HSYNC	TIOB1
CPU wakeup pin	
UART0_SCK	-
UART0_TXD	-
UART0_RTS	-
UART0_CTS	-
UART0_RXD	-
Audio analog GND	
Electret microphone input	
Line input left	
Line input right	
Audio analog GND	



Project: ARMadillo module	
Sheet: Top-level diagram	
Version: 1.0	Date: 2010/05/06
Author: Tomasz Wlostowski	License: MIT-style
Company: CERN BE-CO-HT	

WARNING!  
Input supply voltage must not exceed 5.5V



Project: ARMadillo module

Sheet: Power supplies

Version: 1.0

Date: 2010/05/06

Author: Tomasz Wlostowski

License: MIT-style

Company: CERN BE-CO-HT